



DELANCEY
UK SCHOOLS
CHESS CHALLENGE

Activity Booklet
Saturday 16/01/2021



Introduction

The UKCC weekly activity booklet will be sent out every Saturday morning and contains chess puzzles and activities for a range of ability levels.

Players are encouraged to at least try and complete the page most relevant to their ability level (see table below). However you are welcome to tackle the entire booklet! At the end of the booklet there are some more general puzzles / activities for everyone to enjoy

Solutions

Solutions will be posted alongside the following weeks activity booklet and there will also be a video solution guide.

Please email us any feedback or ideas for future puzzles!

Ability Levels

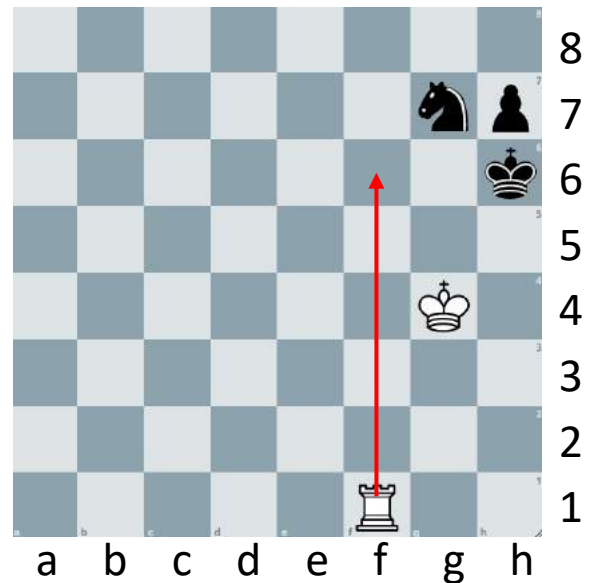
Club	Description	Approximate ECF Grade *
DECA – Club	Complete beginners and those with an incomplete grasp of the rules	Ungraded
MEGA – Club	Know the rules but little grasp of planning what to do beyond capturing and quick checkmates. Little to no tournament experience	0 – 59
GIGA – Club	Players with some tournament experience looking to “level up”	60 – 99
TERA – Club	More experienced players who have won or placed highly in local competitions	100 – 129
EXA - Club	Very experienced players with success at National Level events	130 – 159

Example

Below are examples of how you might write your solution to a puzzle presented in the booklet. Or you might prefer to just solve them in your head – completely up to you!

Q: Can you find checkmate in one for white?

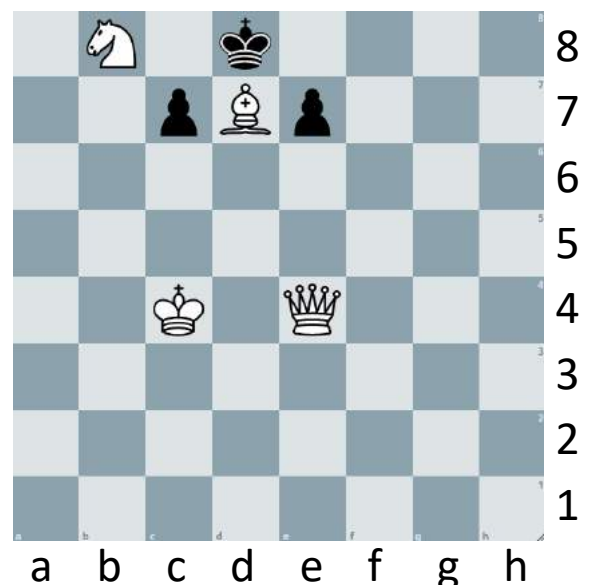
Here, because the solution is only one move, you might draw arrows on the board or you can use the lines below to answer – or both!



Rf6#
.....
.....

Q: Can you find checkmate in two for white?

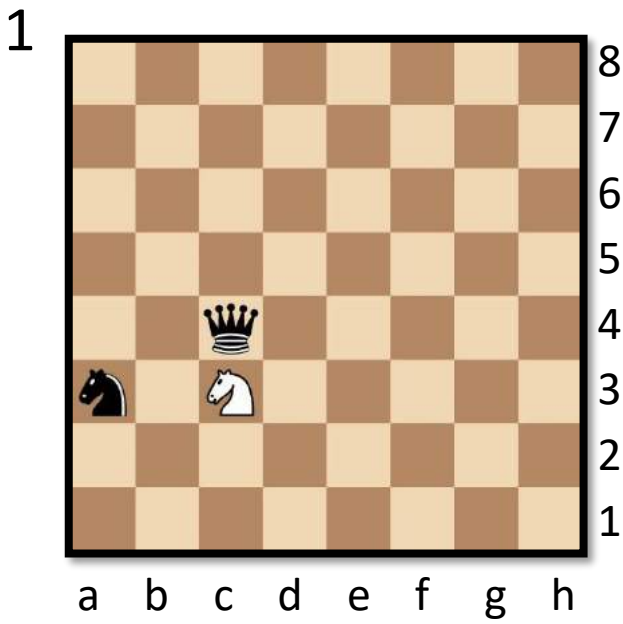
Here, the solution is a bit (OK a lot!) trickier and requires consideration of multiple variations. If you are familiar with coordinates, it is probably best that you write your answer out as shown.



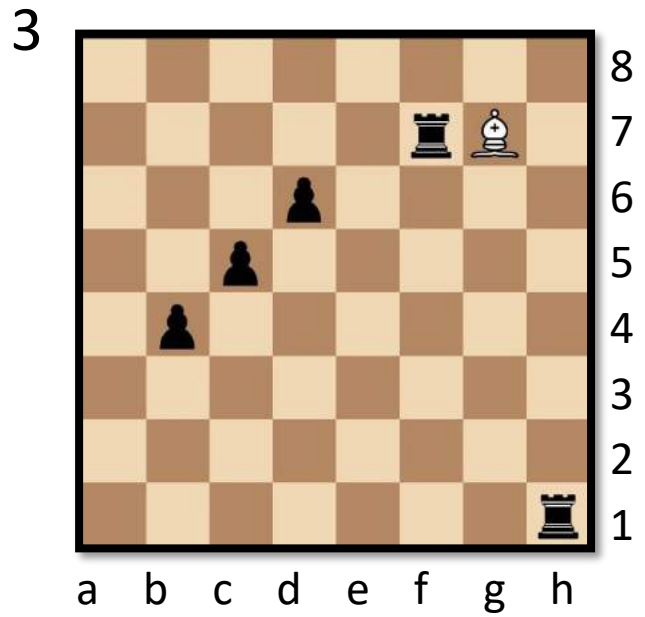
1.Qe1 e6 (1..c6 2.Qa5#) 2. Qh4#
.....
.....

Deca

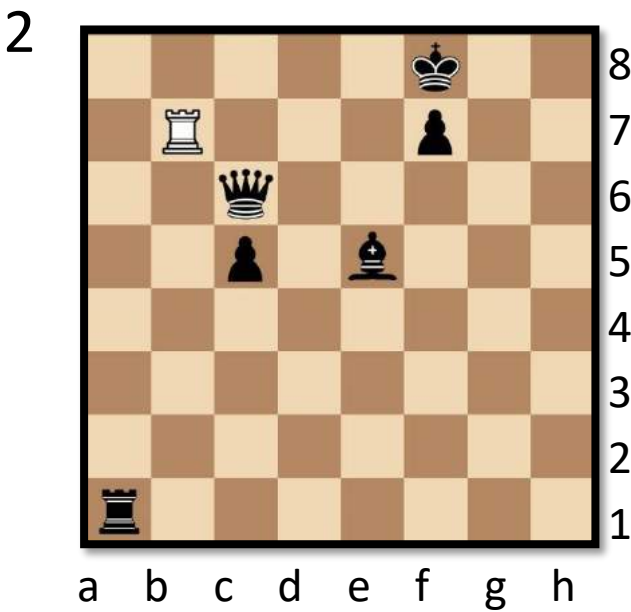
In the positions below a white piece is attacked. There is only one safe square to escape to – can you find it?



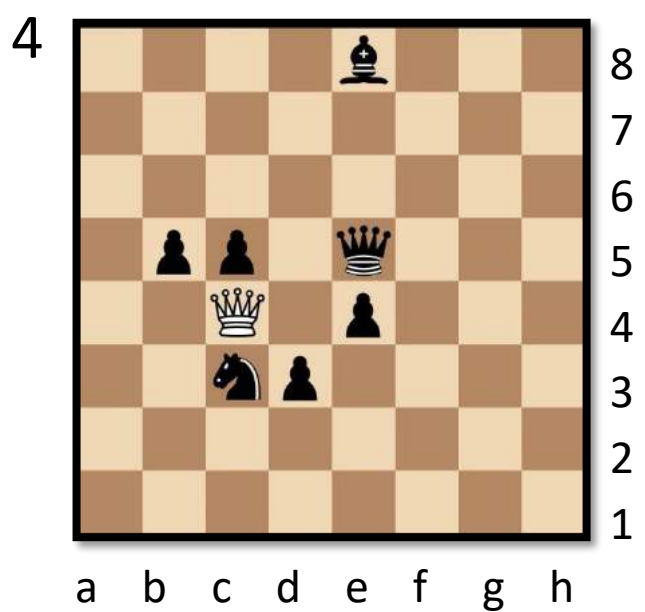
.....
.....



.....
.....



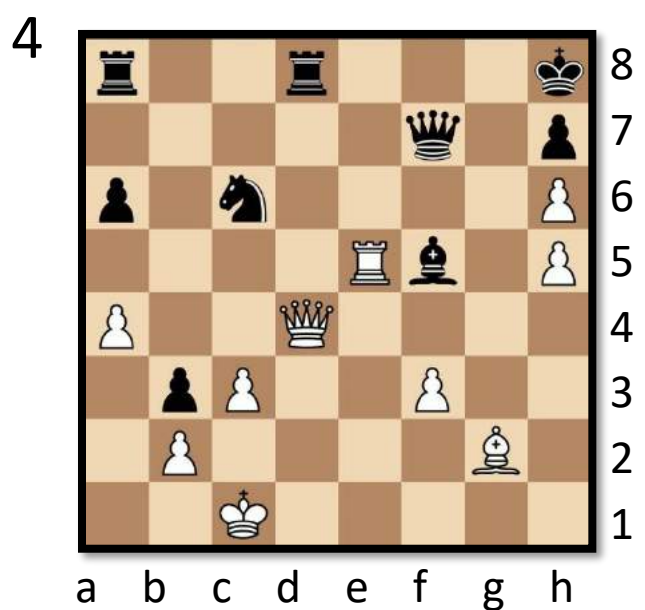
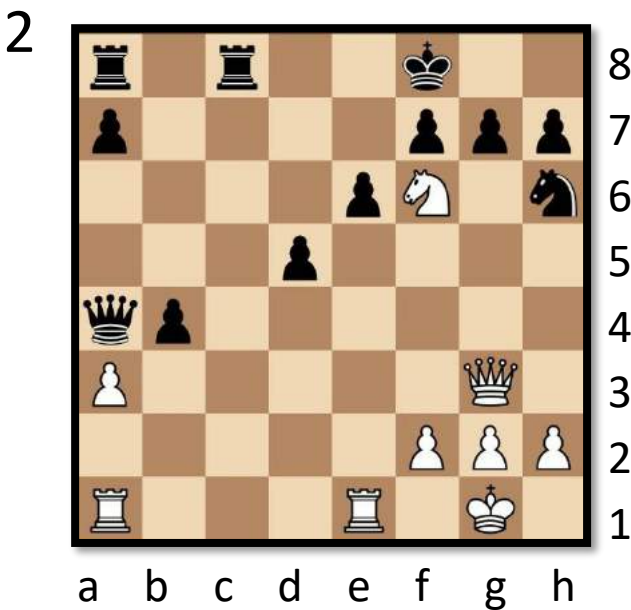
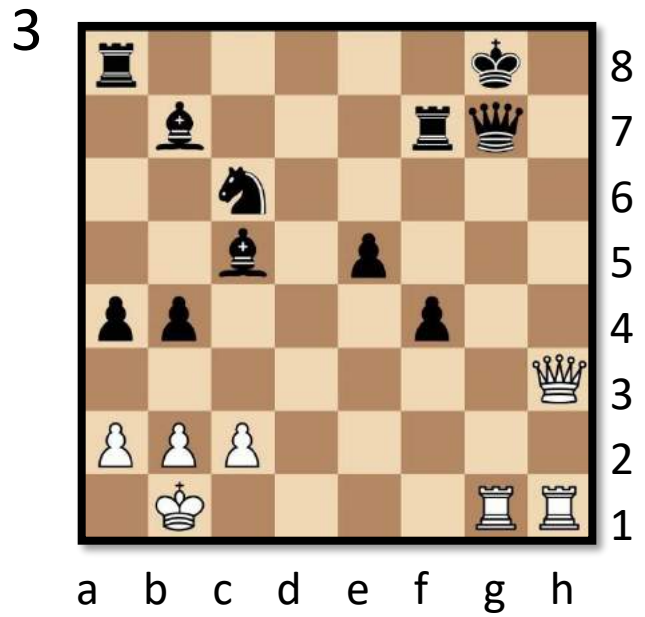
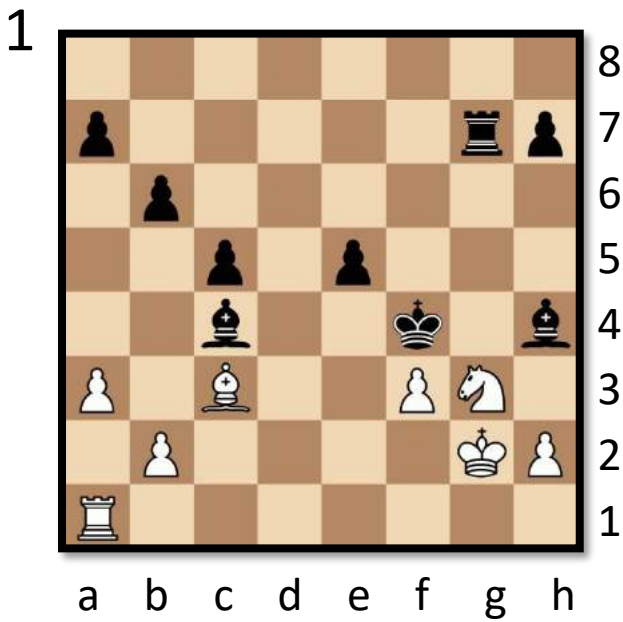
.....
.....



.....
.....

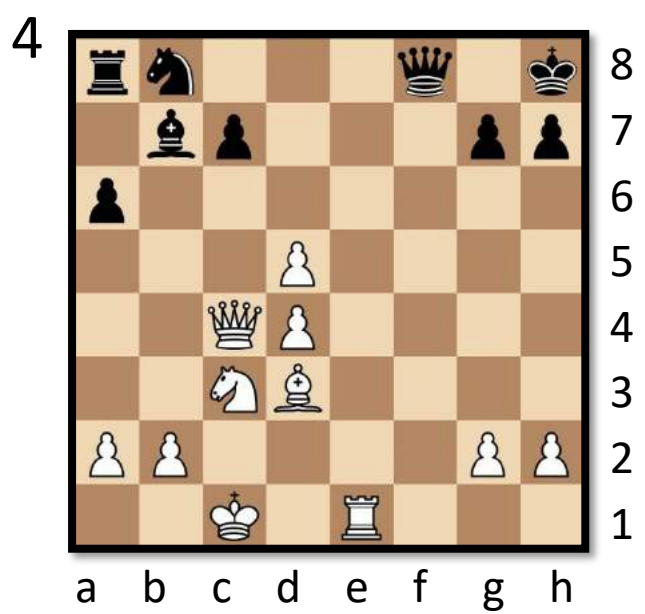
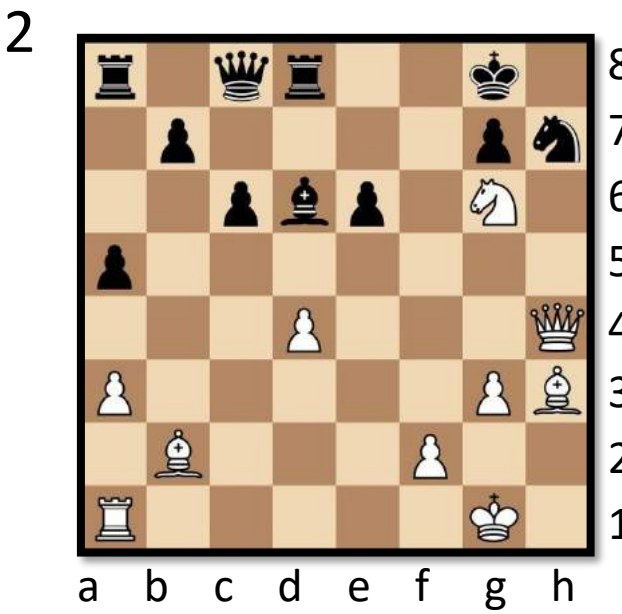
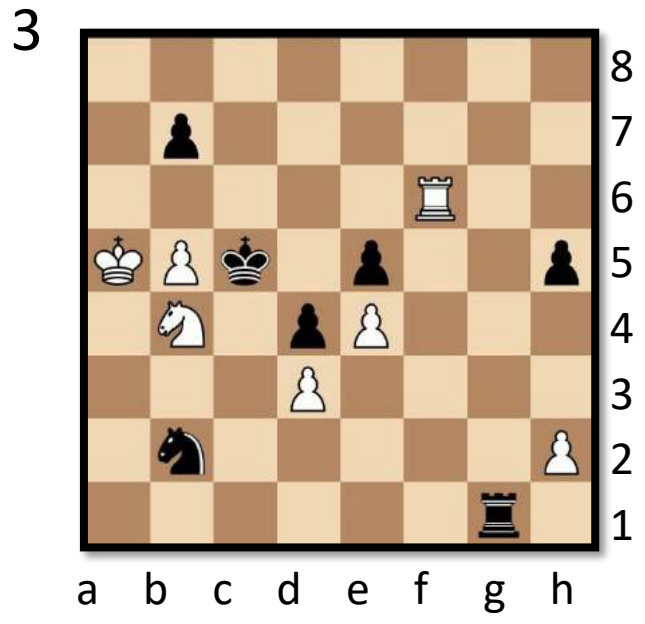
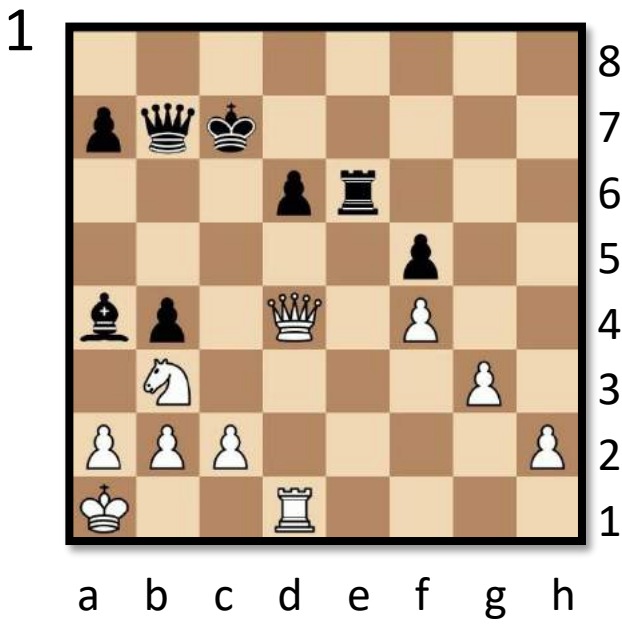
Mega

White to play and checkmate in one move! Look out for pins and double checks...



Giga

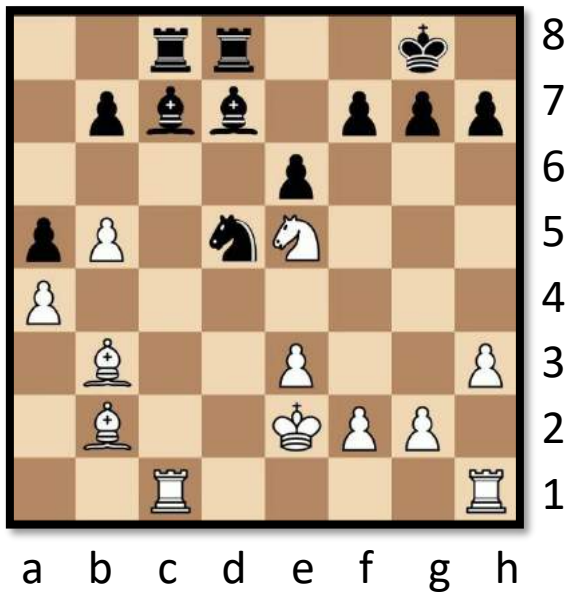
In each diagram it is white to move. There is either forced mate or a forced way to win material.



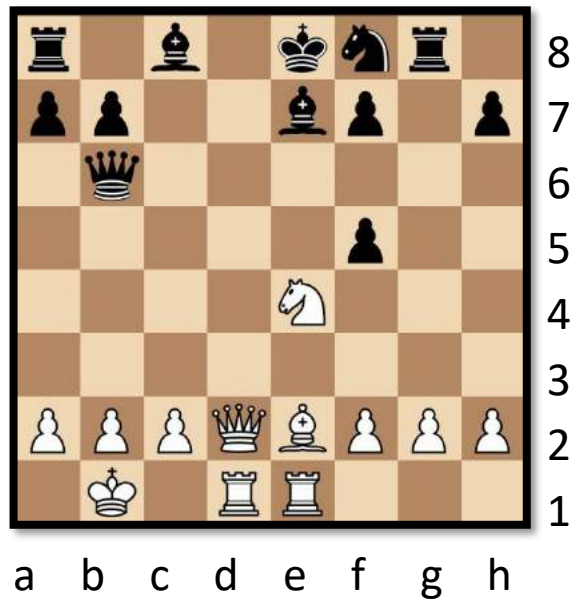
Tera

In each diagram it is white to play and either win material or force checkmate.

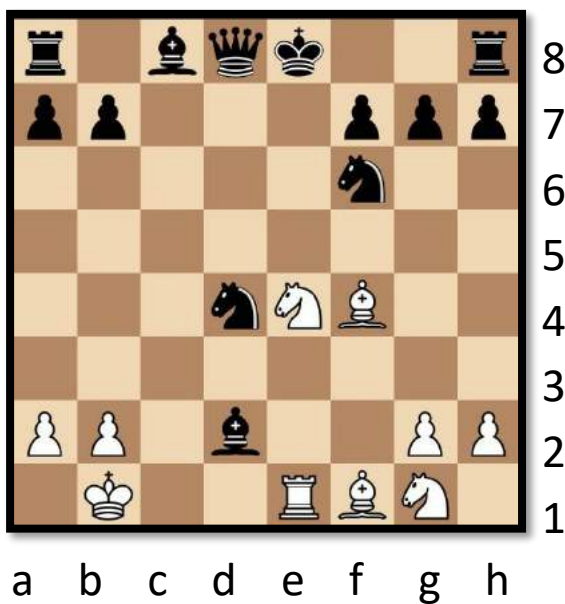
1



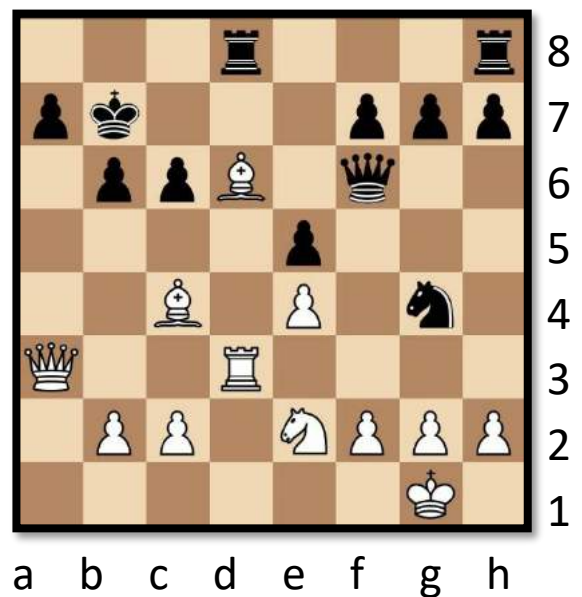
3



2

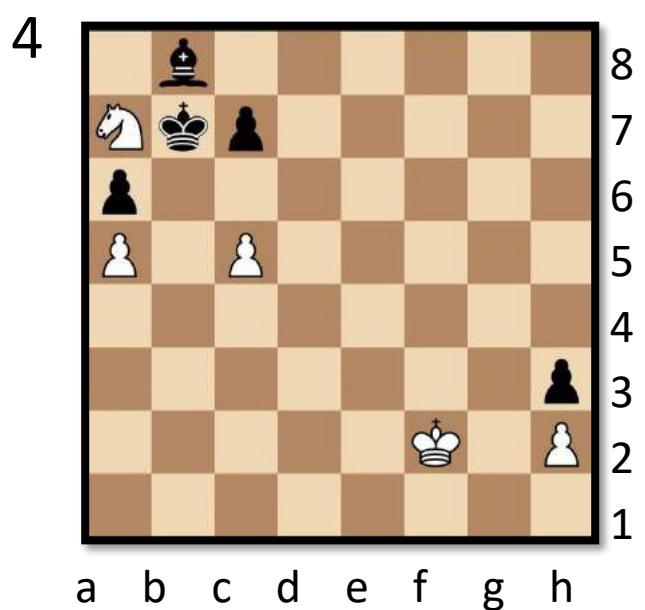
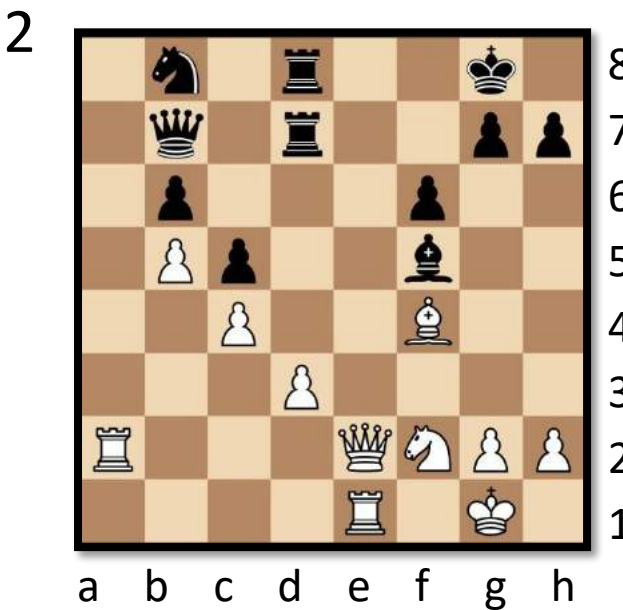
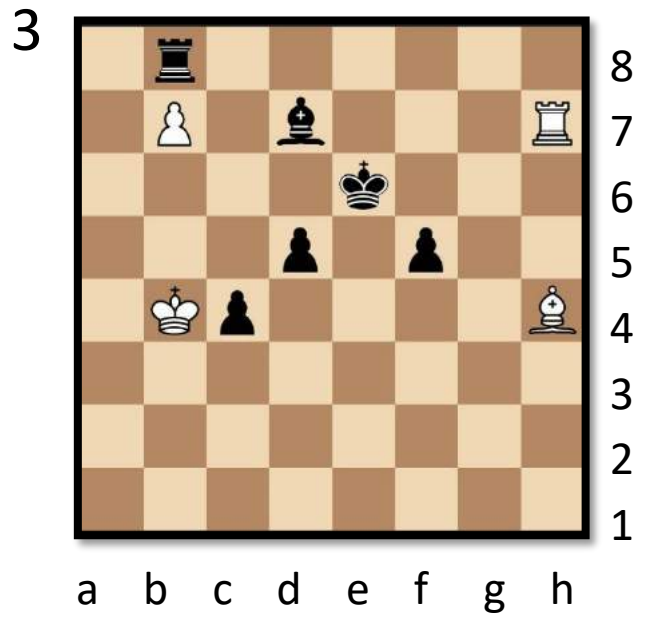
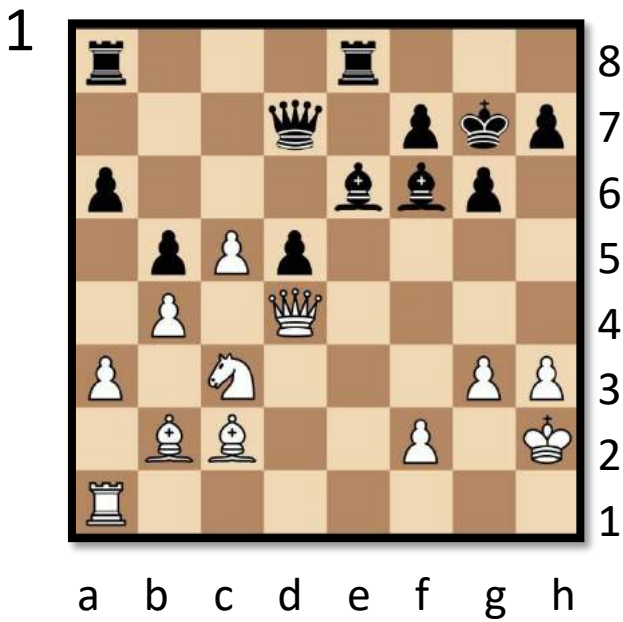


4



Exa

In each diagram it is white to move. In the first three diagrams white can either win material or checkmate the opponent. In diagram 4 white needs to find a clever way to draw.

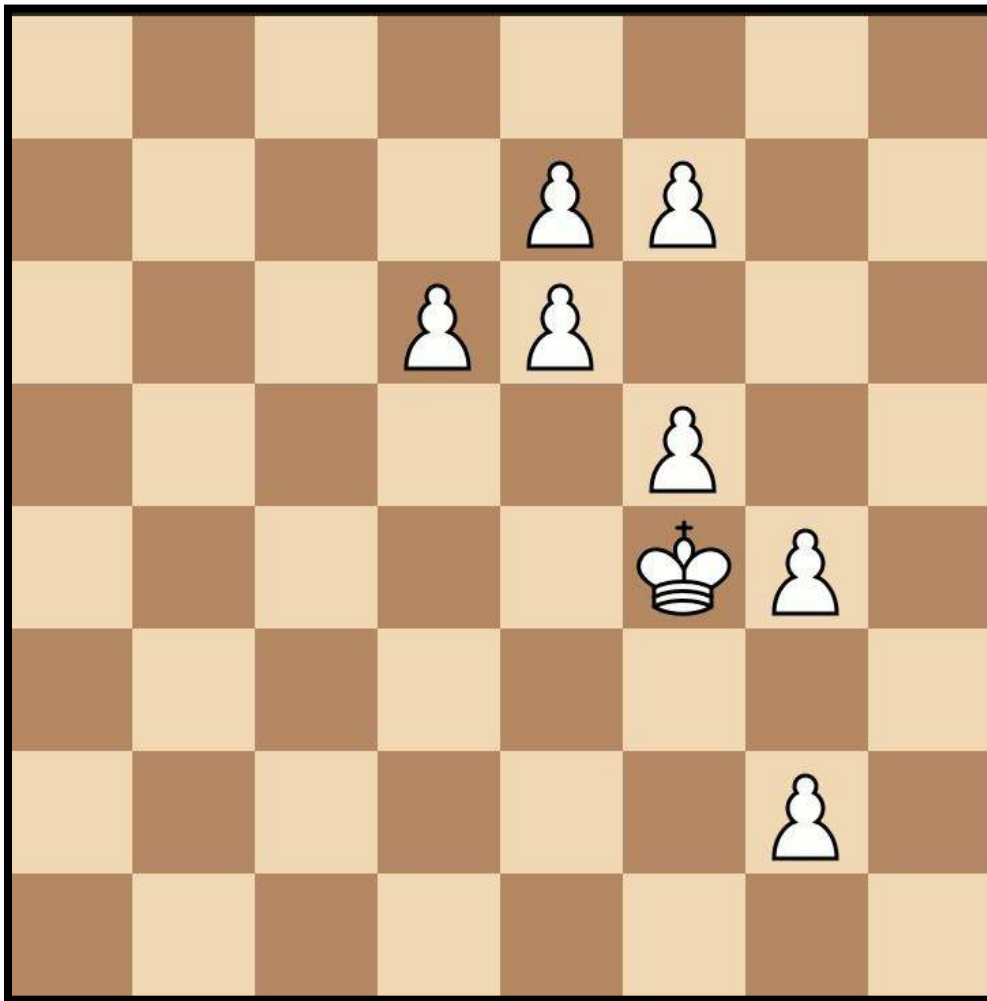


Fun Puzzles

Over the next couple of pages you will find some more casual puzzles with a range of difficulty levels!



Triple Loyd - Medium

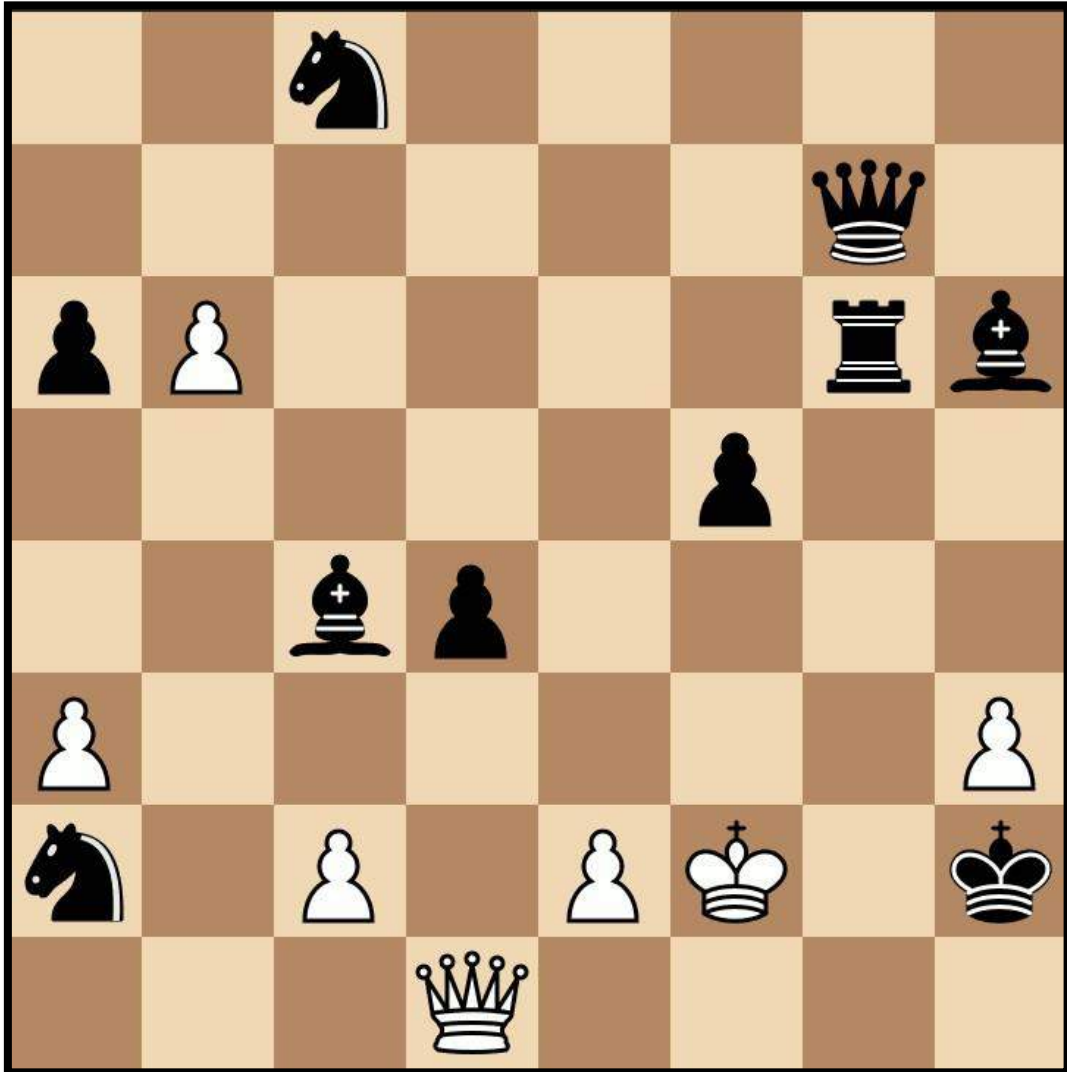


In a “Triple Loyd” puzzle you will notice the black king is missing from the board. You have to place the black king in 3 different positions (though sometimes the same square may be used twice)!

- 1) In the first position the black king is in checkmate
- 2) In the second position the black king is in stalemate
- 3) In the third position white can deliver checkmate in one move (and write down this move)!

Queen Maze

Difficulty: Hard

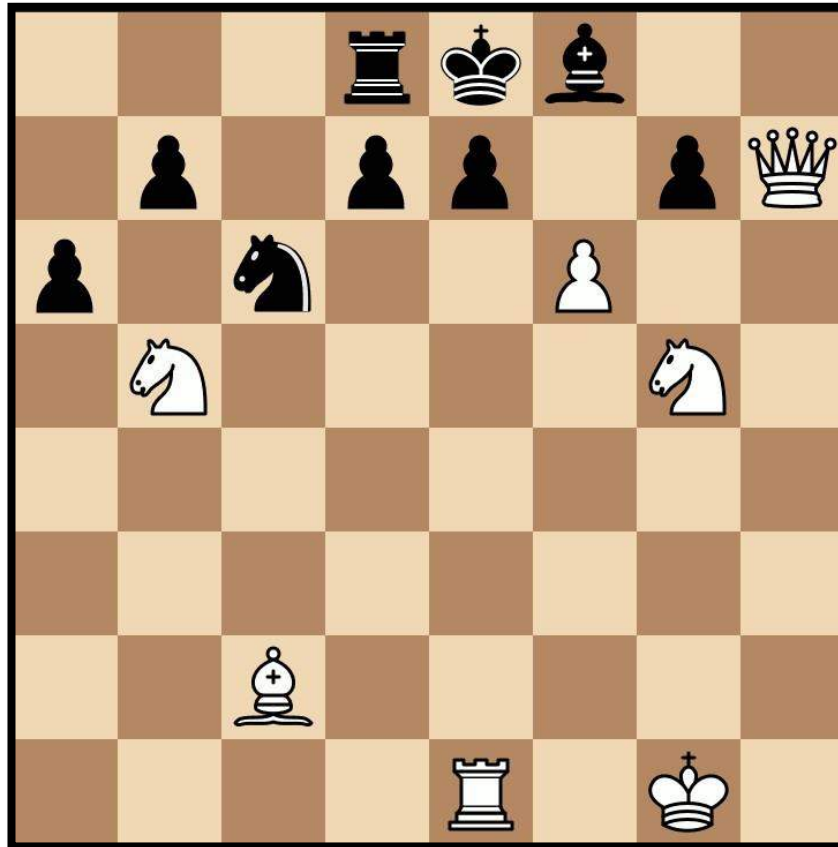


In this queen maze white has to move the queen consecutively until it captures the black king. It is not allowed to capture any black pieces and cannot move to squares that are attacked by black pieces. **The queen can capture the king in 11 moves** – can you find your way through the maze?

How Many Mates?

PUZZLE
OF THE
WEEK

Difficulty: Medium



White to play – how many checkmates can you find?

Submit your solution for a chance to win a prize!

Submit your answer via the form below:

<https://airtable.com/shrVsrBdsSWPRRDVK>

Correct answers will have a shot of winning a prize! Previous prizes include merchandise and invitations to master challenge matches

Take a look at...



Spring Club

Online Spring Chess Clubs

From January 2021 the UK Chess Challenge are continuing CLUB – a family membership where players get access to weekly online competitions and lessons which are banded into five ability levels. There are three membership types so you can choose the features and budget that is right for you. The start date is the 11th January.

We are passionate about giving children the opportunity to “Learn, Practice and Play” and our clubs have all three of these elements in abundance mixed in of course with that vital ingredient – fun!



Check out our weekly Zoom lessons with WFM Sarah Longson on our website using the link below! We run classes every weekday for each ability level as well as tournaments weekdays and weekends!

<https://www.delanceyukschoolschesschallenge.com/spring-term>

If you enjoyed solving the tactics puzzles today you might enjoy WFM Sarah Longson and GM Danny King’s Chessable course on **Endgames!**

You can find out more online or using the link below.

<https://www.chessable.com/tournament-ready-the-endgame/course/33413/>

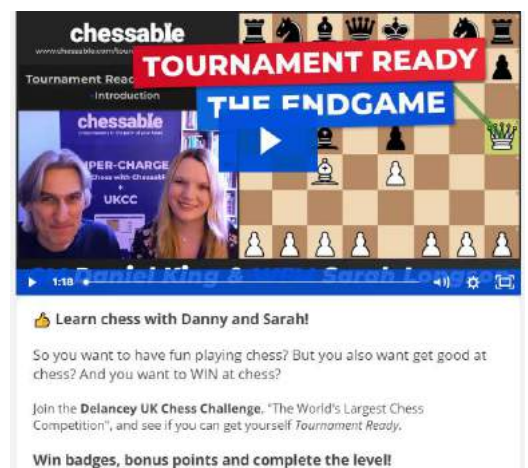
Contact Us

Any questions, comments or ideas about anything chess related we’d love to hear from you!

Email: admin@ukchess.co.uk

Phone: 0161 485 1729

Facebook: <https://www.facebook.com/DelanceyUKSchoolsChessChallenge/>



chessable

TOURNAMENT READY

THE ENDGAME

Learn chess with Danny and Sarah!

So you want to have fun playing chess? But you also want get good at chess? And you want to WIN at chess?

Join the **Delancey UK Chess Challenge**. "The World's Largest Chess Competition", and see if you can get yourself *Tournament Ready*.

Win badges, bonus points and complete the level!

Hint to mate in 6: The first move is 1.Rh1 and the last move is 6.Ba3-b2 checkmate...