



DELANCEY  
UK SCHOOLS  
CHESS CHALLENGE

**Activity Booklet**  
Saturday 20/02/2021



# Introduction

The UKCC weekly activity booklet will be sent out every Saturday morning and contains chess puzzles and activities for a range of ability levels.

Players are encouraged to at least try and complete the page most relevant to their ability level (see table below). However you are welcome to tackle the entire booklet! At the end of the booklet there are some more general puzzles / activities for everyone to enjoy

## Solutions

Solutions will be posted alongside the following weeks activity booklet and there will also be a video solution guide.

Please email us any feedback or ideas for future puzzles!

## Ability Levels

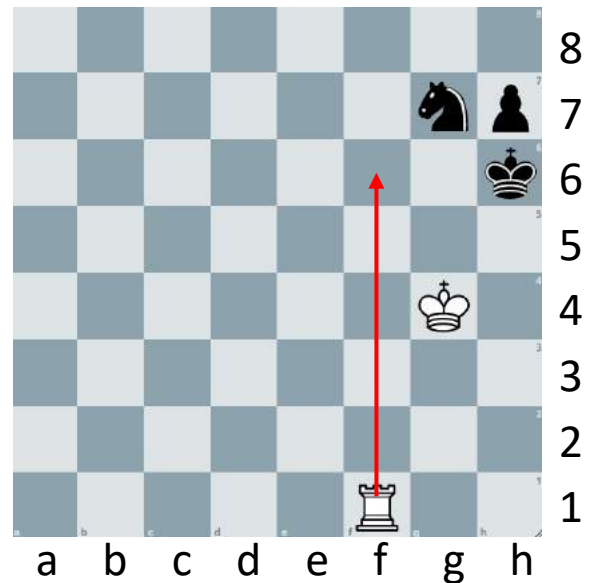
Club	Description	Approximate ECF Grade *
DECA – Club	Complete beginners and those with an incomplete grasp of the rules	Ungraded
MEGA – Club	Know the rules but little grasp of planning what to do beyond capturing and quick checkmates. Little to no tournament experience	0 – 59
GIGA – Club	Players with some tournament experience looking to “level up”	60 – 99
TERA – Club	More experienced players who have won or placed highly in local competitions	100 – 129
EXA - Club	Very experienced players with success at National Level events	130 – 159

# Example

Below are examples of how you might write your solution to a puzzle presented in the booklet. Or you might prefer to just solve them in your head – completely up to you!

**Q: Can you find checkmate in one for white?**

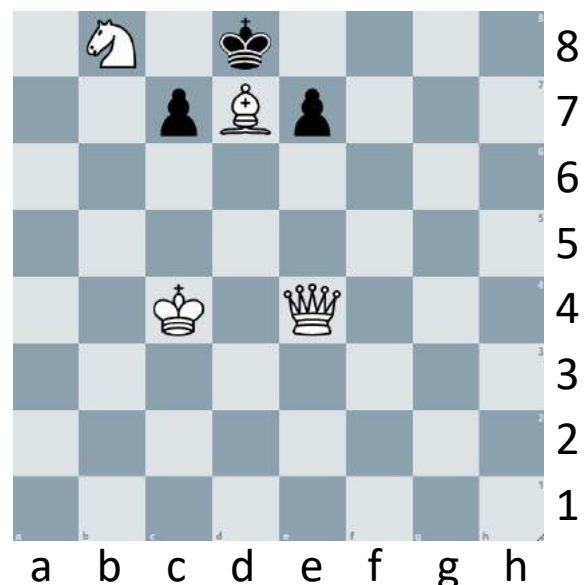
Here, because the solution is only one move, you might draw arrows on the board or you can use the lines below to answer – or both!



Rf6#  
.....  
.....

**Q: Can you find checkmate in two for white?**

Here, the solution is a bit (OK a lot!) trickier and requires consideration of multiple variations. If you are familiar with coordinates, it is probably best that you write your answer out as shown.

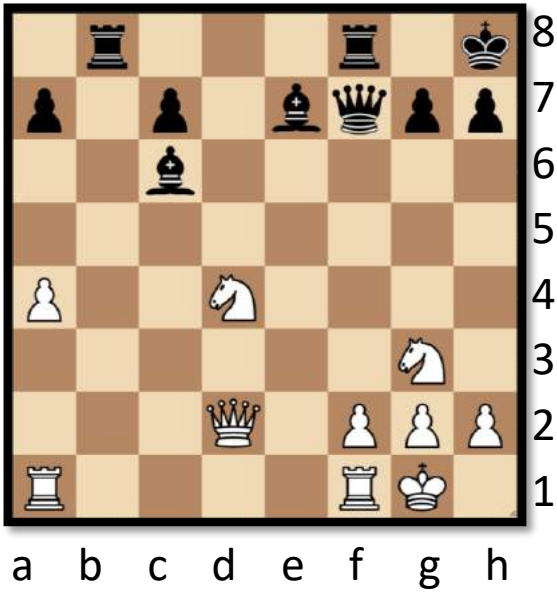


1.Qe1 e6 (1..c6 2.Qa5#) 2. Qh4#  
.....  
.....

# Deca

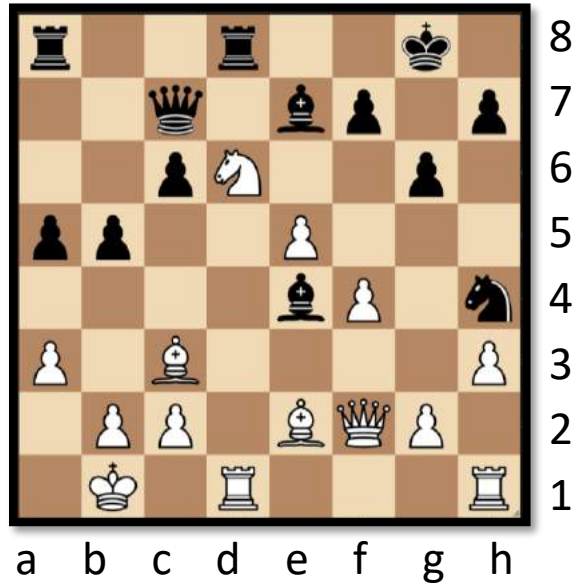
White to play and capture an unprotected piece.

1



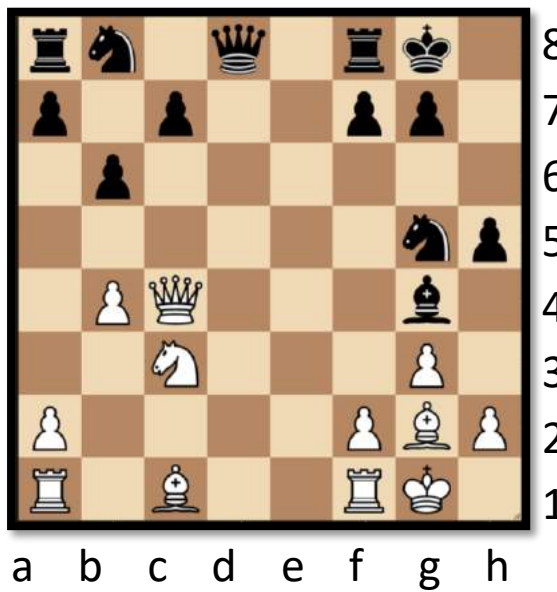
.....  
.....

3



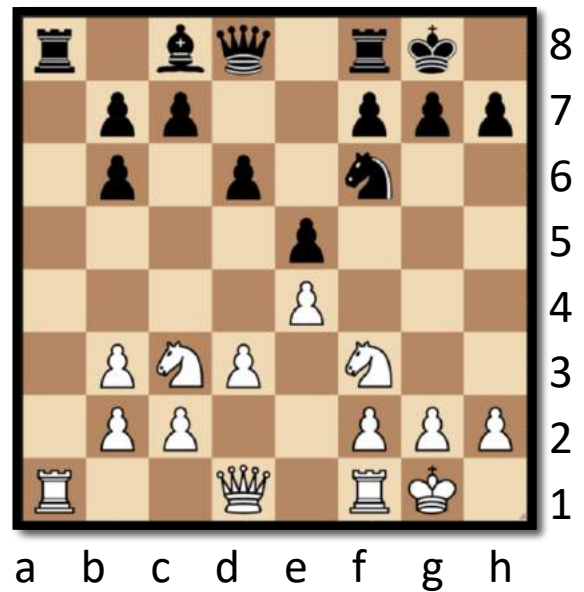
.....  
.....

2



.....  
.....

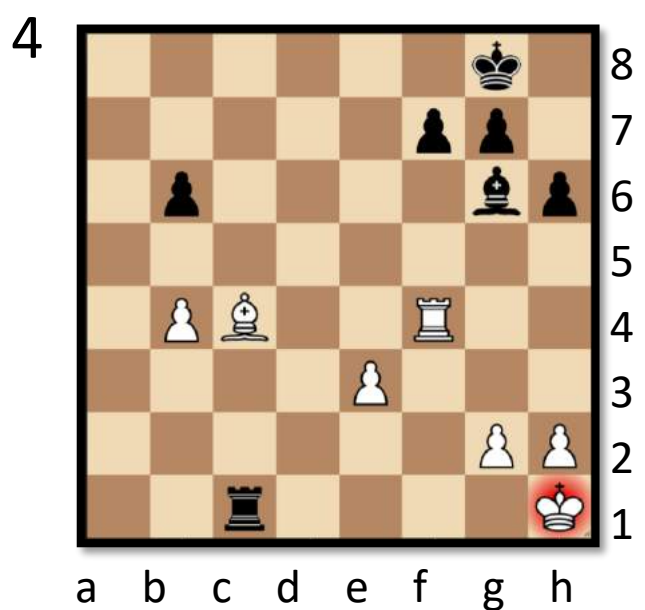
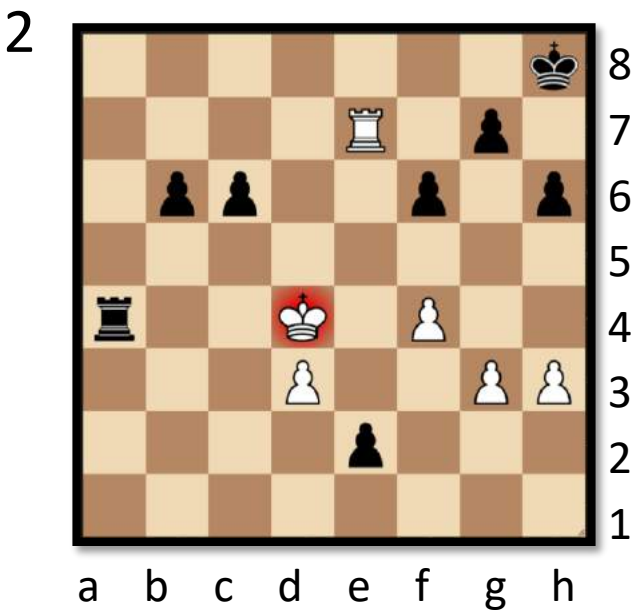
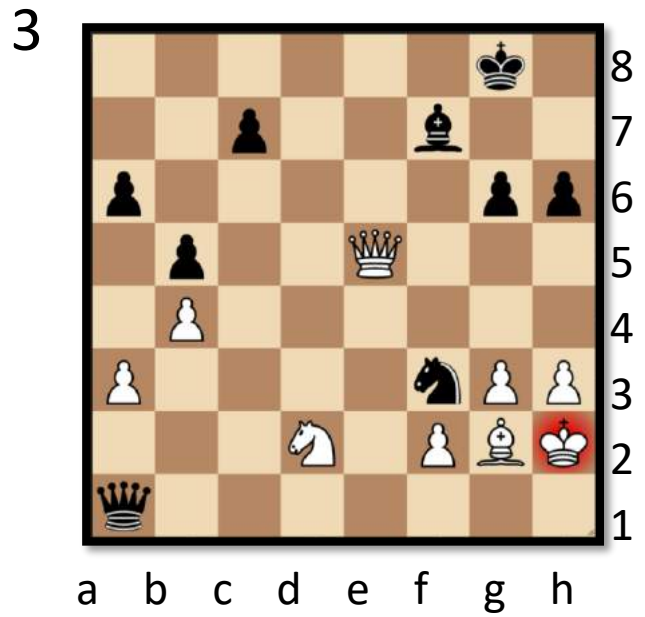
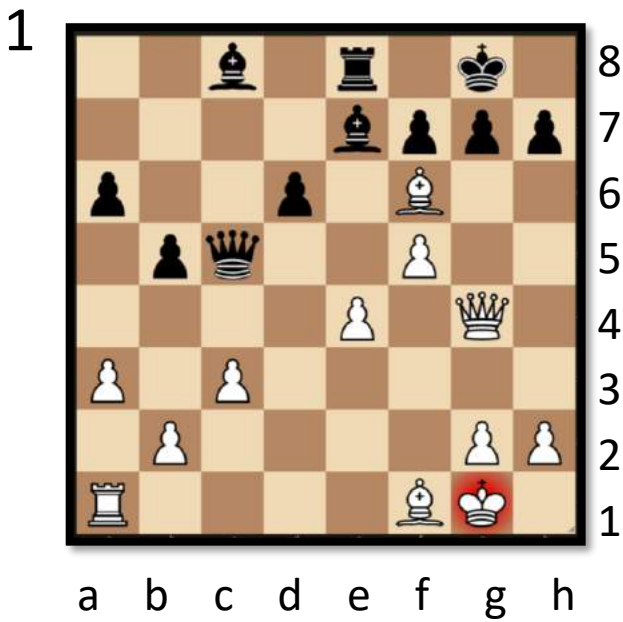
4



.....  
.....

# Mega

In the following positions the white king is in check – find the BEST way to escape the check.

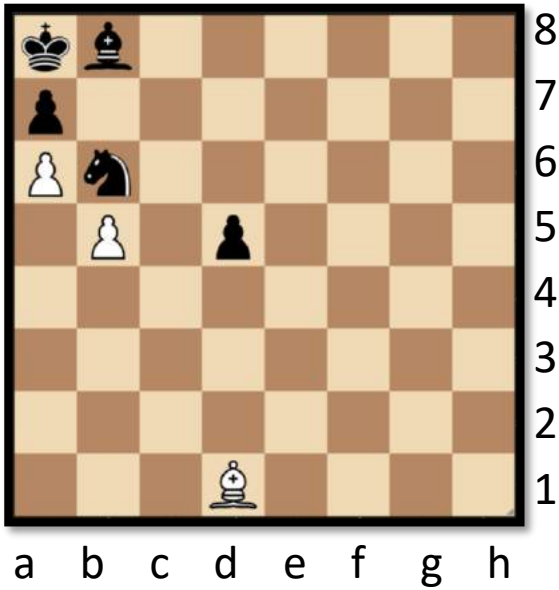


# Giga

White needs to make three consecutive moves to place black in checkmate.

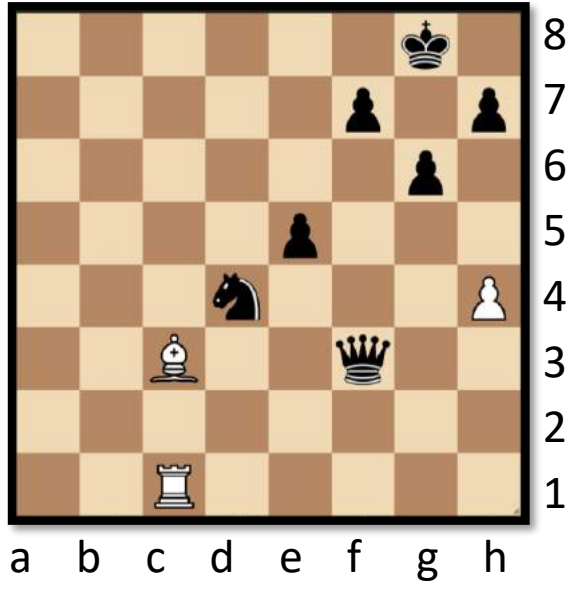
White may not capture a piece, move to an unprotected square and can only deliver a check on the final move.

1



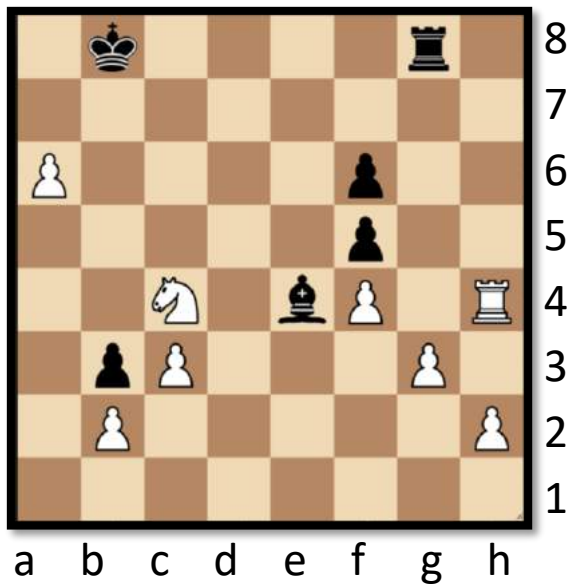
.....  
 .....

3



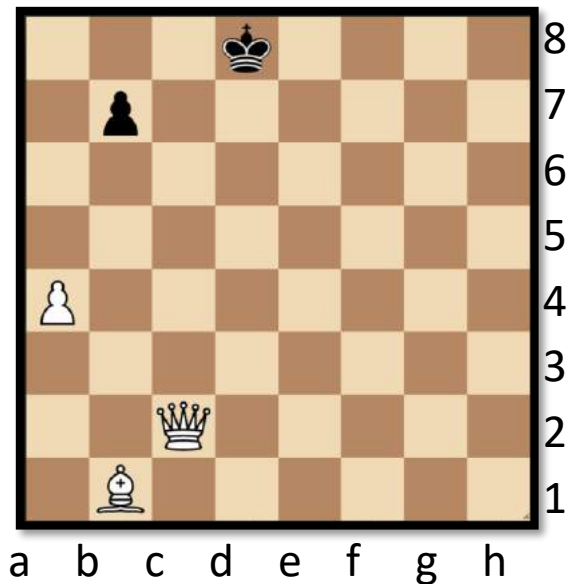
.....  
 .....

2



.....  
 .....

4

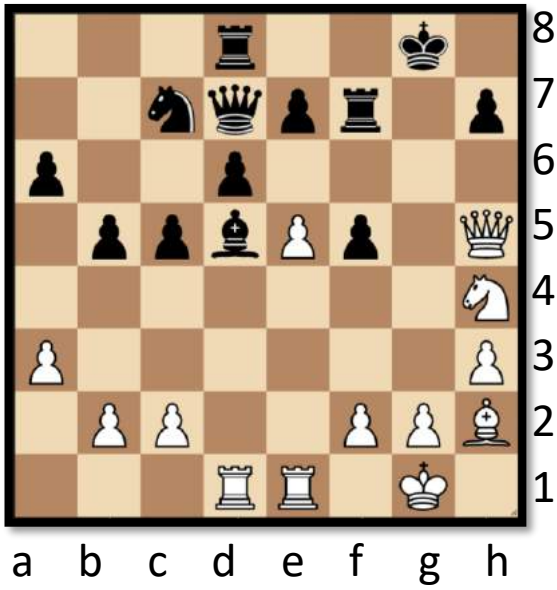


.....  
 .....

# Tera

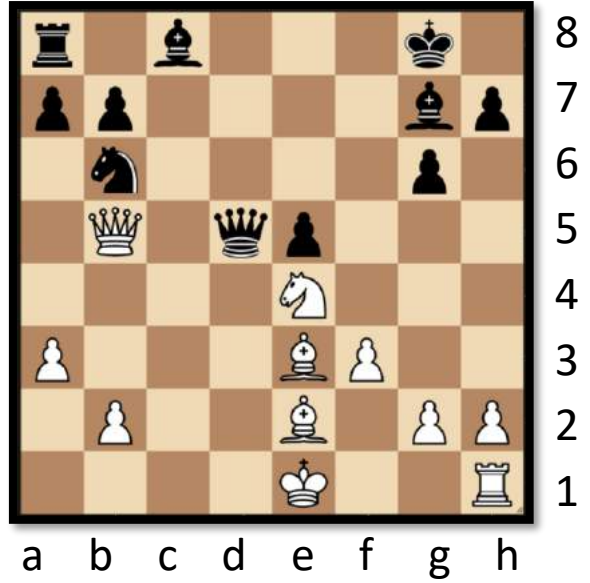
White to play and win material. The main theme here is 'removing the defender'.

1



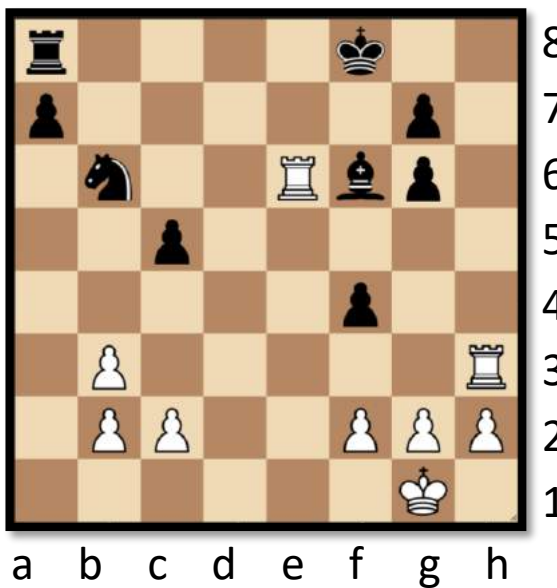
.....  
.....

3



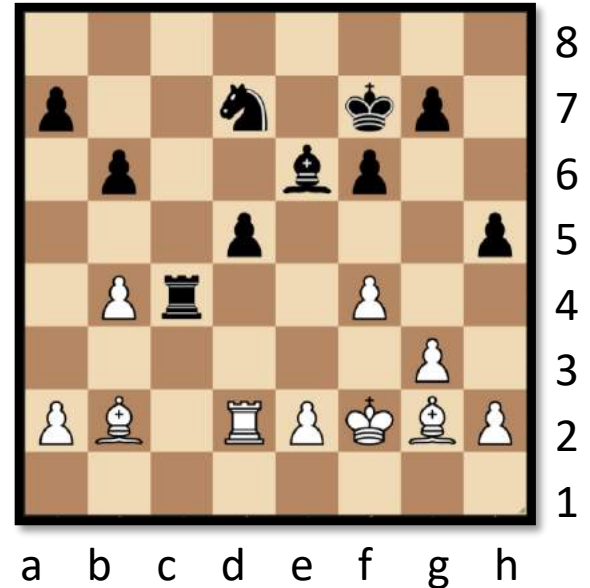
.....  
.....

2



.....  
.....

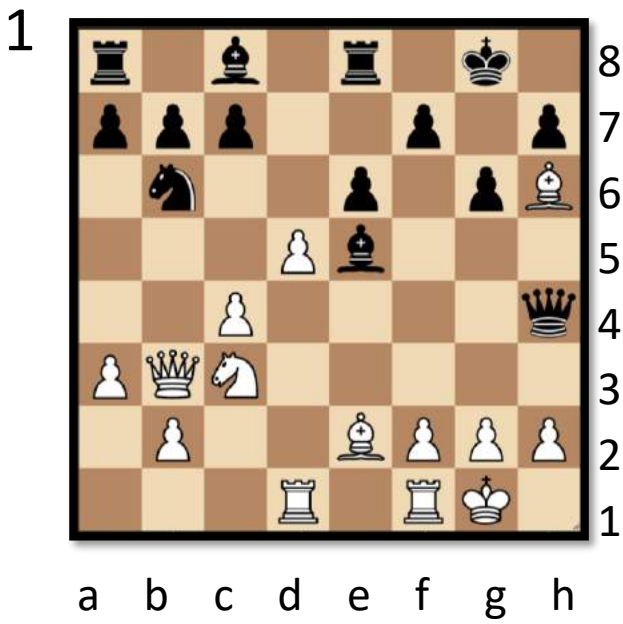
4



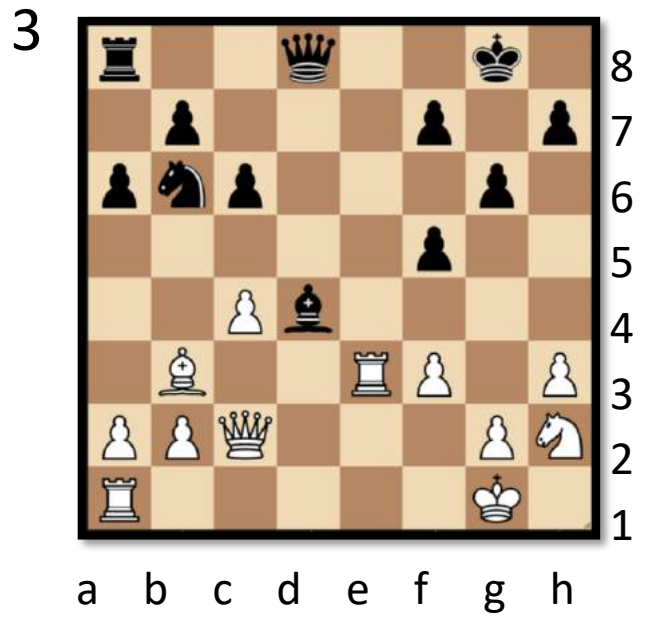
.....  
.....

# Exa

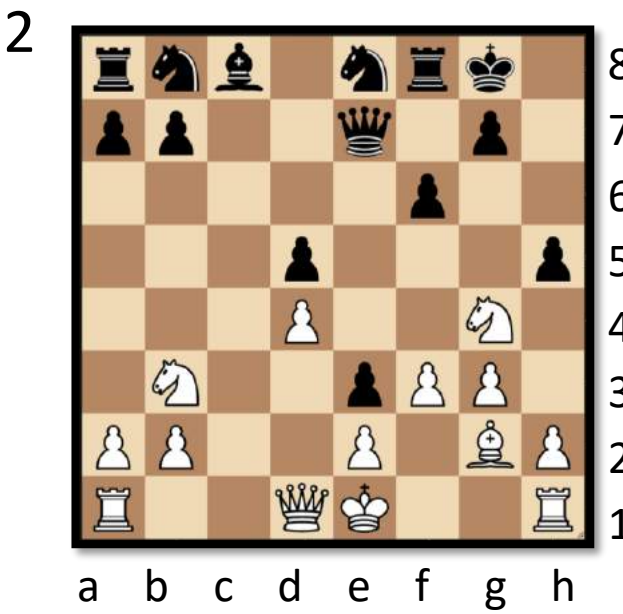
In each diagram it is white to move and find the best defence to avoid losing material or avoid having to give back their full material advantage.



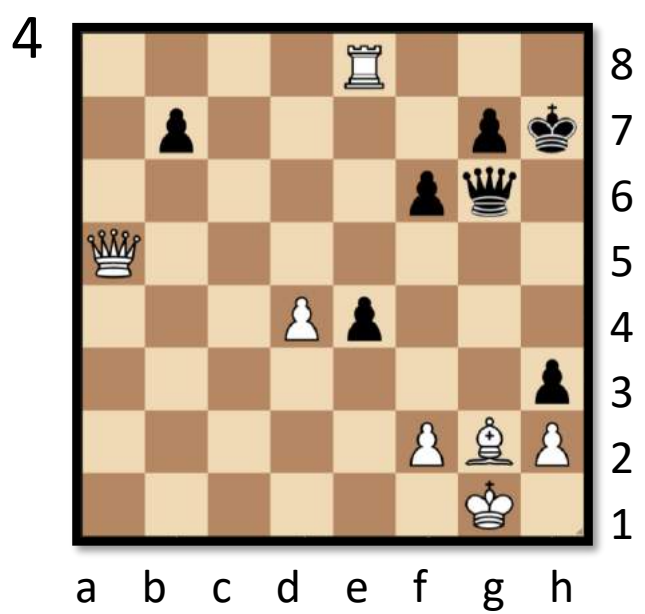
.....  
 .....



.....  
 .....



.....  
 .....



.....  
 .....

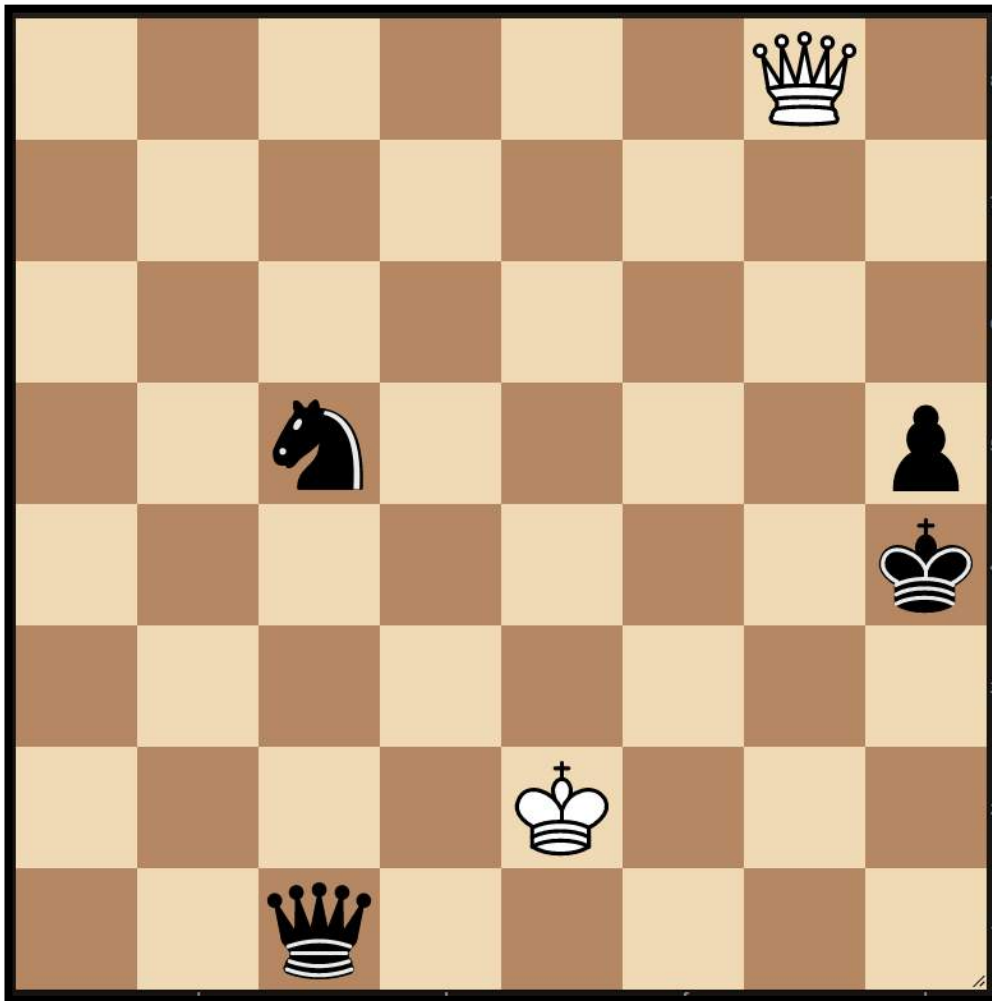


# Fun Puzzles

Over the next couple of pages you will find some more casual puzzles with a range of difficulty levels!



## Force Stalemate - Medium

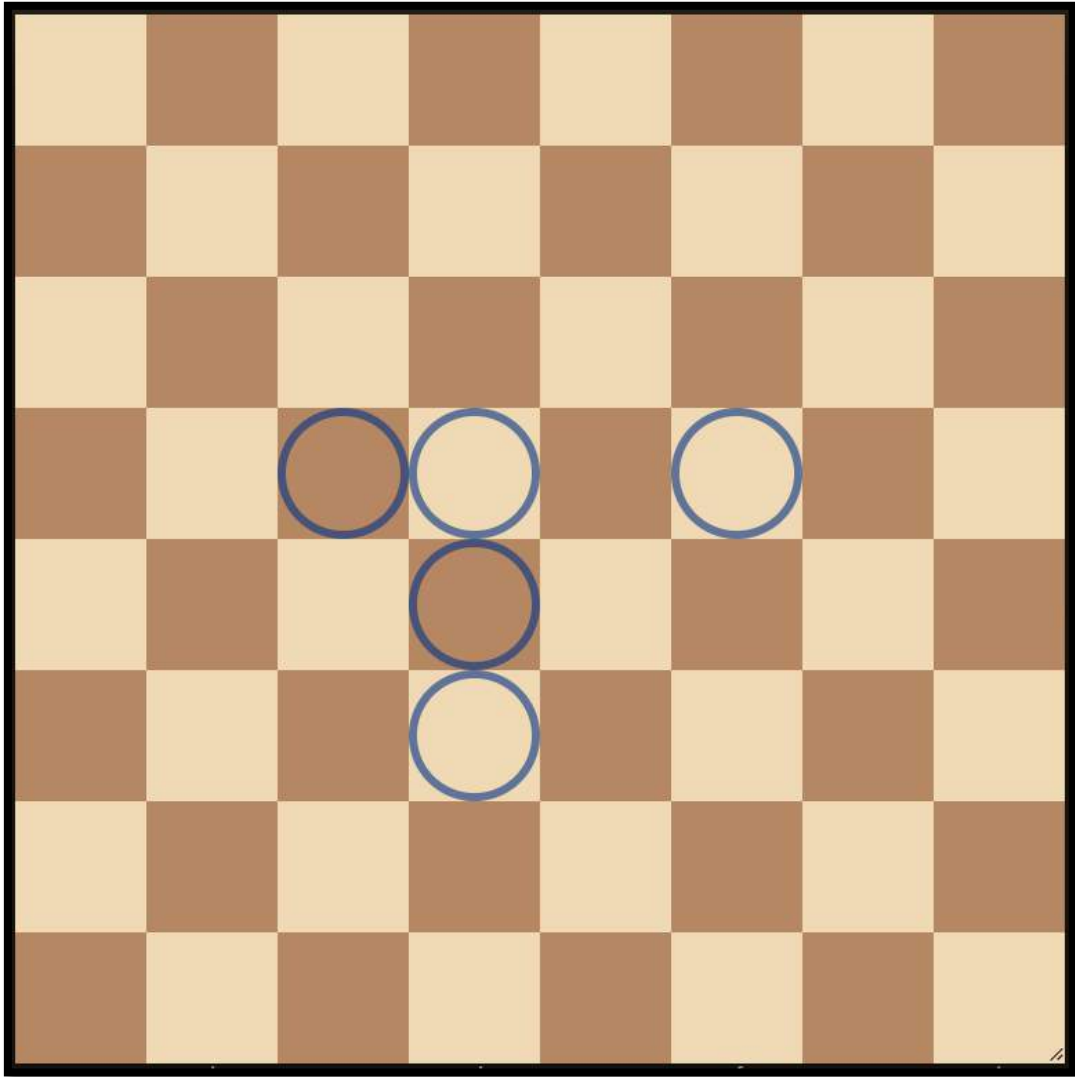


White is a knight and pawn down and should be looking for a way to draw the game.

**White to play and force black to place white into stalemate!**

# Create a Mate

Difficulty: Harder



Place the following pieces on the board so that black is in checkmate:

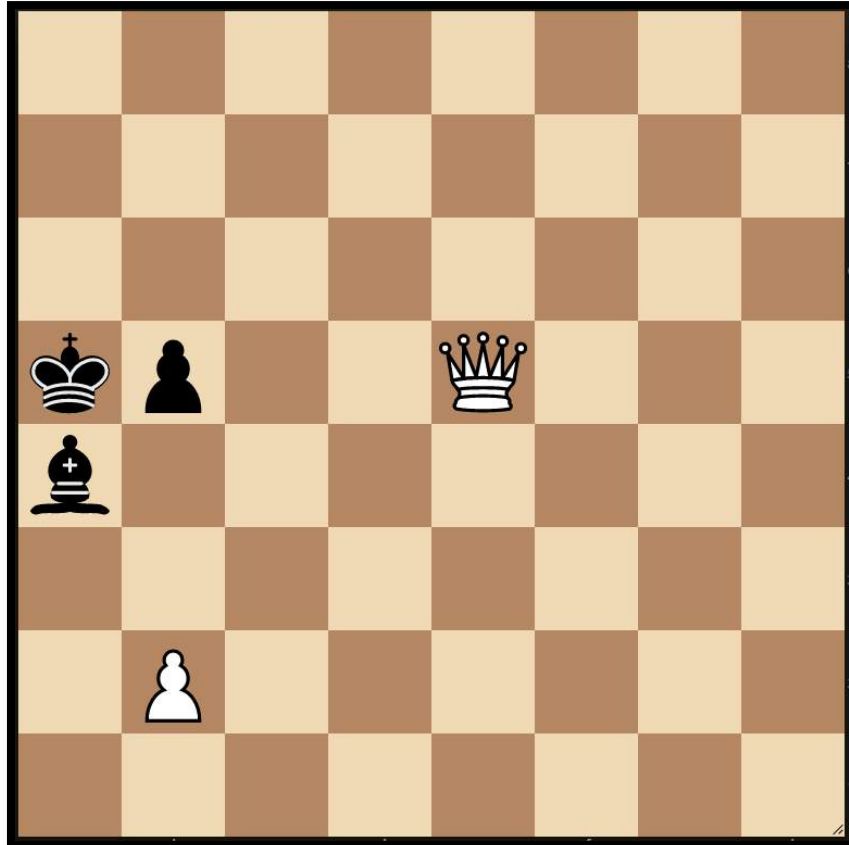
White Queen  
White Bishop  
White Knight

Black King  
Black Pawn

# Route Planner Mate in 2



Difficulty: Medium



In this position white makes **two consecutive moves to place black into checkmate**. White may not capture a piece and can only place black into check with the second move.

**Submit your solution for a chance to win a prize!**

Submit your answer via the form below:

<https://airtable.com/shrVsrBdsSWPRRDVK>

Correct answers will have a shot of winning a prize! Previous prizes include merchandise and invitations to master challenge matches

# Take a look at...



**Spring Club**

**Online Spring Chess Clubs**

From January 2021 the UK Chess Challenge are continuing CLUB – a family membership where players get access to weekly online competitions and lessons which are banded into five ability levels. There are three membership types so you can choose the features and budget that is right for you. The start date is the 11th January.

We are passionate about giving children the opportunity to “Learn, Practice and Play” and our clubs have all three of these elements in abundance mixed in of course with that vital ingredient – fun!



Check out our weekly Zoom lessons with WFM Sarah Longson on our website using the link below! We run classes every weekday for each ability level as well as tournaments weekdays and weekends!

<https://www.delanceyukschoolschesschallenge.com/spring-term>

If you enjoyed solving the tactics puzzles today you might enjoy WFM Sarah Longson and GM Danny King’s Chessable course on **Endgames!**

You can find out more online or using the link below.

<https://www.chessable.com/tournament-ready-the-endgame/course/33413/>

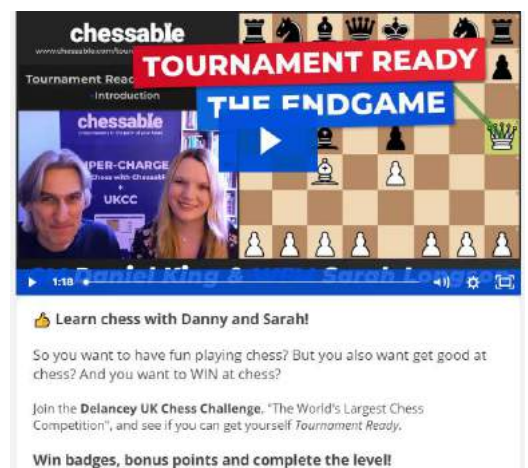
## Contact Us

Any questions, comments or ideas about anything chess related we’d love to hear from you!

Email: [admin@ukchess.co.uk](mailto:admin@ukchess.co.uk)

Phone: 0161 485 1729

Facebook: <https://www.facebook.com/DelanceyUKSchoolsChessChallenge/>



**chessable**

**TOURNAMENT READY**

**THE ENDGAME**

Learn chess with Danny and Sarah!

So you want to have fun playing chess? But you also want get good at chess? And you want to WIN at chess?

Join the **Delancey UK Chess Challenge**. “The World’s Largest Chess Competition”, and see if you can get yourself *Tournament Ready*.

Win badges, bonus points and complete the level!