



DELANCEY  
UK SCHOOLS  
CHESS CHALLENGE

**Activity Booklet**  
Saturday 23/01/2021



# Introduction

The UKCC weekly activity booklet will be sent out every Saturday morning and contains chess puzzles and activities for a range of ability levels.

Players are encouraged to at least try and complete the page most relevant to their ability level (see table below). However you are welcome to tackle the entire booklet! At the end of the booklet there are some more general puzzles / activities for everyone to enjoy

## Solutions

Solutions will be posted alongside the following weeks activity booklet and there will also be a video solution guide.

Please email us any feedback or ideas for future puzzles!

## Ability Levels

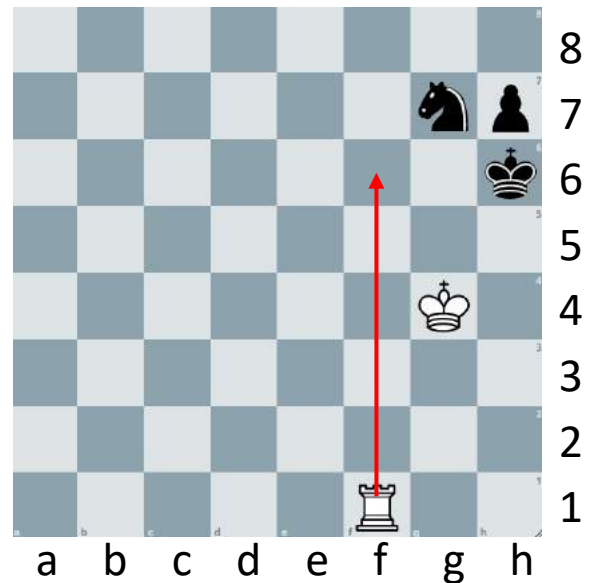
Club	Description	Approximate ECF Grade *
DECA – Club	Complete beginners and those with an incomplete grasp of the rules	Ungraded
MEGA – Club	Know the rules but little grasp of planning what to do beyond capturing and quick checkmates. Little to no tournament experience	0 – 59
GIGA – Club	Players with some tournament experience looking to “level up”	60 – 99
TERA – Club	More experienced players who have won or placed highly in local competitions	100 – 129
EXA - Club	Very experienced players with success at National Level events	130 – 159

# Example

Below are examples of how you might write your solution to a puzzle presented in the booklet. Or you might prefer to just solve them in your head – completely up to you!

**Q: Can you find checkmate in one for white?**

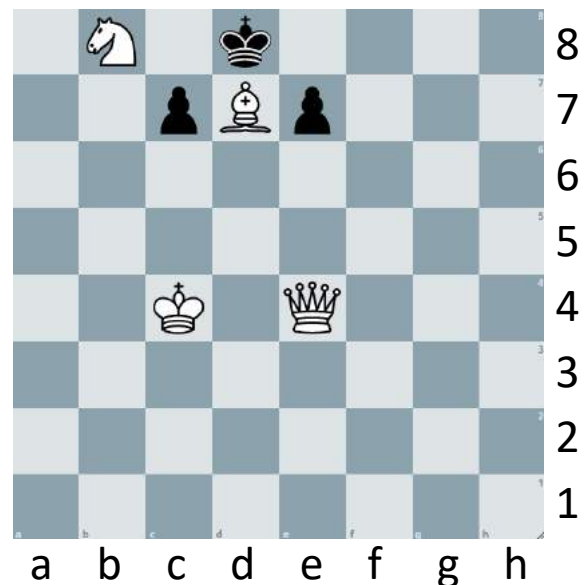
Here, because the solution is only one move, you might draw arrows on the board or you can use the lines below to answer – or both!



Rf6#  
.....  
.....

**Q: Can you find checkmate in two for white?**

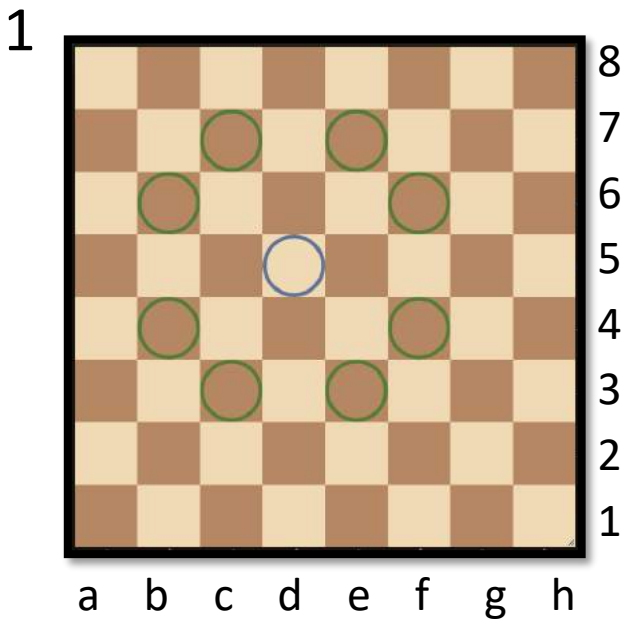
Here, the solution is a bit (OK a lot!) trickier and requires consideration of multiple variations. If you are familiar with coordinates, it is probably best that you write your answer out as shown.



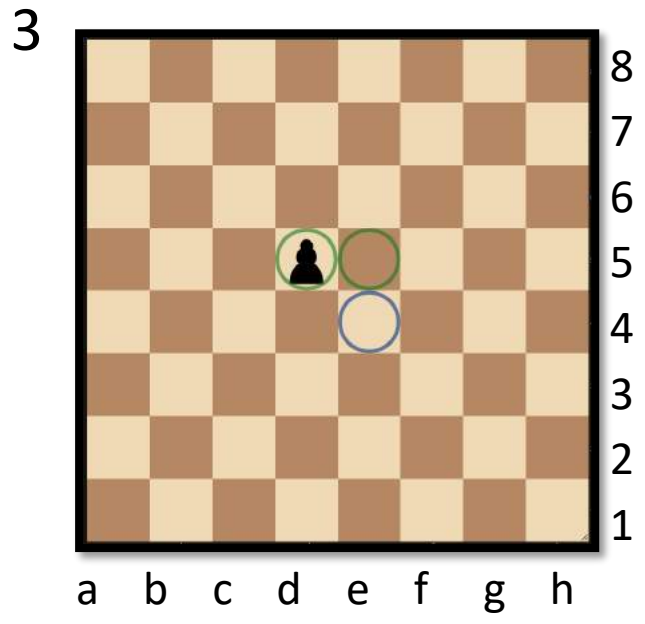
1.Qe1 e6 (1..c6 2.Qa5#) 2. Qh4#  
.....  
.....

# Deca

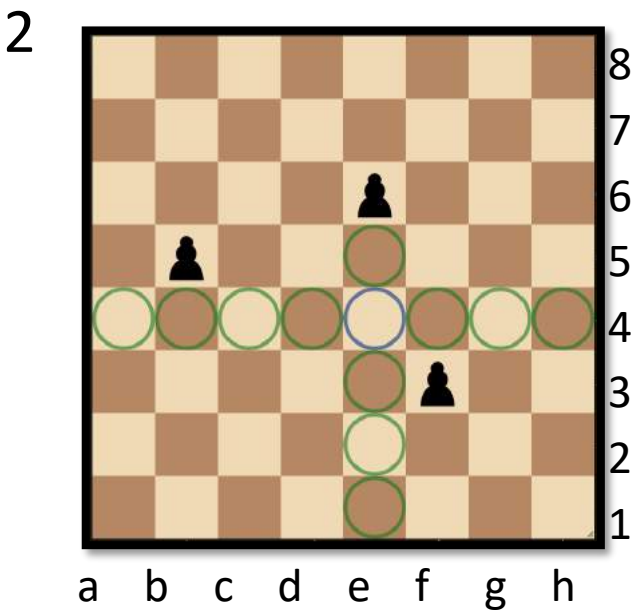
There is a missing white piece that should be stood on the square highlighted in blue. The green squares indicate which squares it can move to. On each board work out what the missing white piece is.



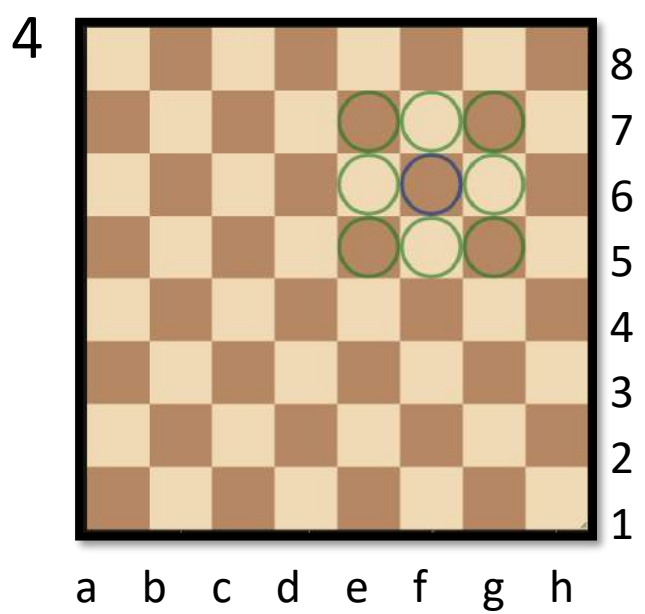
.....  
.....



.....  
.....



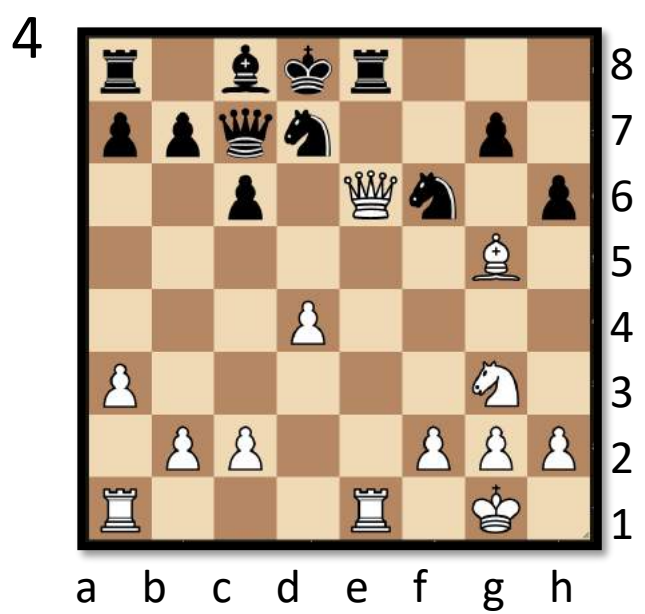
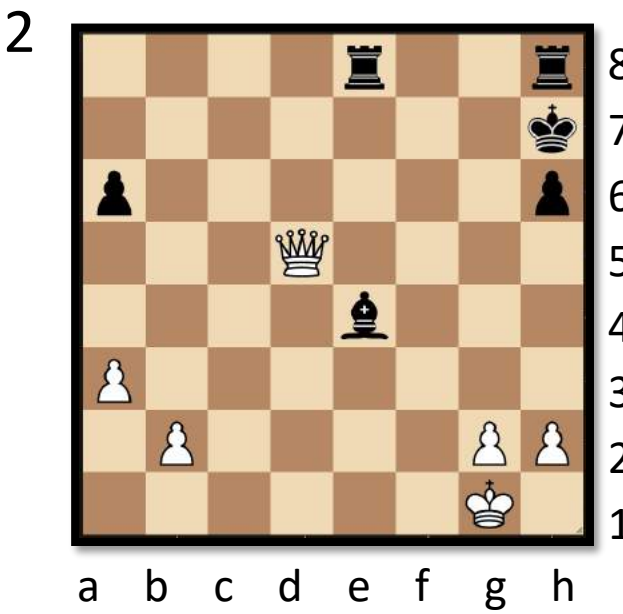
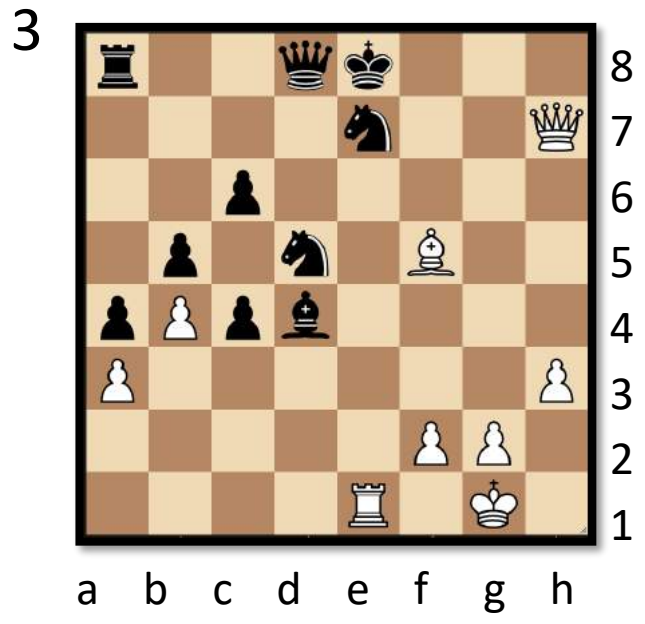
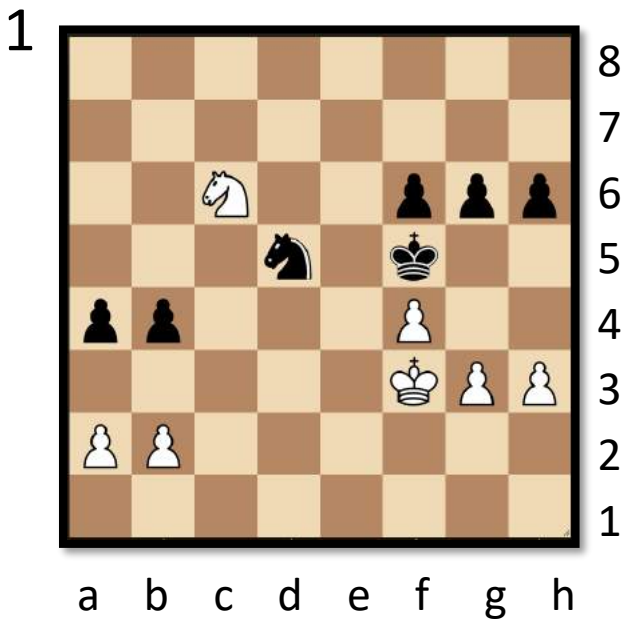
.....  
.....



.....  
.....

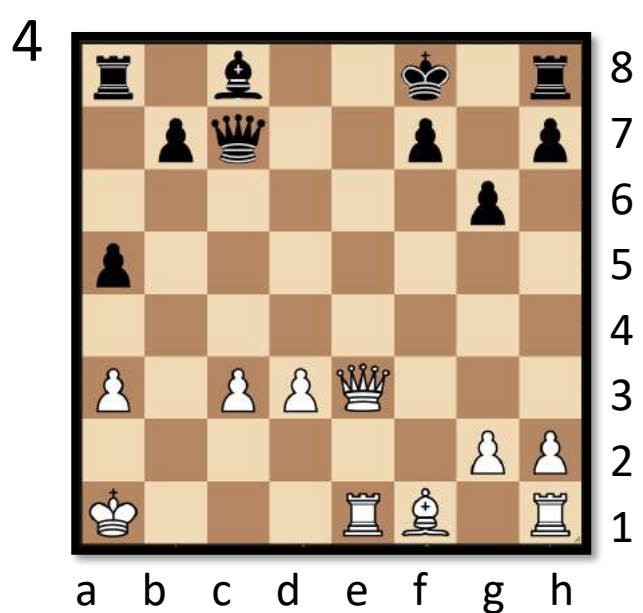
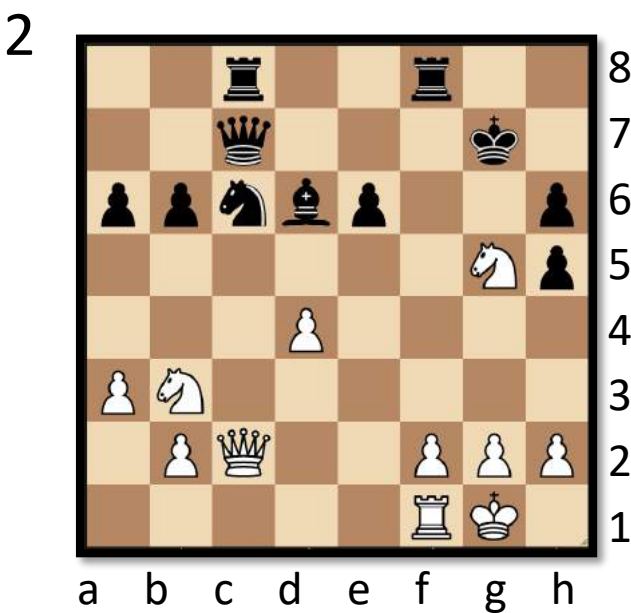
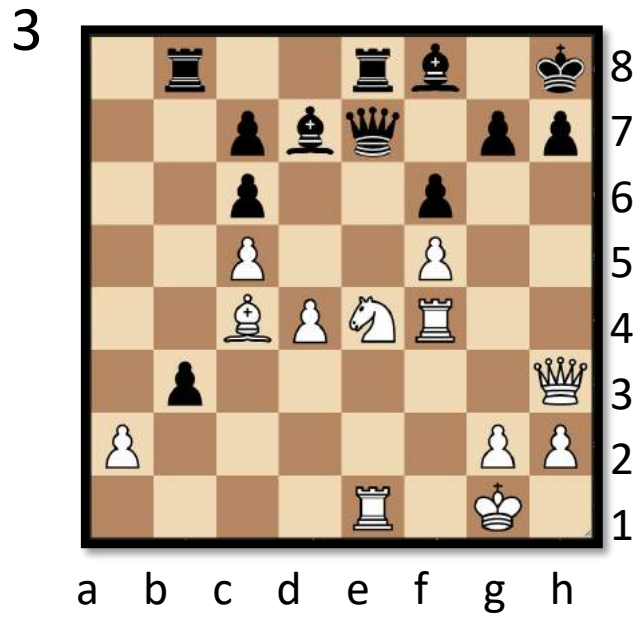
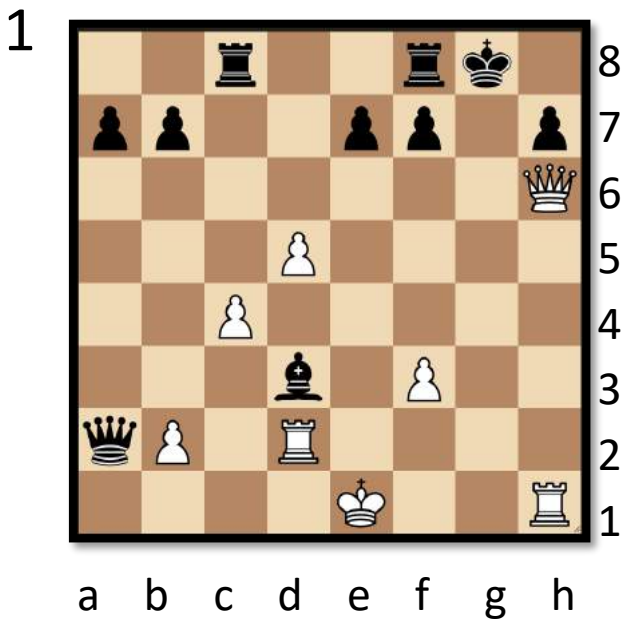
# Mega

White to play and checkmate in one move! Look out for pins!



# Giga

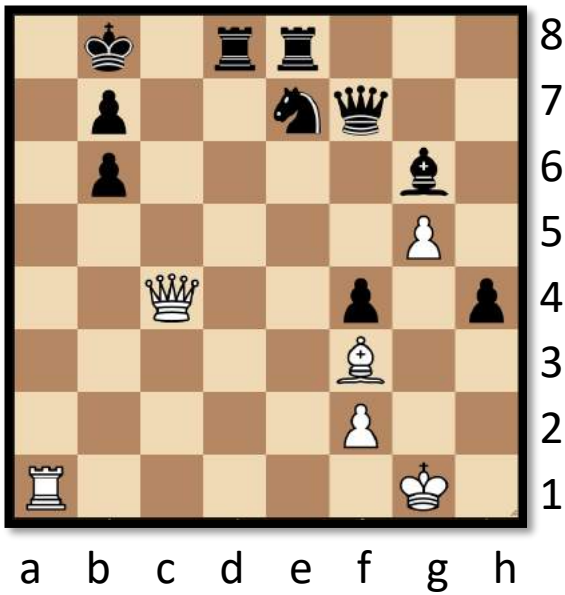
In each diagram it is white to move and checkmate black in two moves (two moves for white, one for black).



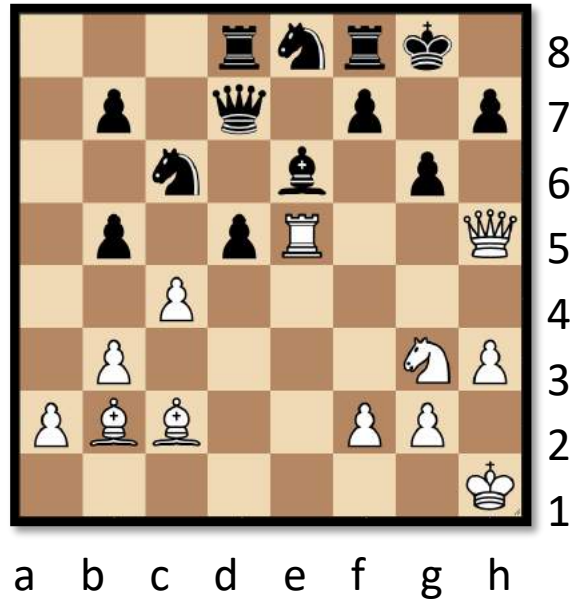
# Tera

In each diagram it is white to move and checkmate black in three moves (three moves for white, two for black).

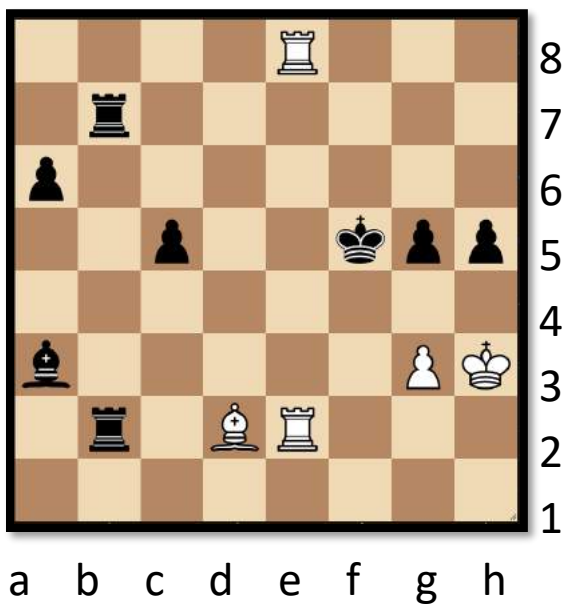
1



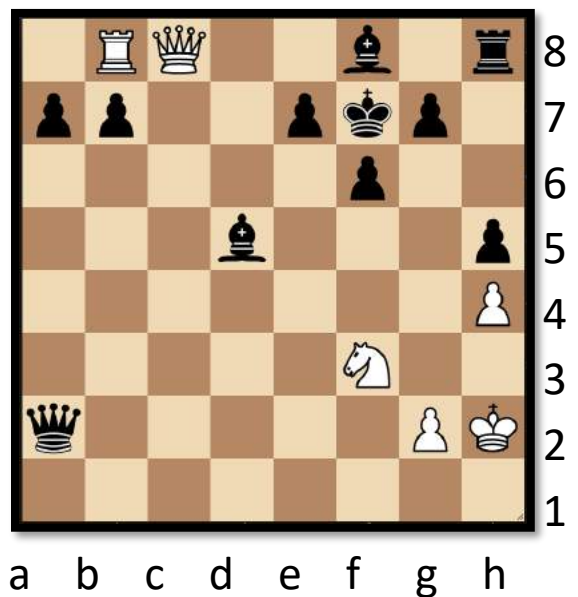
3



2

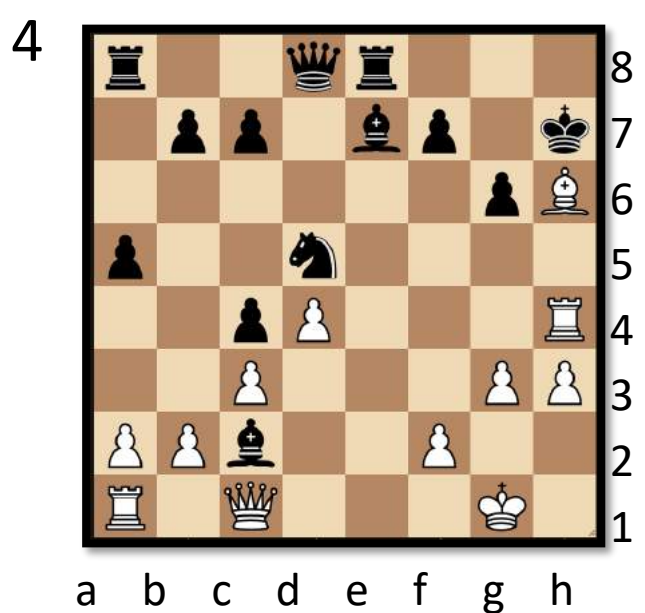
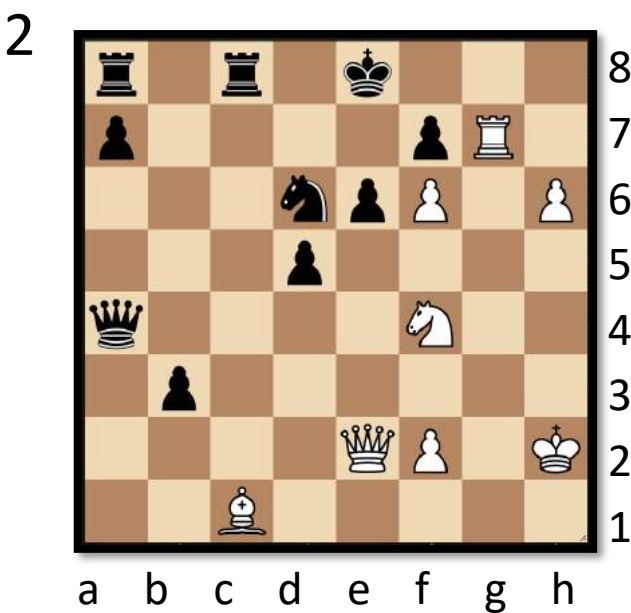
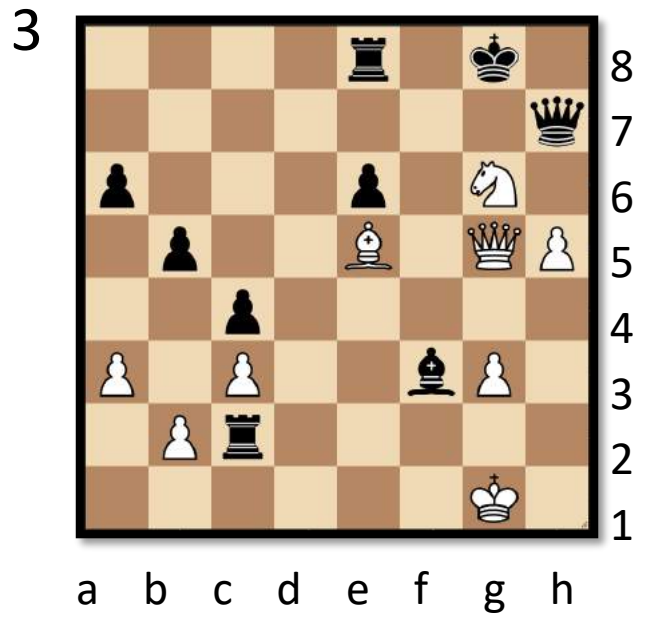
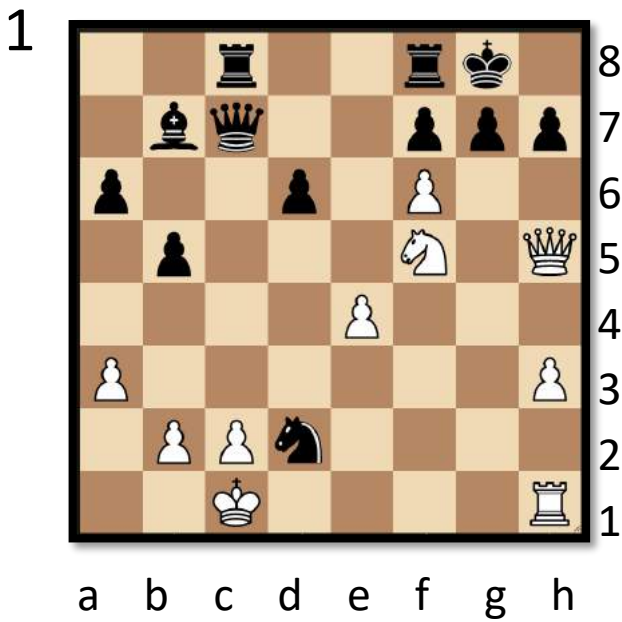


4



# Exa

In each diagram it is white to move and checkmate black in four moves (four moves for white, three for black).



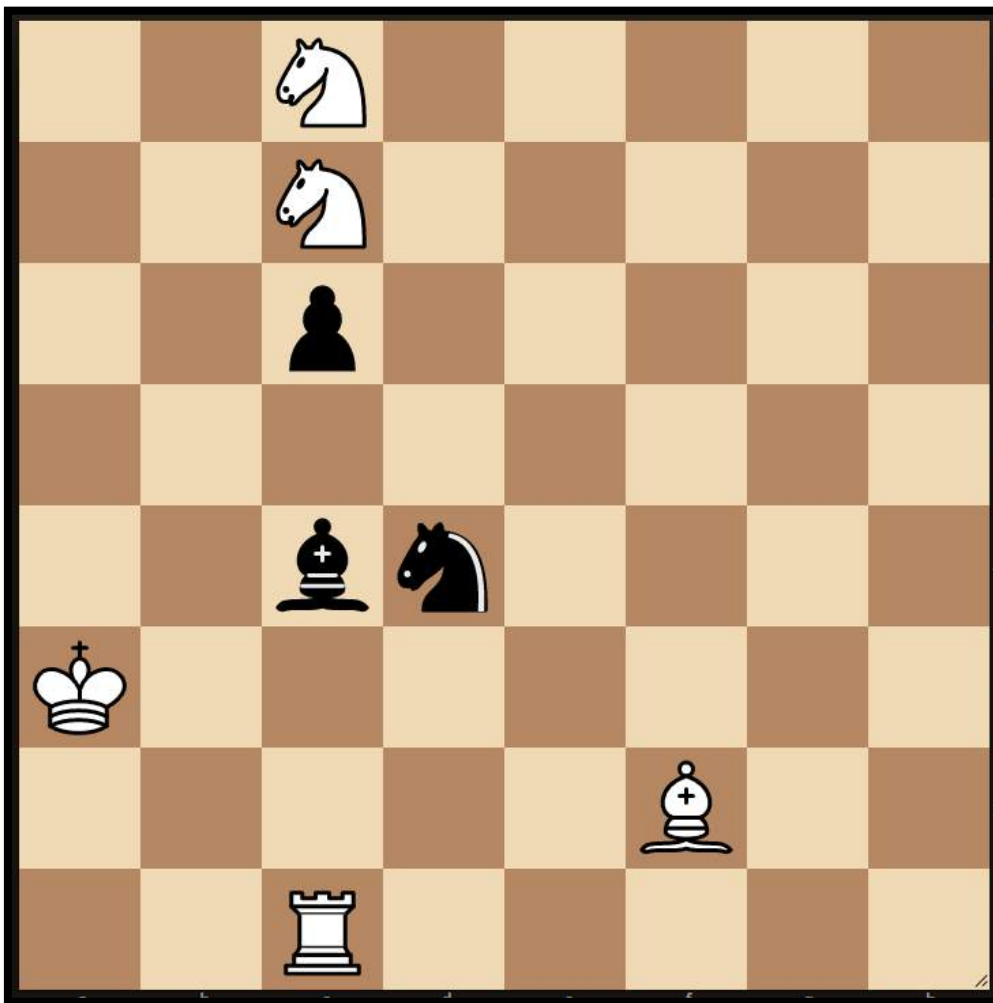


# Fun Puzzles

Over the next couple of pages you will find some more casual puzzles with a range of difficulty levels!



## Triple Loyd - Medium

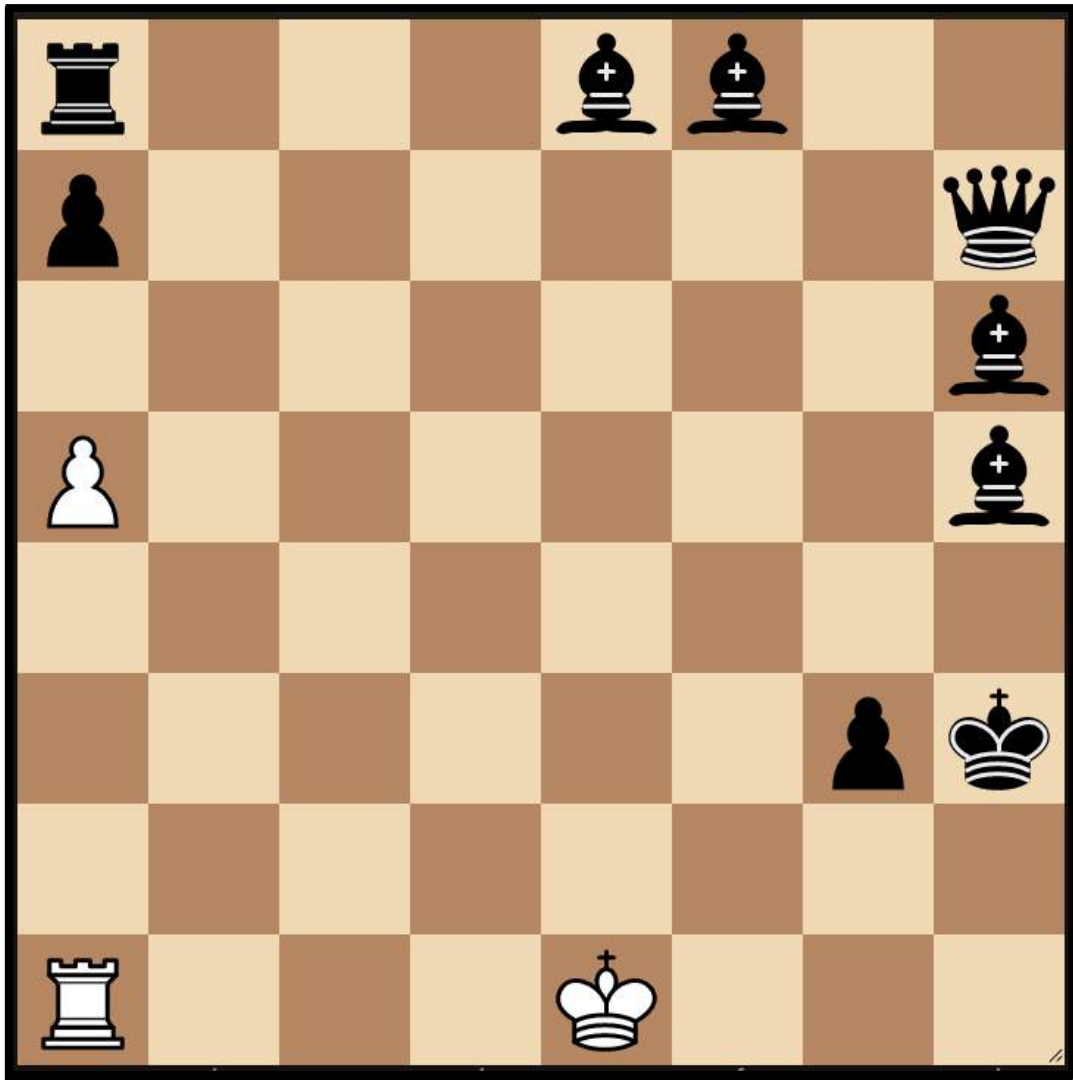


In a “Triple Loyd” puzzle you will notice the black king is missing from the board. You have to place the black king in 3 different positions (though sometimes the same square may be used twice)!

- 1) In the first position the black king is in checkmate
- 2) In the second position the black king is in stalemate
- 3) In the third position white can deliver checkmate in one move (and write down this move)!

# Rook Maze

Difficulty: Easier

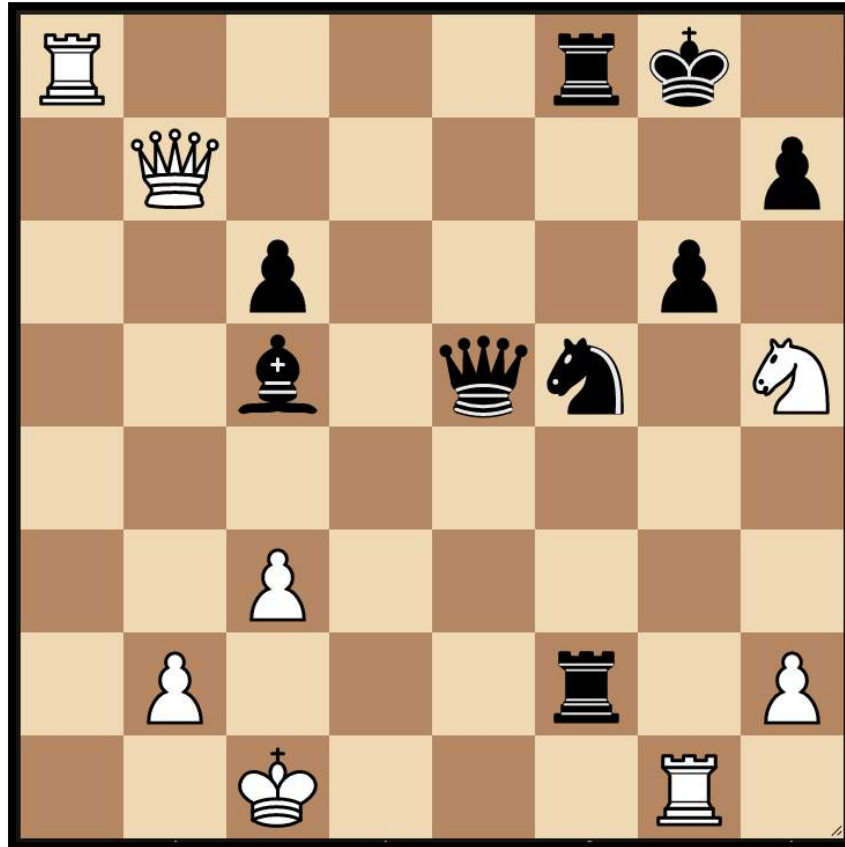


In this rook maze white has to move the rook consecutively until it captures the black king. It is not allowed to capture any black pieces and cannot move to squares that are attacked by black pieces. **The rook can capture the king in 13 moves** – can you find your way through the maze?

# Help Mate in 1

PUZZLE  
OF THE  
WEEK

Difficulty: Harder



This puzzle is known as a 'helpmate'. **Black** has to make the worst possible move, helping white to deliver checkmate on his next move!

So where will black move, and what will be white's reply?

**Submit your solution for a chance to win a prize!**

Submit your answer via the form below:

<https://airtable.com/shrVsrBdsSWPRRDVK>

Correct answers will have a shot of winning a prize! Previous prizes include merchandise and invitations to master challenge matches

# Take a look at...



**Online Spring Chess Clubs**

From January 2021 the UK Chess Challenge are continuing CLUB – a family membership where players get access to weekly online competitions and lessons which are banded into five ability levels. There are three membership types so you can choose the features and budget that is right for you. The start date is the 11th January.

We are passionate about giving children the opportunity to “Learn, Practice and Play” and our clubs have all three of these elements in abundance mixed in of course with that vital ingredient – fun!



Check out our weekly Zoom lessons with WFM Sarah Longson on our website using the link below! We run classes every weekday for each ability level as well as tournaments weekdays and weekends!

<https://www.delanceyukschoolschesschallenge.com/spring-term>

If you enjoyed solving the tactics puzzles today you might enjoy WFM Sarah Longson and GM Danny King’s Chessable course on **Endgames!**

You can find out more online or using the link below.

<https://www.chessable.com/tournament-ready-the-endgame/course/33413/>

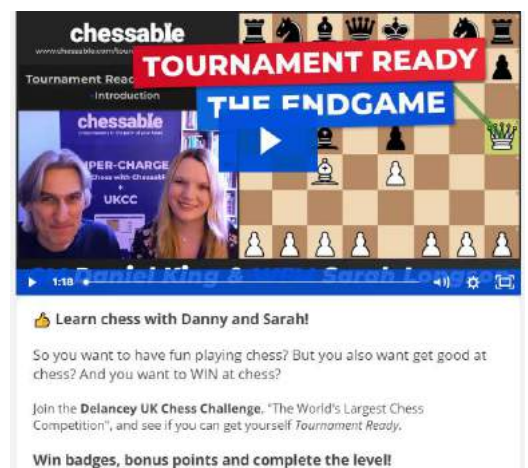
## Contact Us

Any questions, comments or ideas about anything chess related we’d love to hear from you!

Email: [admin@ukchess.co.uk](mailto:admin@ukchess.co.uk)

Phone: 0161 485 1729

Facebook: <https://www.facebook.com/DelanceyUKSchoolsChessChallenge/>



**Learn chess with Danny and Sarah!**

So you want to have fun playing chess? But you also want get good at chess? And you want to WIN at chess?

Join the **Delancey UK Chess Challenge**. “The World’s Largest Chess Competition”, and see if you can get yourself *Tournament Ready*.

Win badges, bonus points and complete the level!

Hint to mate in 6: The first move is 1.Rh1 and the last move is 6.Ba3-b2 checkmate...