



DELANCEY
UK SCHOOLS

CHESS CHALLENGE

Activity Booklet

Saturday 21/11/2020



Introduction

The UKCC weekly activity booklet will be sent out every Saturday morning and contains chess puzzles and activities for a range of ability levels.

Players are encouraged to at least try and complete the page most relevant to their ability level (see table below). However you are welcome to tackle the entire booklet! At the end of the booklet there are some more general puzzles / activities for everyone to enjoy

Solutions

Solutions will be posted alongside the following weeks activity booklet and there will also be a video solution guide.

Please email us any feedback or ideas for future puzzles!

Ability Levels

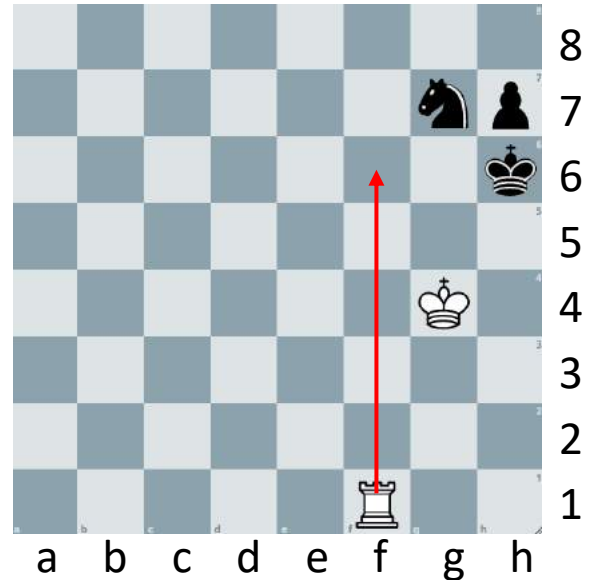
Club	Description	Approximate ECF Grade *
DECA – Club	Complete beginners and those with an incomplete grasp of the rules	Ungraded
MEGA – Club	Know the rules but little grasp of planning what to do beyond capturing and quick checkmates. Little to no tournament experience	0 – 59
GIGA – Club	Players with some tournament experience looking to “level up”	60 – 99
TERA – Club	More experienced players who have won or placed highly in local competitions	100 – 129
EXA - Club	Very experienced players with success at National Level events	130 – 159

Example

Below are examples of how you might write your solution to a puzzle presented in the booklet. Or you might prefer to just solve them in your head – completely up to you!

Q: Can you find checkmate in one for white?

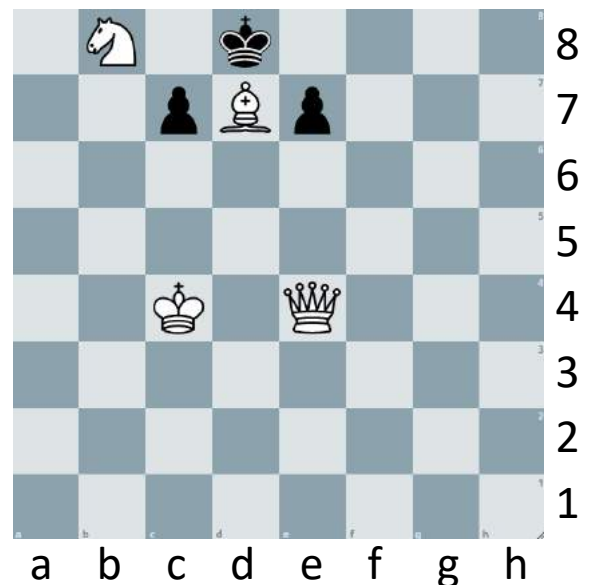
Here, because the solution is only one move, you might draw arrows on the board or you can use the lines below to answer – or both!



Rf6#
.....
.....

Q: Can you find checkmate in two for white?

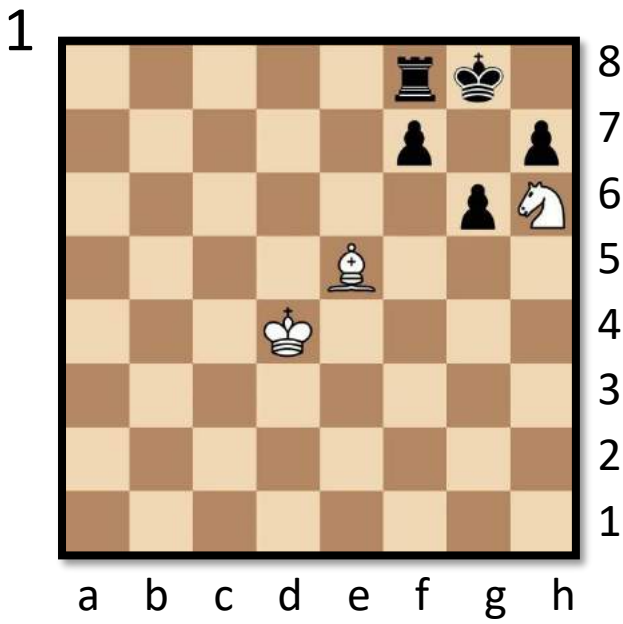
Here, the solution is a bit (OK a lot!) trickier and requires consideration of multiple variations. If you are familiar with coordinates, it is probably best that you write your answer out as shown.



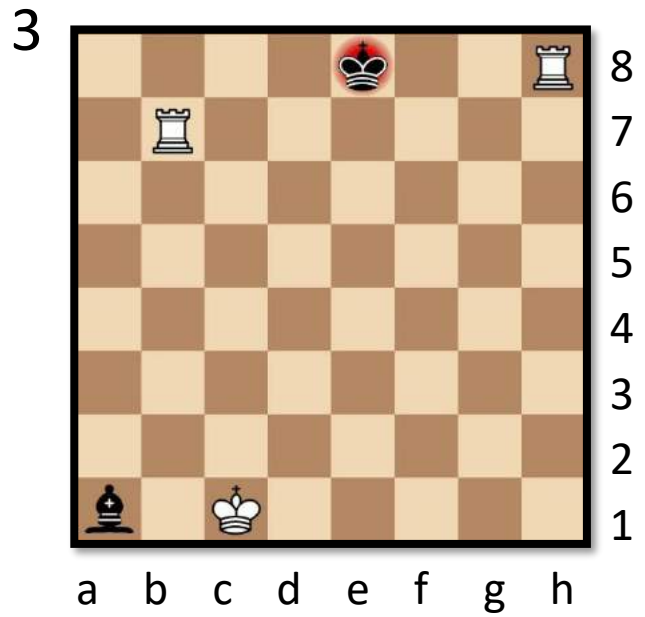
1.Qe1 e6 (1..c6 2.Qa5#) 2. Qh4#
.....
.....

Deca

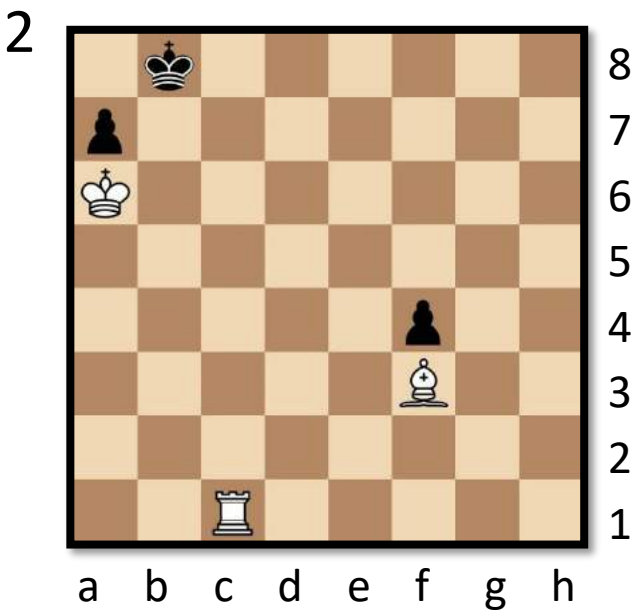
In these puzzles it is black to play. You have to determine whether it is checkmate, stalemate or neither!



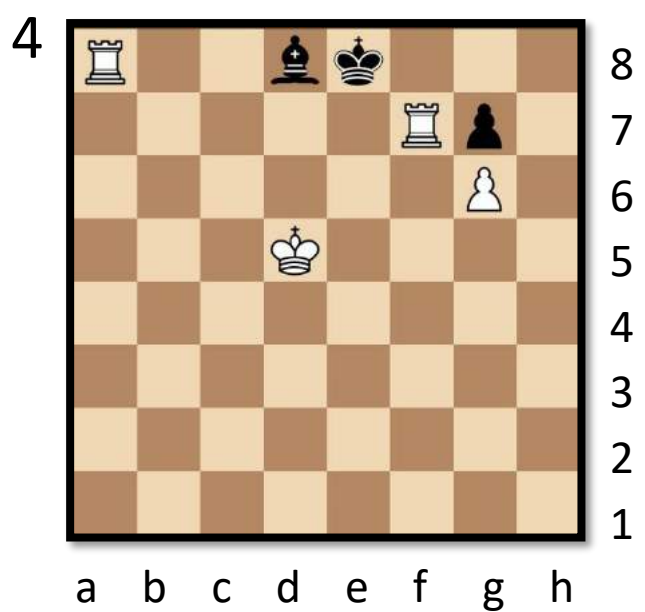
.....
.....



.....
.....



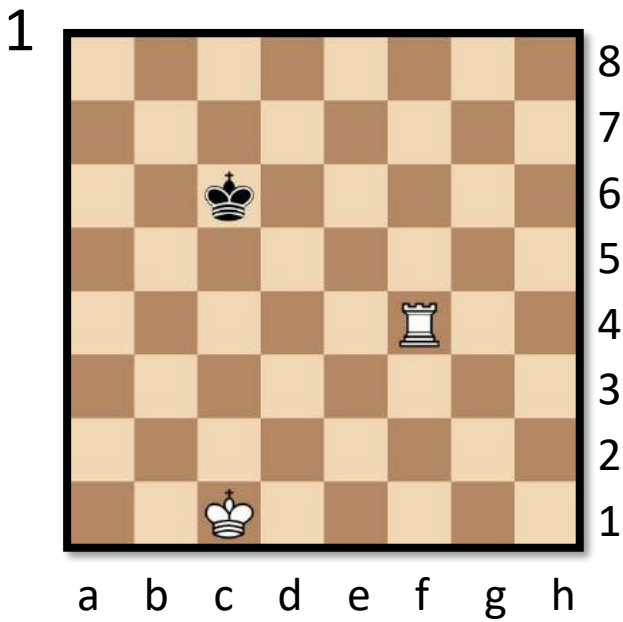
.....
.....



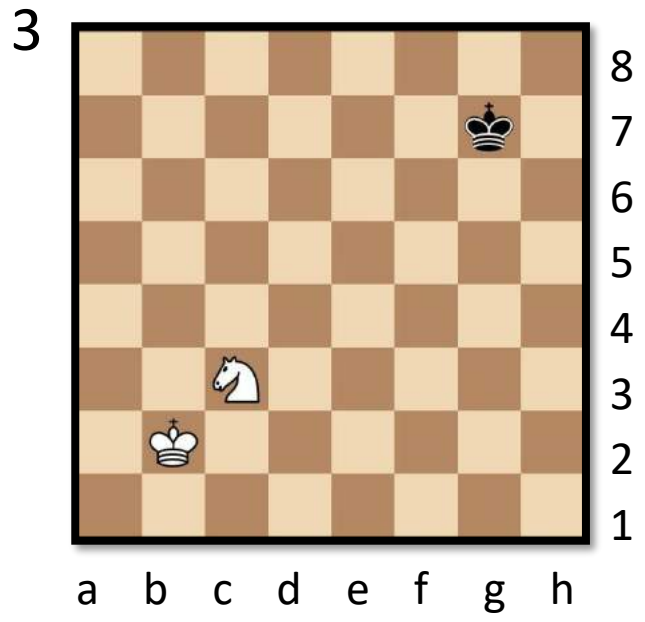
.....
.....

Mega

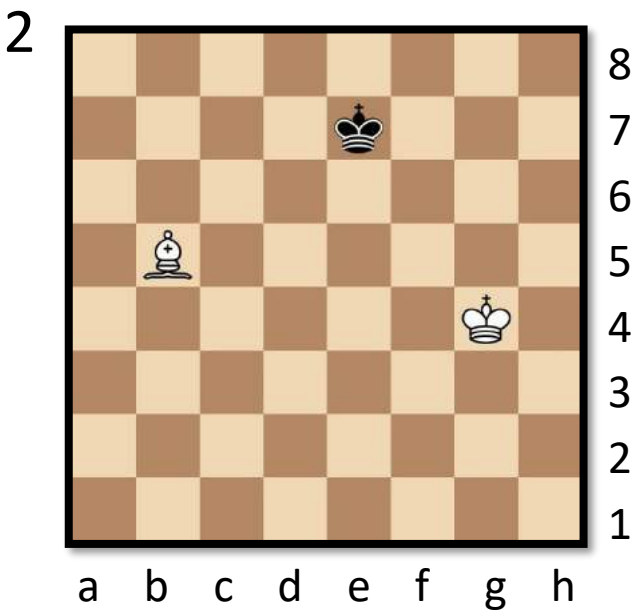
In each diagram it is white to move – you must determine what the correct result should be with best play (white win, black win or a draw). No need to calculate variations – just write the result.



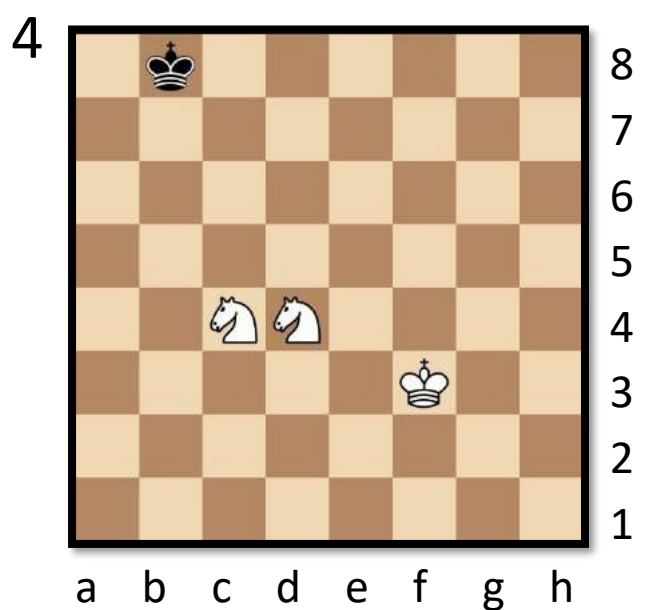
.....
.....



.....
.....



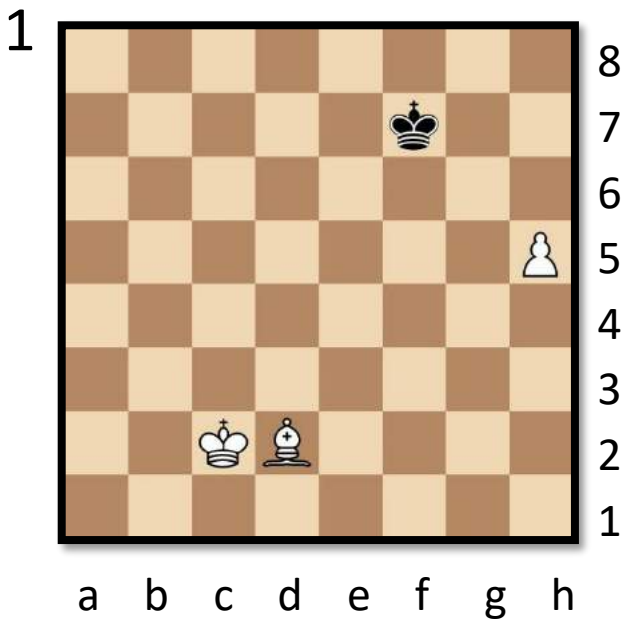
.....
.....



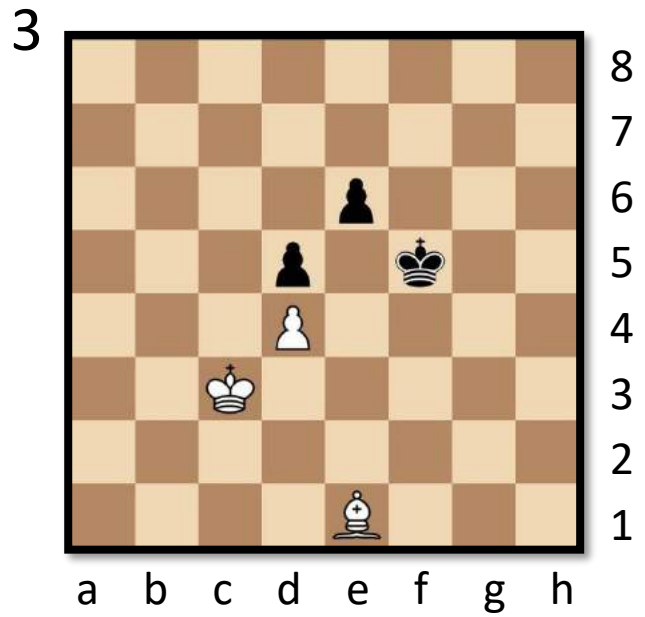
.....
.....

Giga

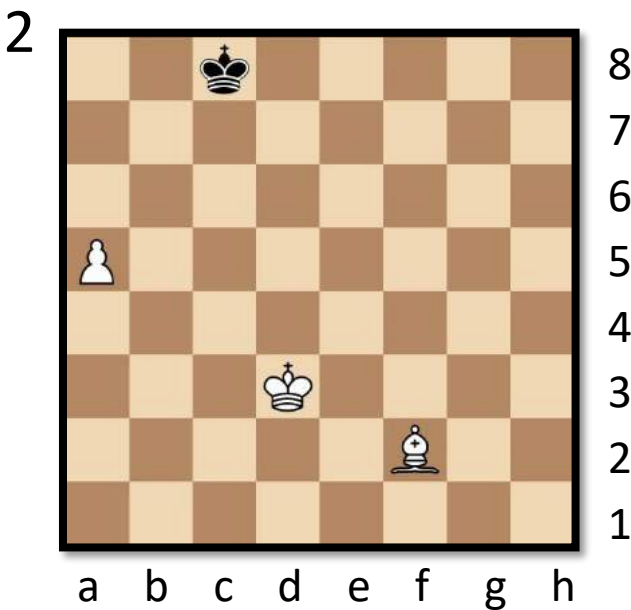
In each diagram it is white to move – you must determine what the correct result should be with best play (white win, black win or a draw). Try and write down your main variation as well (first 2 moves)



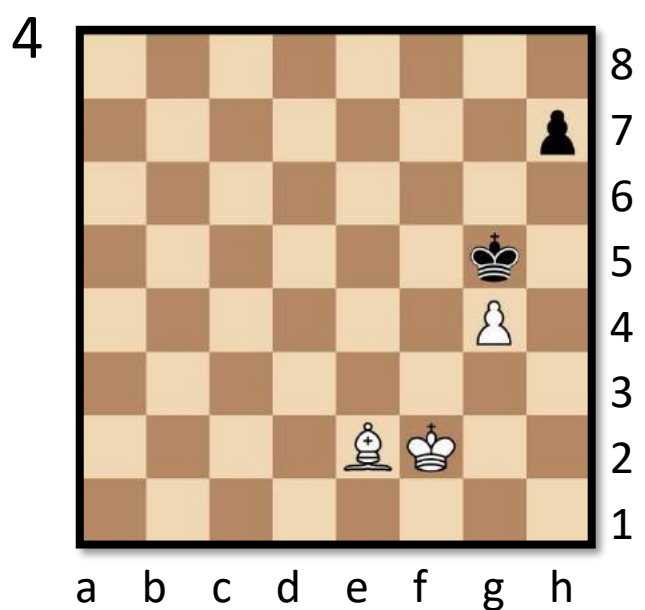
.....
.....



.....
.....



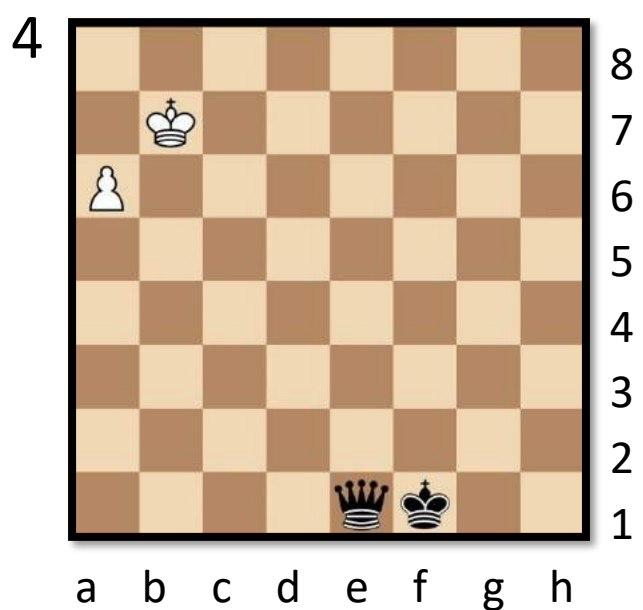
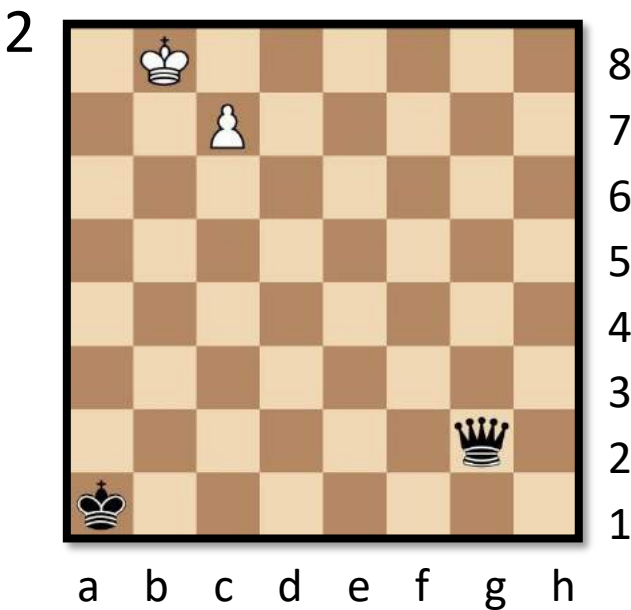
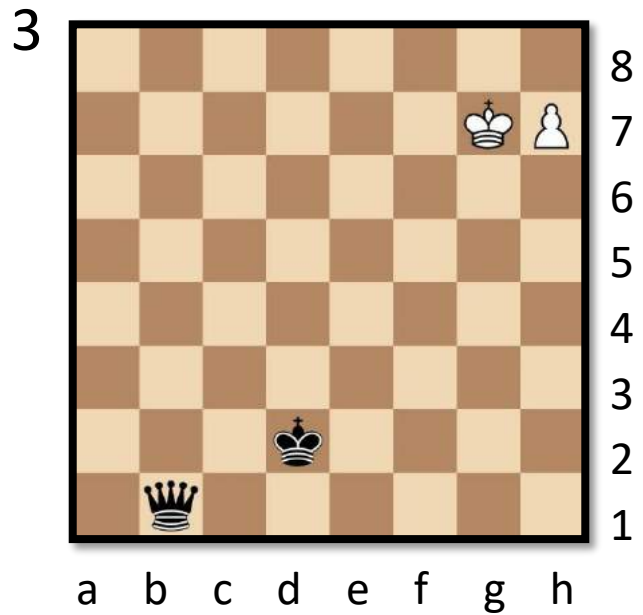
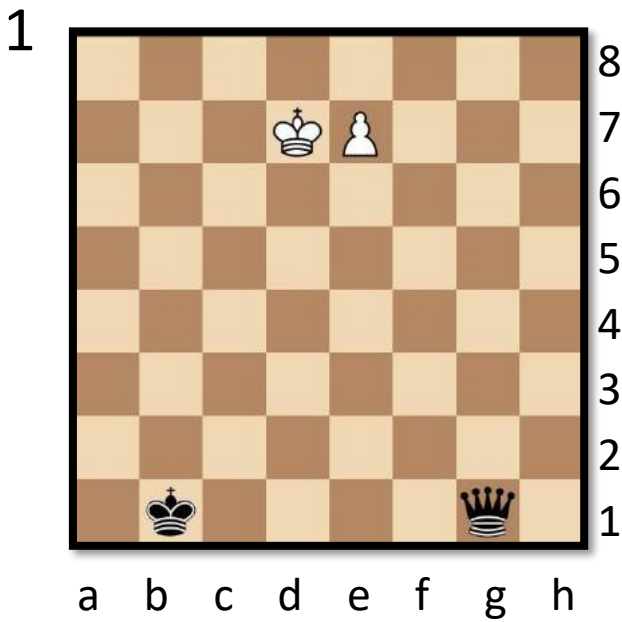
.....
.....



.....
.....

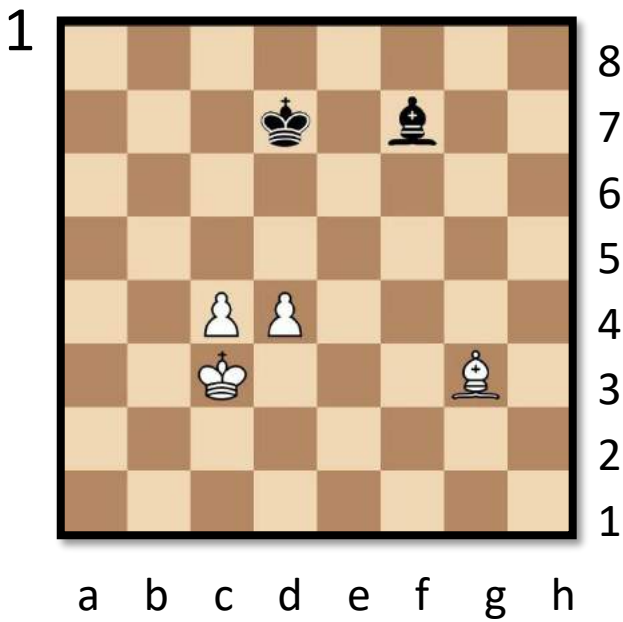
Tera

Today we are focusing on queen vs a pawn on the 7th endgames (very common)!. In each diagram it is white to move – you must determine what the correct result should be with best play (white win, black win or a draw). No need for full variations

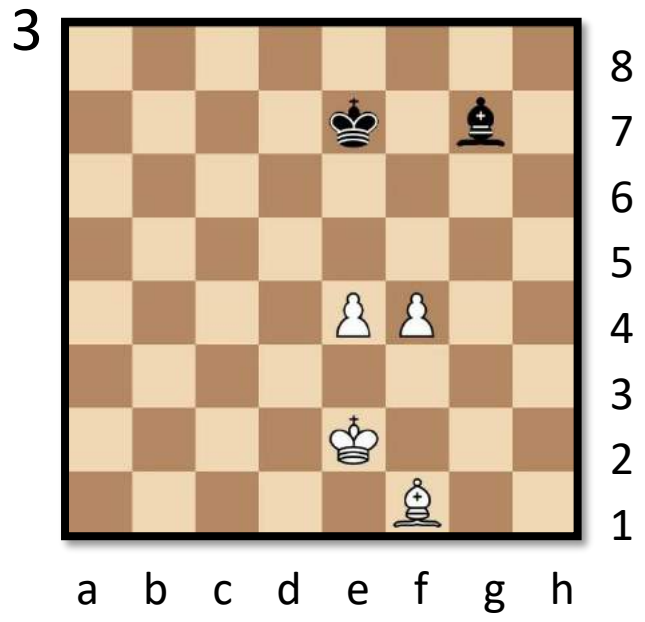


Exa

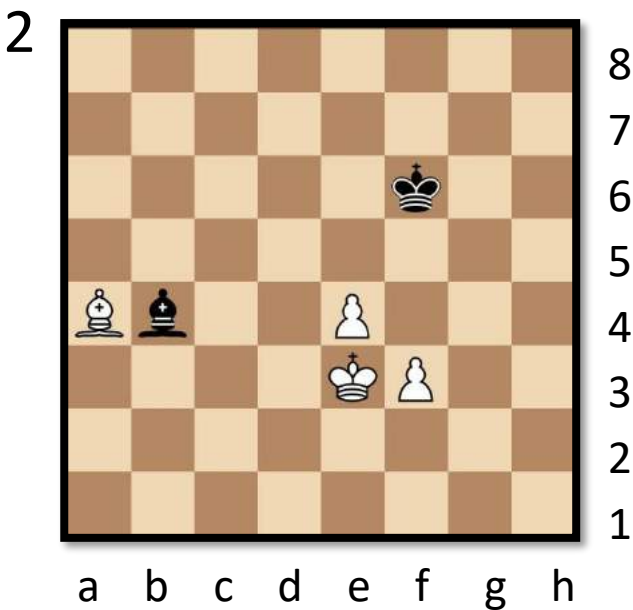
Today we are focusing on opposite colour bishop endgames. In each diagram it is white to move – you must determine what the correct result should be with best play (white win, black win or a draw). Try and write down the key first moves of your main variation as well.



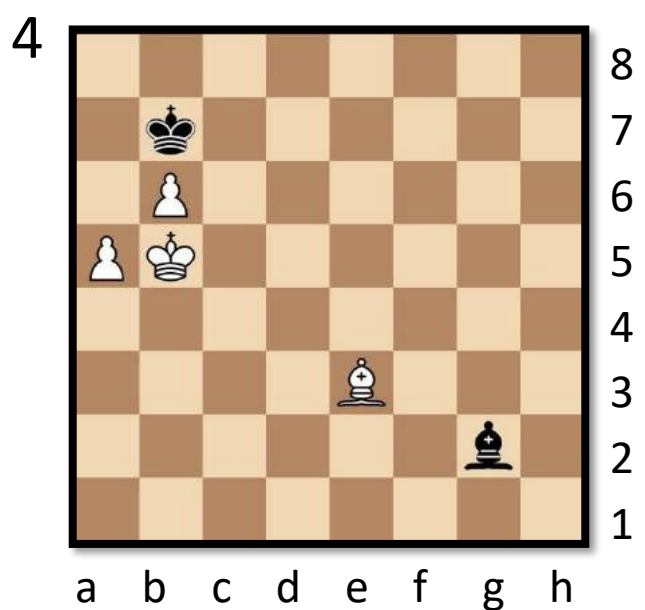
.....
.....



.....
.....



.....
.....



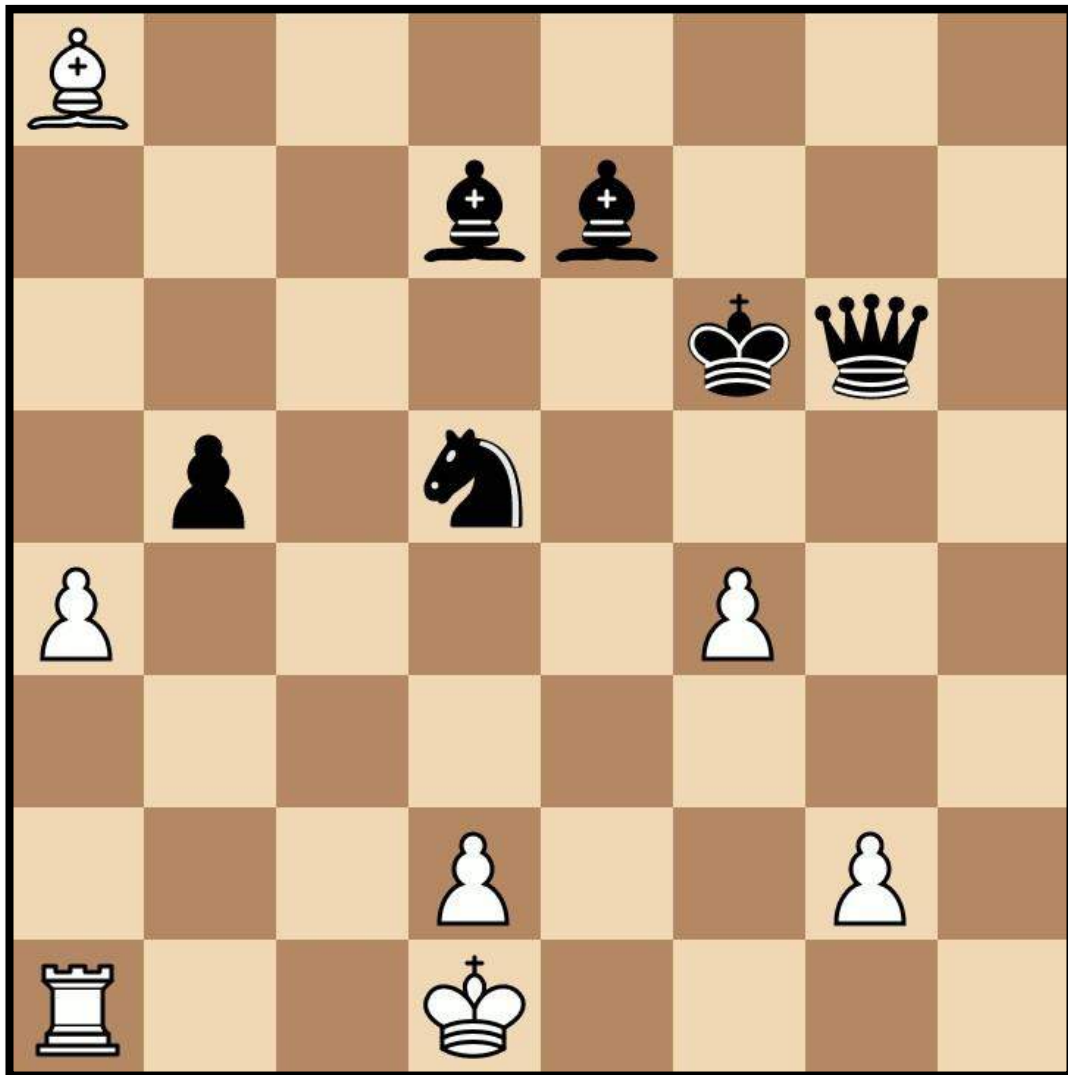
.....
.....

Fun Puzzles

Over the next couple of pages you will find some more casual ranging in difficulty from easy to difficult!



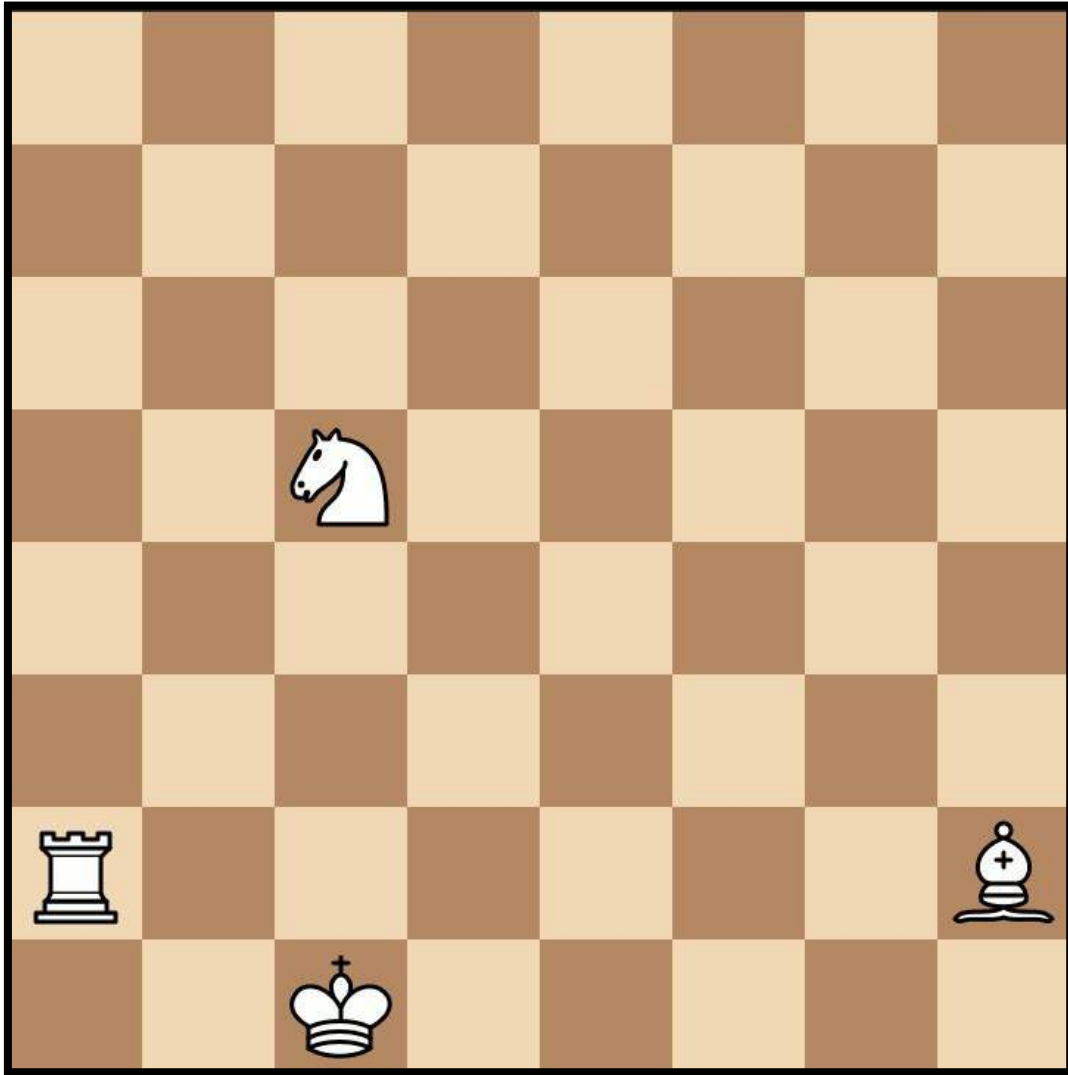
Rook Maze - Medium



In this maze white has to move the rook consecutively until it captures the black king. It is not allowed to capture any black pieces and cannot move to squares that are attacked by black pieces. **The rook can capture the king in 12 moves** – can you find your way through the maze?

Triple Loyd

Difficulty: Easier



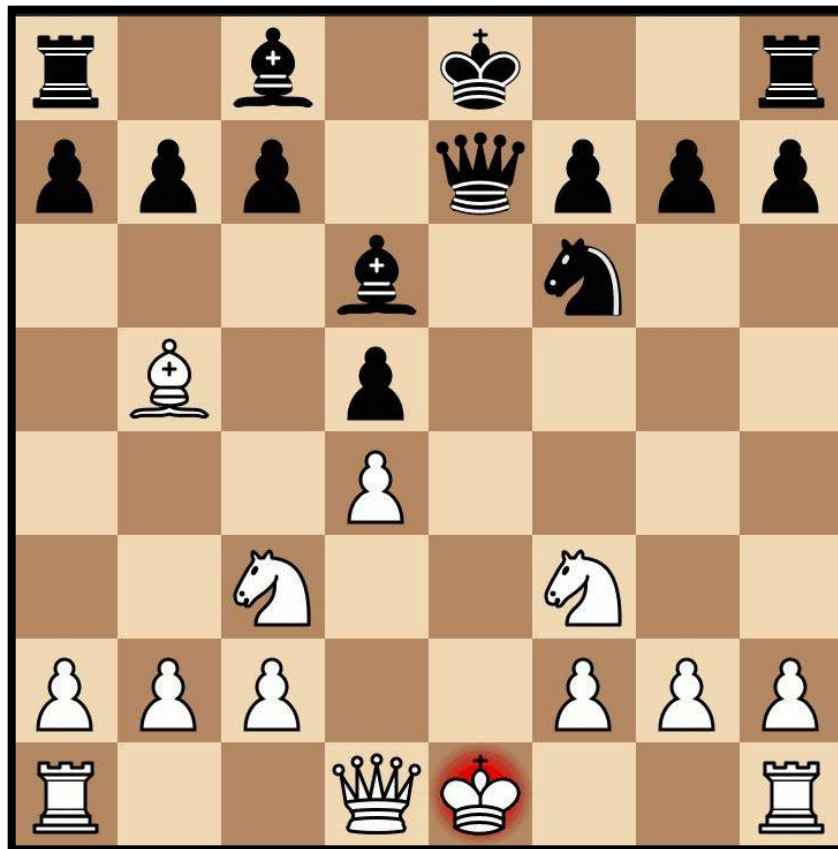
In a “Triple Loyd” puzzle you will notice the black king is missing from the board. You have to place the black king in 3 different positions.

- 1) In the first position the black king is in checkmate
- 2) In the second position the black king is in stalemate
- 3) In the third position white can deliver checkmate in one move (and write down this move)!

Spot the Mistake

PUZZLE
OF THE
WEEK

Difficulty: Medium



This position contains a mistake – can you spot what it is?
Hint: why should it be impossible to reach this position if the correct rules are followed?

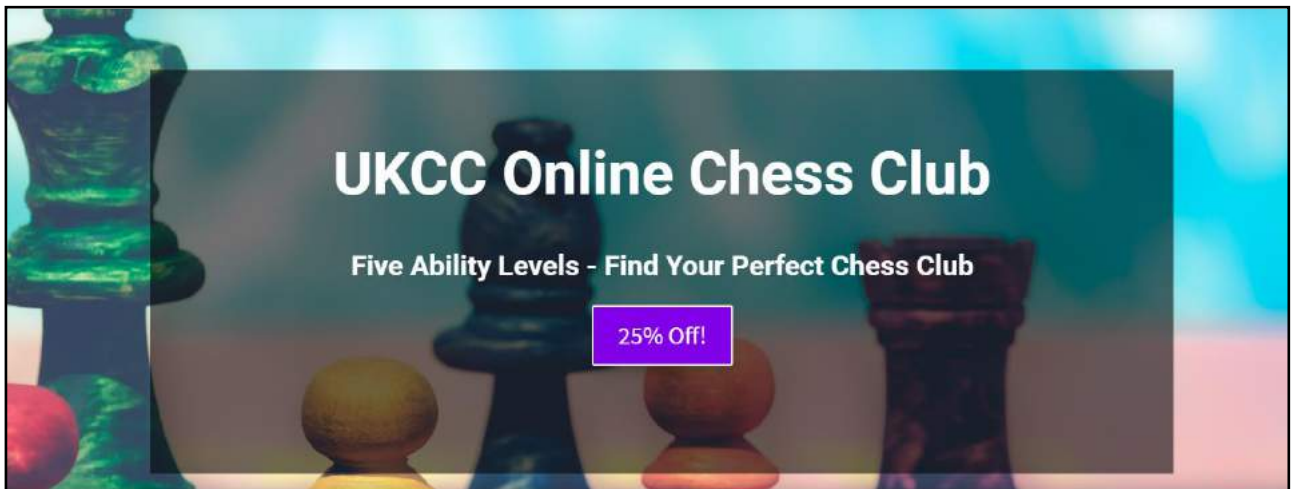
Submit your solution for a chance to win a prize!

Submit your answer via the form below:

<https://airtable.com/shrVsrBdsSWPRRDVK>

Correct answers will have a shot of winning a prize! Previous prizes include merchandise and invitations to master challenge matches

Take a look at...



Check out our weekly Zoom lessons with WFM Sarah Longson on our website using the link below! We run classes every weekday for each ability level as well as tournaments weekdays and weekends!

<https://www.delanceyukschoolschesschallenge.com/autumn-2020-club/>

If you enjoyed solving the tactics puzzles today you might enjoy WFM Sarah Longson and GM Danny King's Chessable course on **Endgames!**

You can find out more online or using the link below.

<https://www.chessable.com/tournament-ready-the-endgame/course/33413/>

Contact Us

Any questions, comments or ideas about anything chess related we'd love to hear from you!

Email: admin@ukchess.co.uk

Phone: 0161 485 1729

Facebook: <https://www.facebook.com/DelanceyUKSchoolsChessChallenge/>

