



DELANCEY
UK SCHOOLS
CHESS CHALLENGE

Activity Booklet
Saturday 28/11/2020



Introduction

The UKCC weekly activity booklet will be sent out every Saturday morning and contains chess puzzles and activities for a range of ability levels.

Players are encouraged to at least try and complete the page most relevant to their ability level (see table below). However you are welcome to tackle the entire booklet! At the end of the booklet there are some more general puzzles / activities for everyone to enjoy

Solutions

Solutions will be posted alongside the following weeks activity booklet and there will also be a video solution guide.

Please email us any feedback or ideas for future puzzles!

Ability Levels

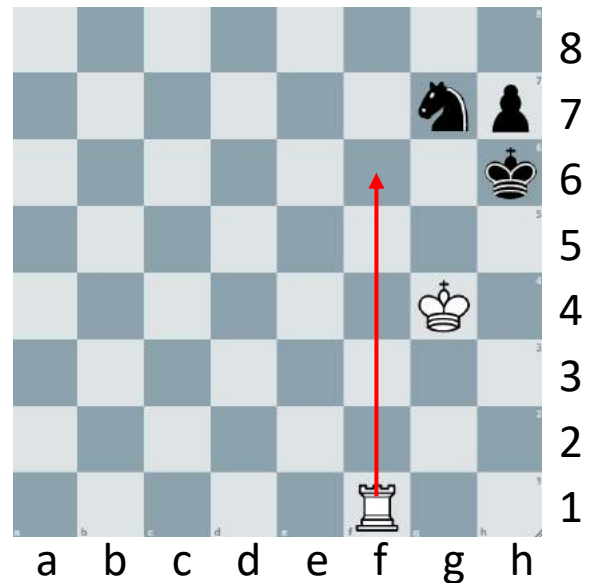
Club	Description	Approximate ECF Grade *
DECA – Club	Complete beginners and those with an incomplete grasp of the rules	Ungraded
MEGA – Club	Know the rules but little grasp of planning what to do beyond capturing and quick checkmates. Little to no tournament experience	0 – 59
GIGA – Club	Players with some tournament experience looking to “level up”	60 – 99
TERA – Club	More experienced players who have won or placed highly in local competitions	100 – 129
EXA - Club	Very experienced players with success at National Level events	130 – 159

Example

Below are examples of how you might write your solution to a puzzle presented in the booklet. Or you might prefer to just solve them in your head – completely up to you!

Q: Can you find checkmate in one for white?

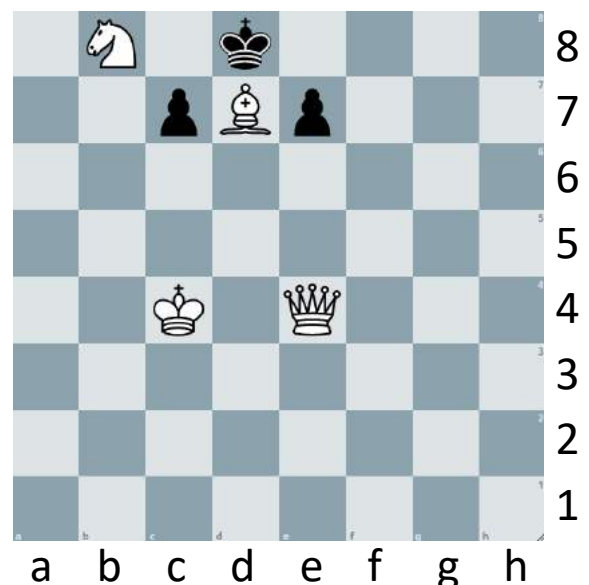
Here, because the solution is only one move, you might draw arrows on the board or you can use the lines below to answer – or both!



Rf6#
.....
.....

Q: Can you find checkmate in two for white?

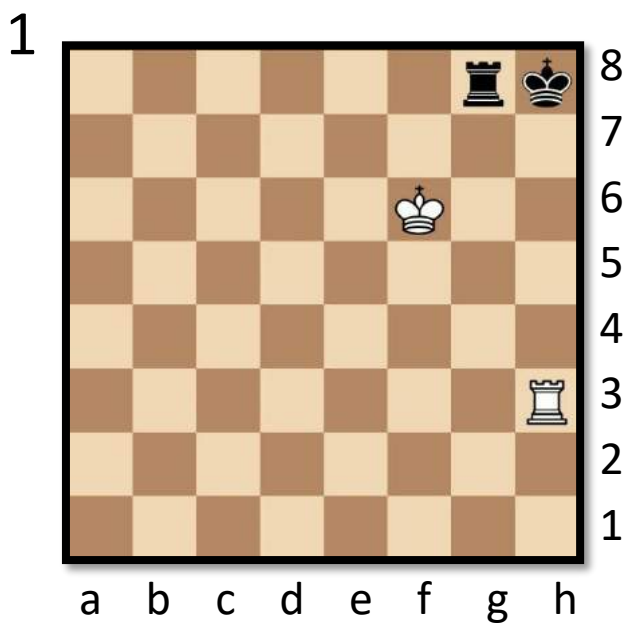
Here, the solution is a bit (OK a lot!) trickier and requires consideration of multiple variations. If you are familiar with coordinates, it is probably best that you write your answer out as shown.



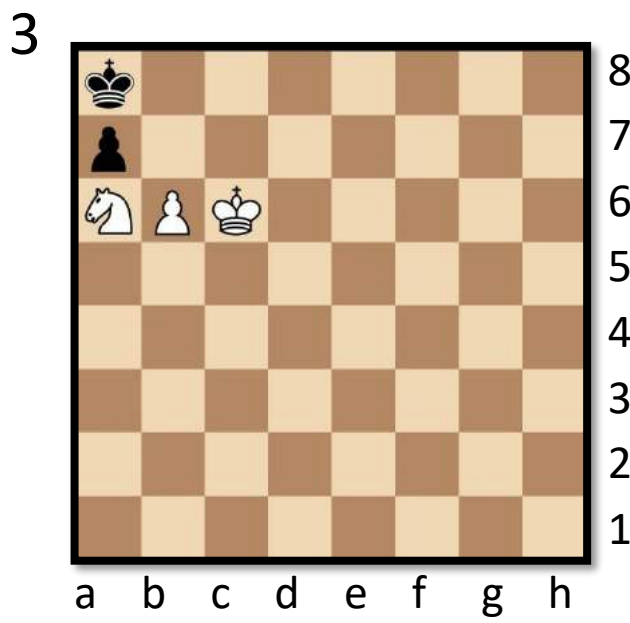
1.Qe1 e6 (1..c6 2.Qa5#) 2. Qh4#
.....
.....

Deca

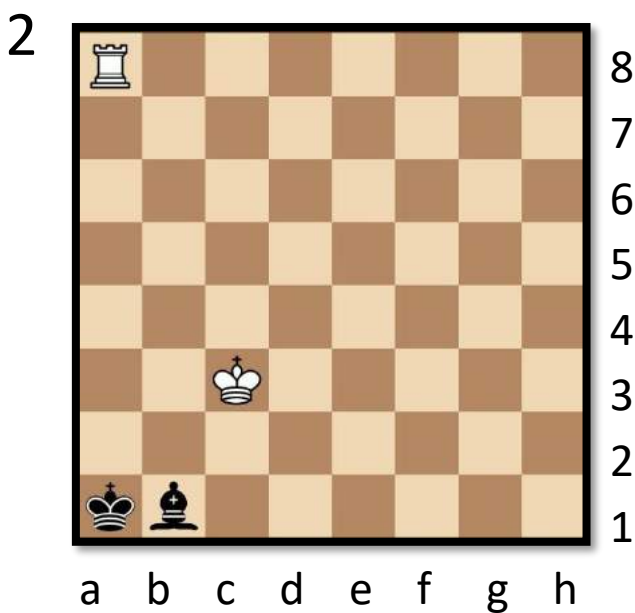
In these puzzles it is black to play. You have to determine whether it is checkmate, stalemate or neither!



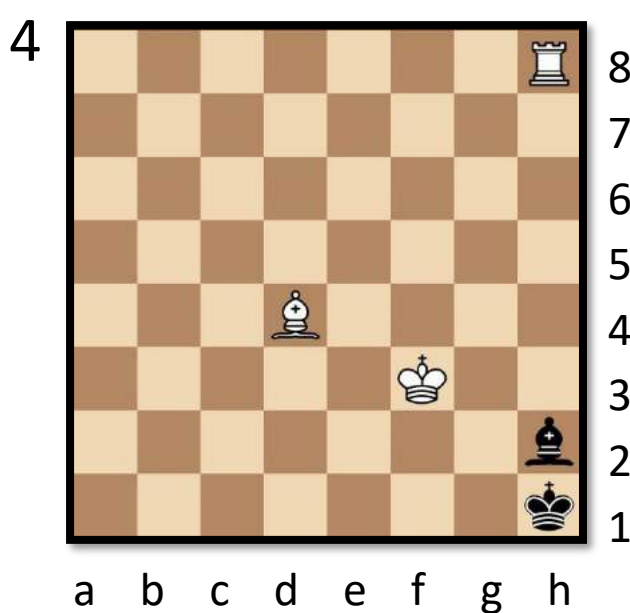
.....
.....



.....
.....



.....
.....

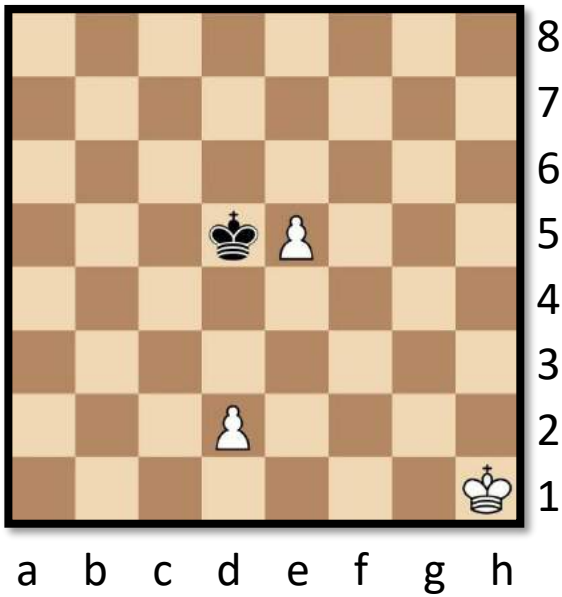


.....
.....

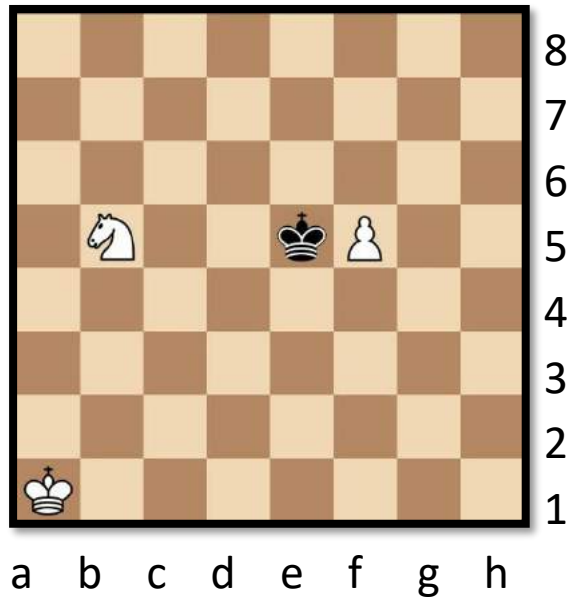
Mega

In each diagram it is white to move and win. White needs to keep at least 1 pawn on the board to win – so choose carefully!

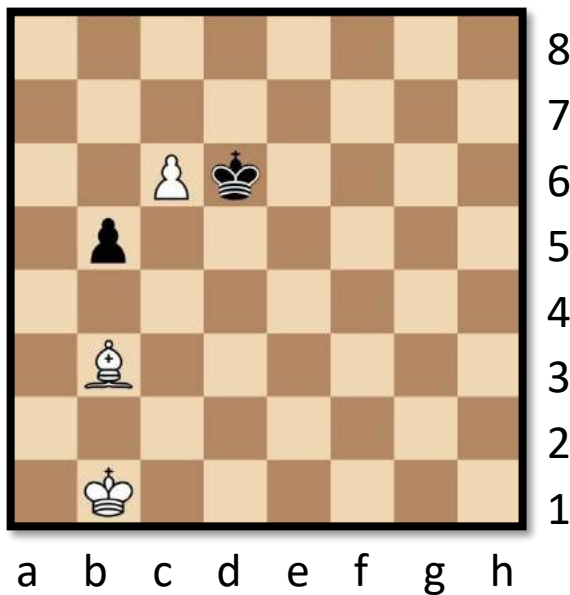
1



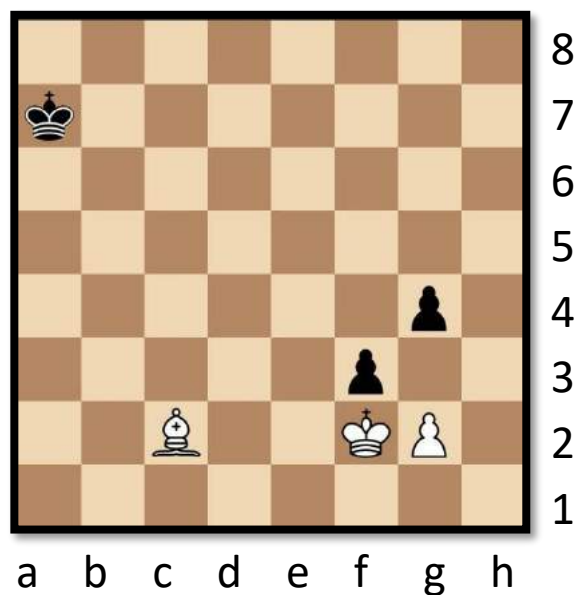
3



2

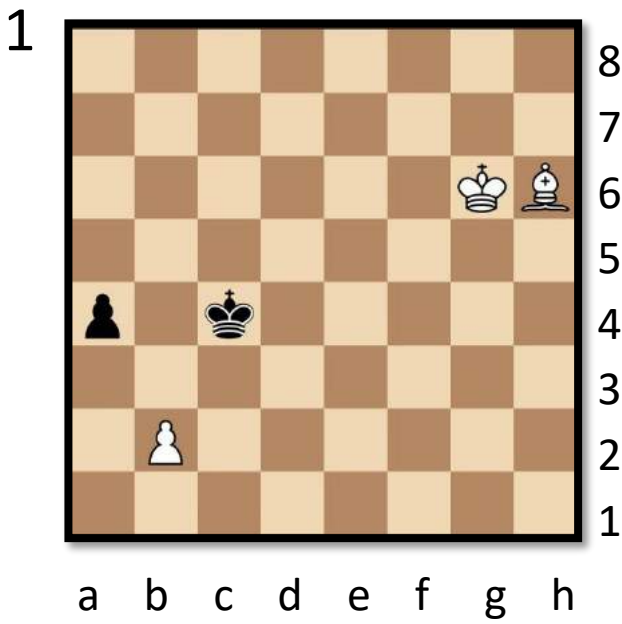


4

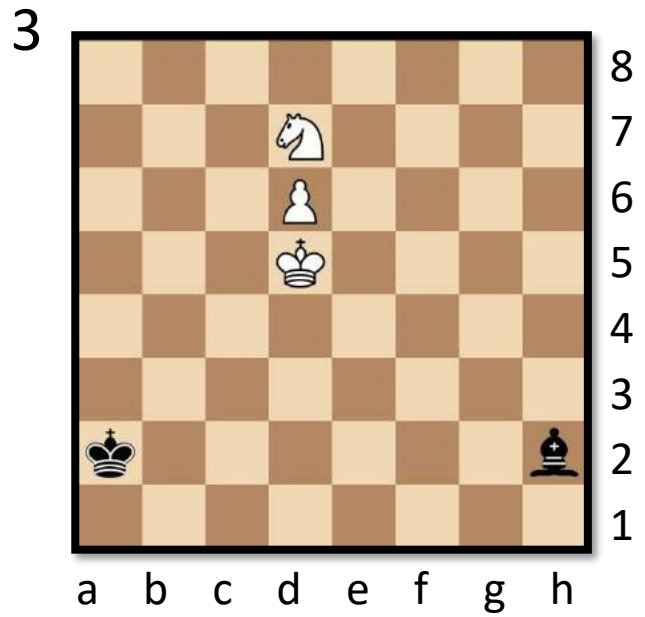


Giga

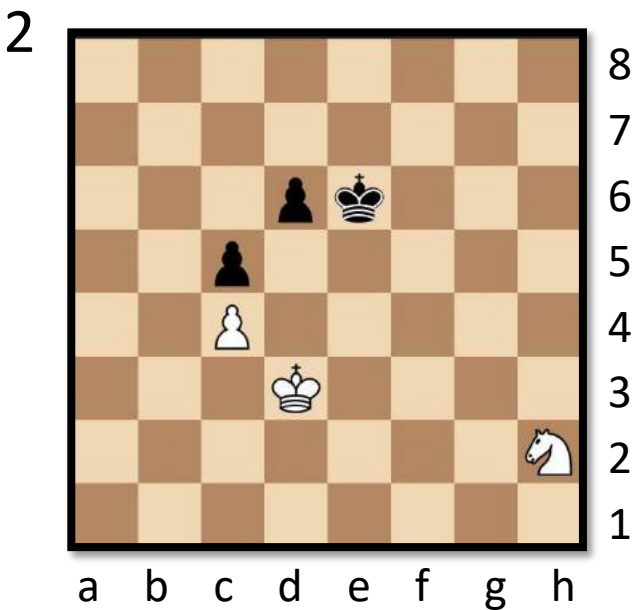
In each diagram it is white to move and win. White needs to keep at least 1 pawn on the board to win – so choose carefully!



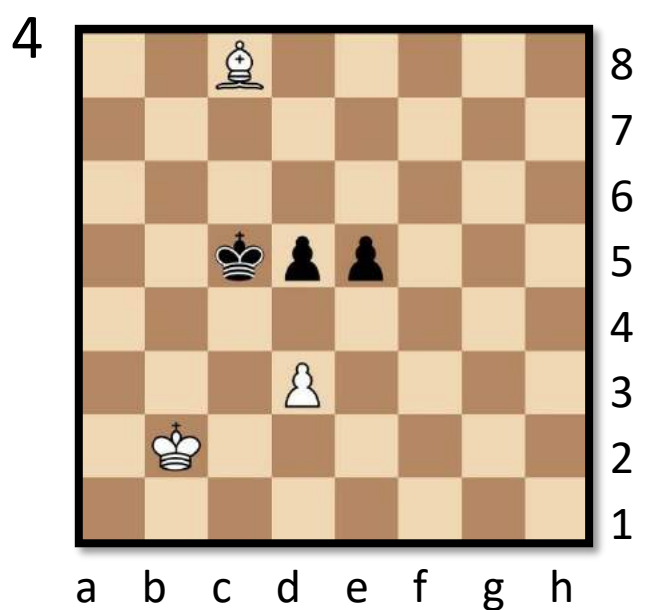
.....
.....



.....
.....



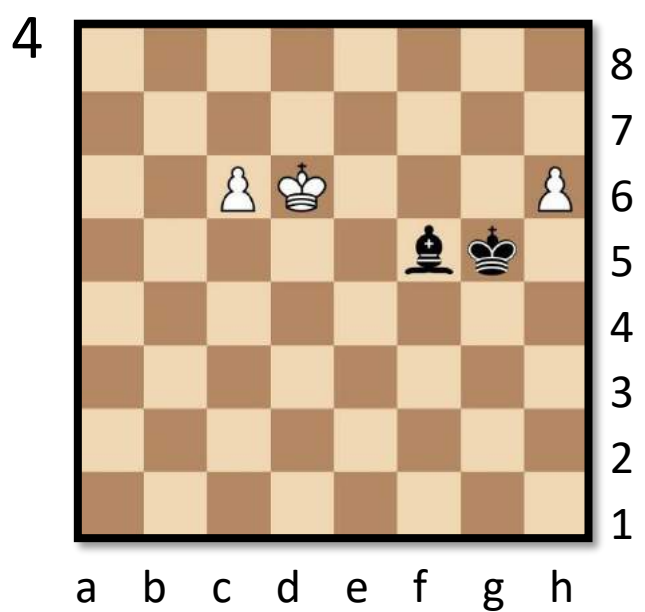
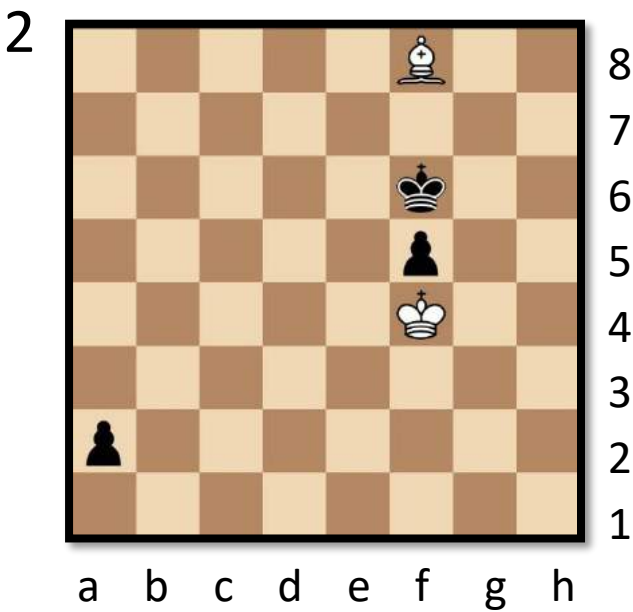
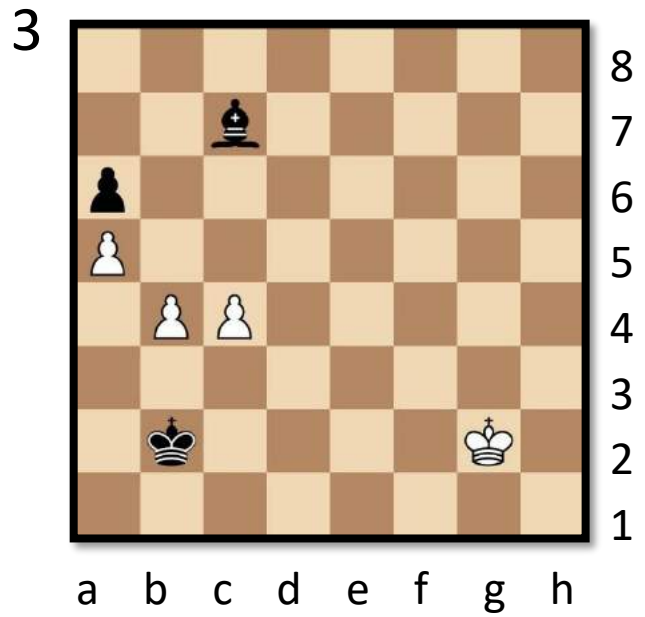
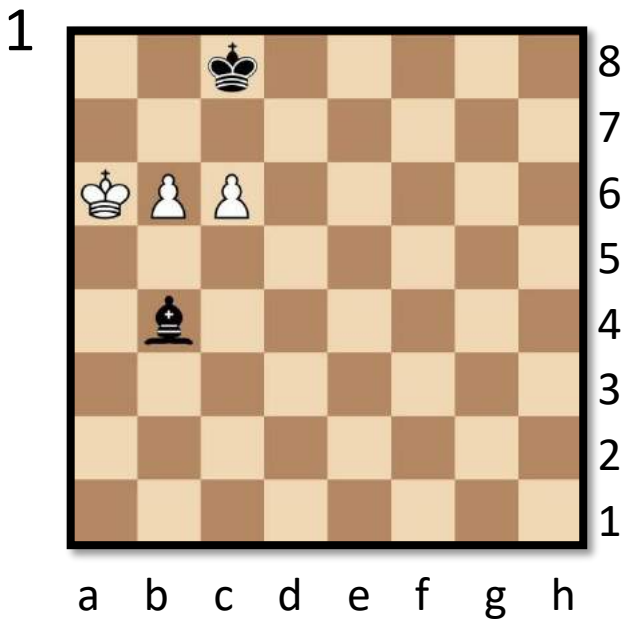
.....
.....



.....
.....

Tera

These positions are all examples of Bishop v Pawns. It is white to play and win in all positions except position 2 where you have to find the only way to draw the game.



Exa

More bishop v pawn examples. The first example is white to play and find a draw – the others white can win. Try and write down your full variations.

1

8
7
6
5
4
3
2
1

a b c d e f g h

.....
.....

3

8
7
6
5
4
3
2
1

a b c d e f g h

.....
.....

2

8
7
6
5
4
3
2
1

a b c d e f g h

.....
.....

4

8
7
6
5
4
3
2
1

a b c d e f g h

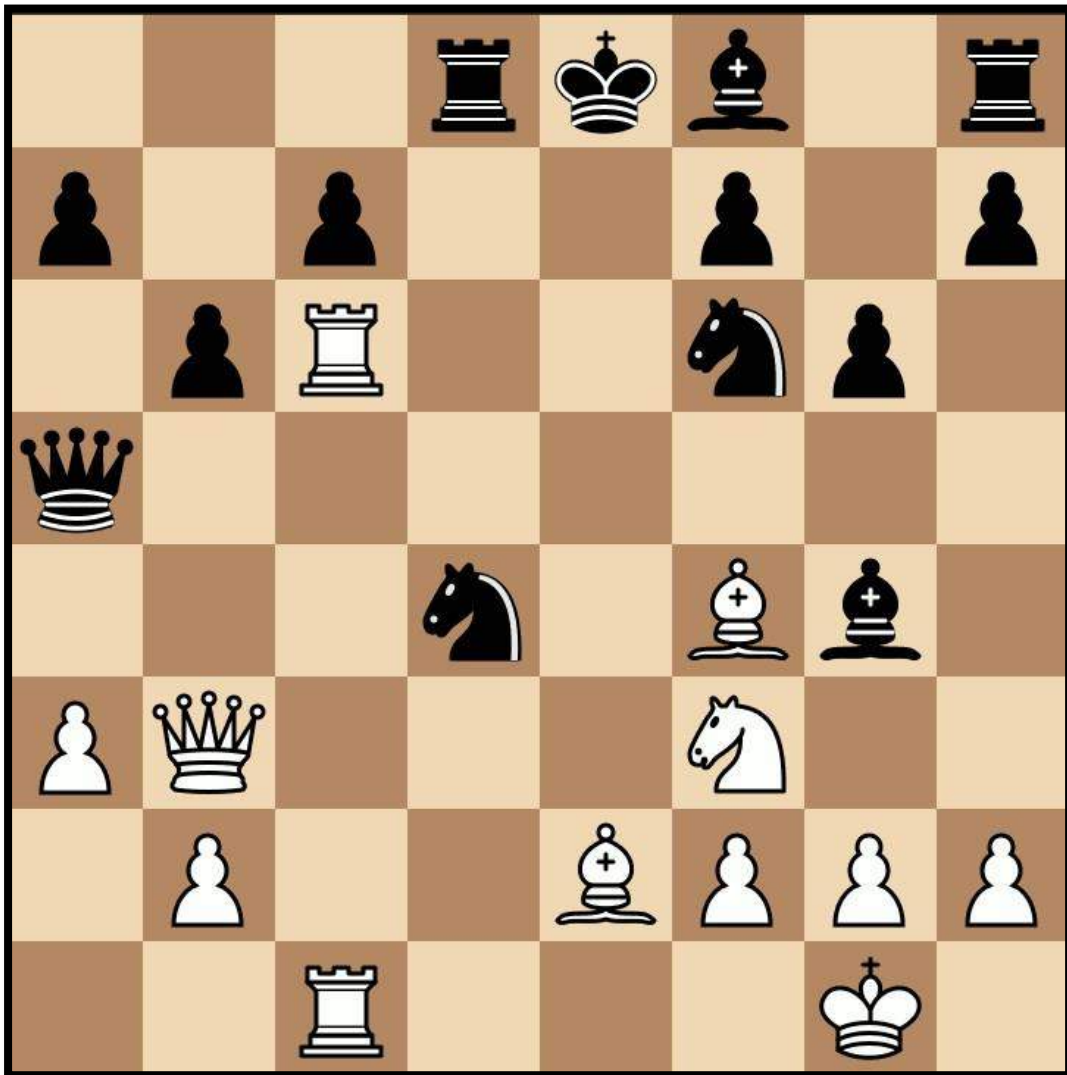
.....
.....

Fun Puzzles

Over the next couple of pages you will find some more casual ranging in difficulty from easy to difficult!



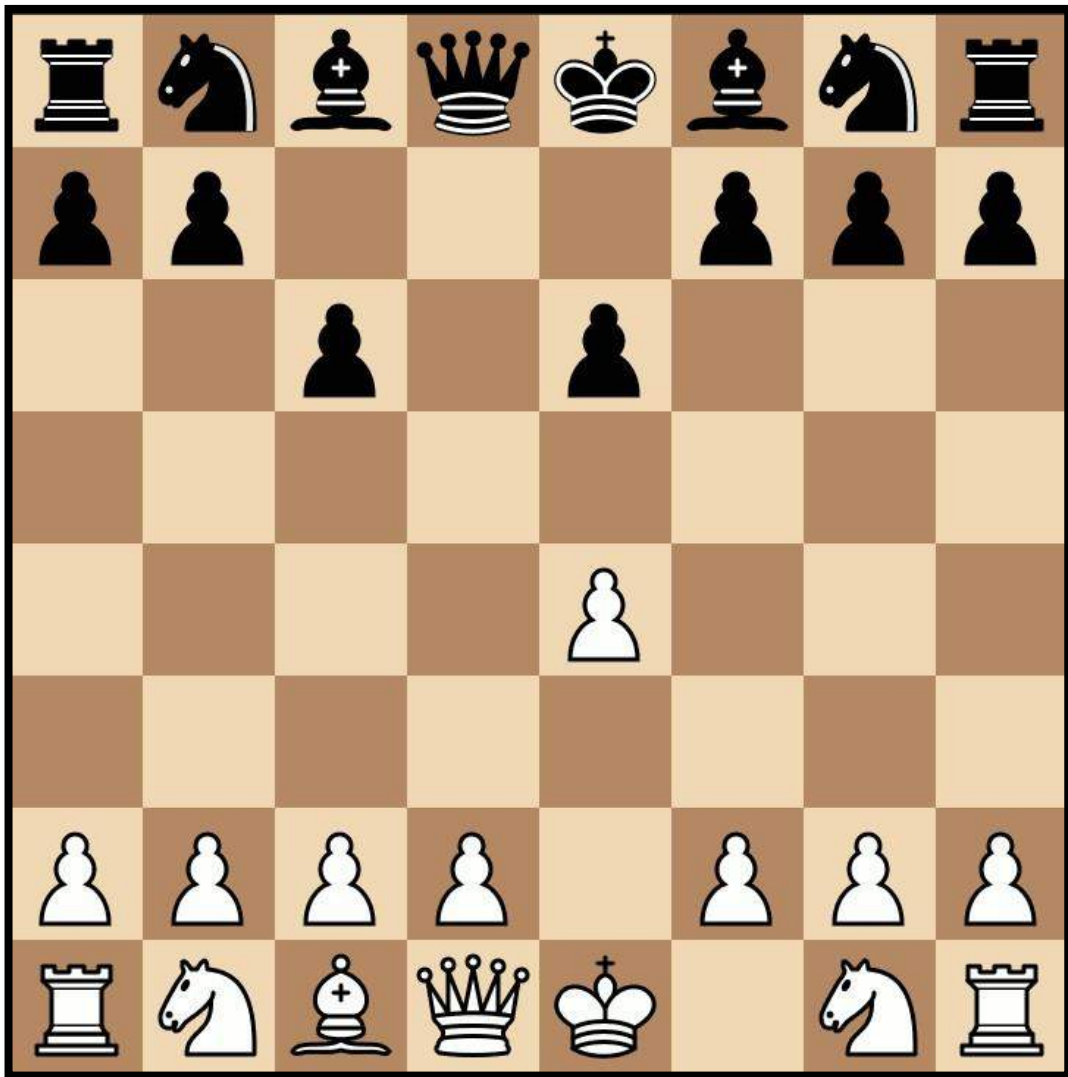
Swap Mate - Medium



In this puzzle we have to swap the positions of **ANY 2 PIECES** so that the black king is in checkmate. So for example the black pawn on a7 could be swapped with the white bishop on f4 (though that isn't the correct answer)! The resulting position must be a legal one and one that could be arrived at by legal moves.

Retrograde Puzzle

Difficulty: Hard



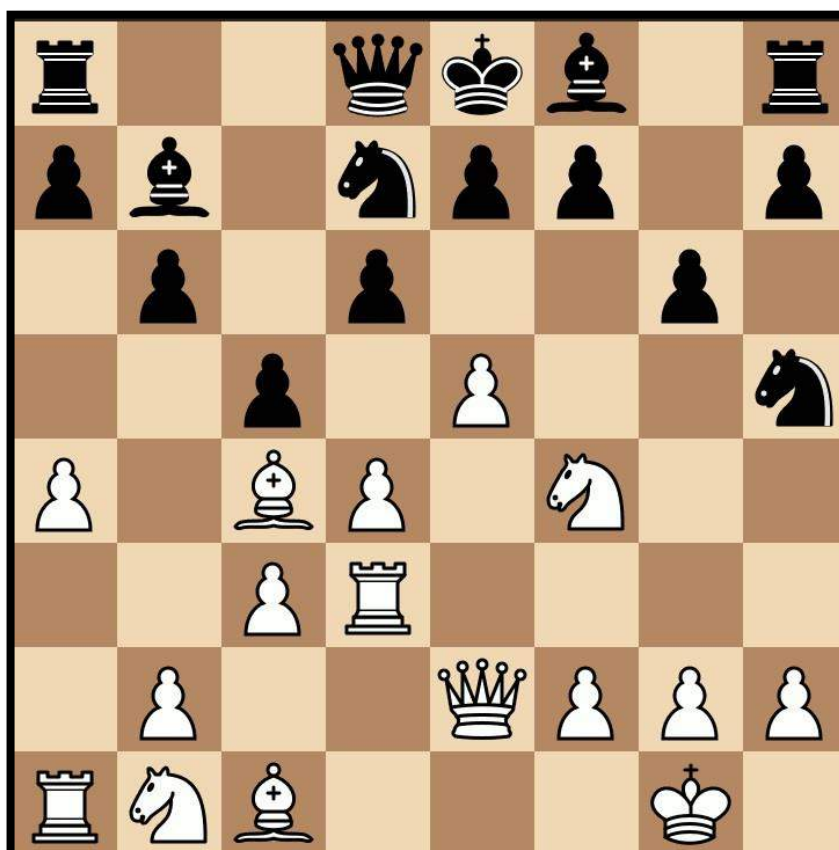
How is it possible to reach the above position **after black's 4th move?**

The moves do not have to be sensible but they do have to be legal – and it has to be precisely after black's 4th move!

Fantasy Mate in 2

PUZZLE
OF THE
WEEK

Difficulty: Easier



In this position white is given **2 moves in a row** to checkmate the black King (the first move cannot be a check). So make your two moves – black doesn't get to reply!

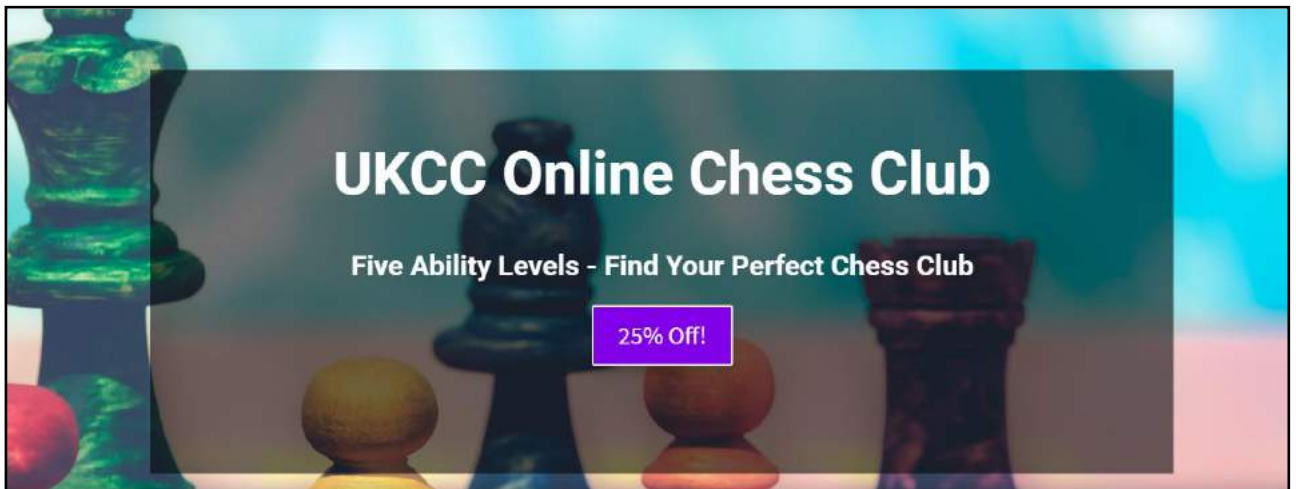
Submit your solution for a chance to win a prize!

Submit your answer via the form below:

<https://airtable.com/shrVsrBdsSWPRRDVK>

Correct answers will have a shot of winning a prize! Previous prizes include merchandise and invitations to master challenge matches

Take a look at...



Check out our weekly Zoom lessons with WFM Sarah Longson on our website using the link below! We run classes every weekday for each ability level as well as tournaments weekdays and weekends!

<https://www.delanceyukschoolschesschallenge.com/autumn-2020-club/>

If you enjoyed solving the tactics puzzles today you might enjoy WFM Sarah Longson and GM Danny King's Chessable course on **Endgames!**

You can find out more online or using the link below.

<https://www.chessable.com/tournament-ready-the-endgame/course/33413/>

Contact Us

Any questions, comments or ideas about anything chess related we'd love to hear from you!

Email: admin@ukchess.co.uk

Phone: 0161 485 1729

Facebook: <https://www.facebook.com/DelanceyUKSchoolsChessChallenge/>

