



DELANCEY
UK SCHOOLS
CHESS CHALLENGE

Activity Booklet
Saturday 09/01/2021



Introduction

The UKCC weekly activity booklet will be sent out every Saturday morning and contains chess puzzles and activities for a range of ability levels.

Players are encouraged to at least try and complete the page most relevant to their ability level (see table below). However you are welcome to tackle the entire booklet! At the end of the booklet there are some more general puzzles / activities for everyone to enjoy

Solutions

Solutions will be posted alongside the following weeks activity booklet and there will also be a video solution guide.

Please email us any feedback or ideas for future puzzles!

Ability Levels

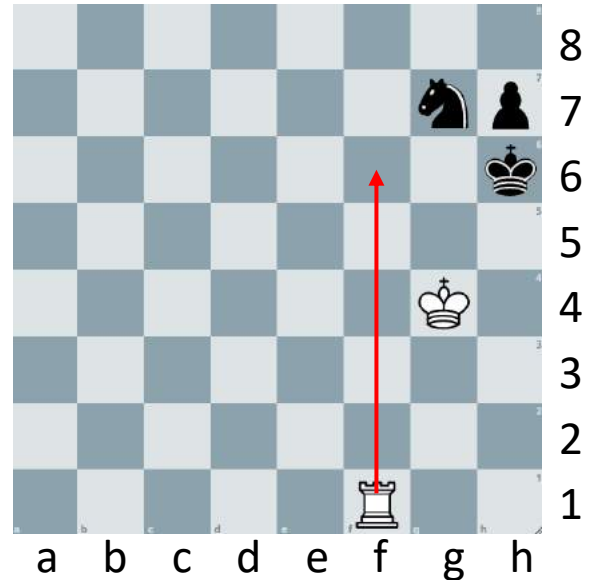
Club	Description	Approximate ECF Grade *
DECA – Club	Complete beginners and those with an incomplete grasp of the rules	Ungraded
MEGA – Club	Know the rules but little grasp of planning what to do beyond capturing and quick checkmates. Little to no tournament experience	0 – 59
GIGA – Club	Players with some tournament experience looking to “level up”	60 – 99
TERA – Club	More experienced players who have won or placed highly in local competitions	100 – 129
EXA - Club	Very experienced players with success at National Level events	130 – 159

Example

Below are examples of how you might write your solution to a puzzle presented in the booklet. Or you might prefer to just solve them in your head – completely up to you!

Q: Can you find checkmate in one for white?

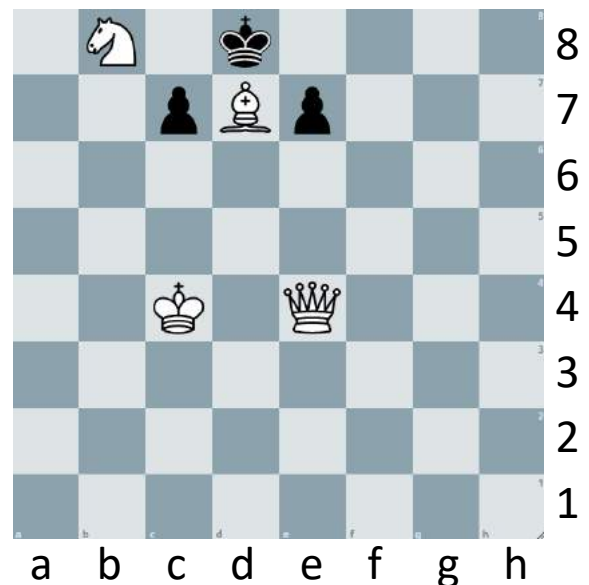
Here, because the solution is only one move, you might draw arrows on the board or you can use the lines below to answer – or both!



Rf6#
.....
.....

Q: Can you find checkmate in two for white?

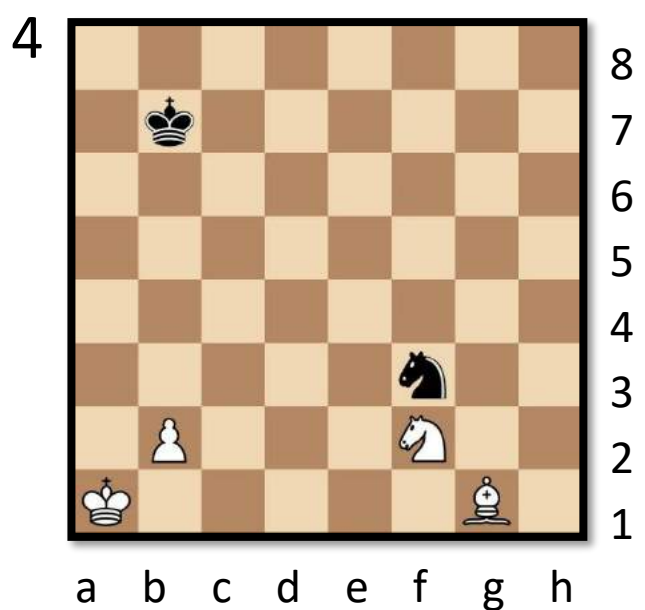
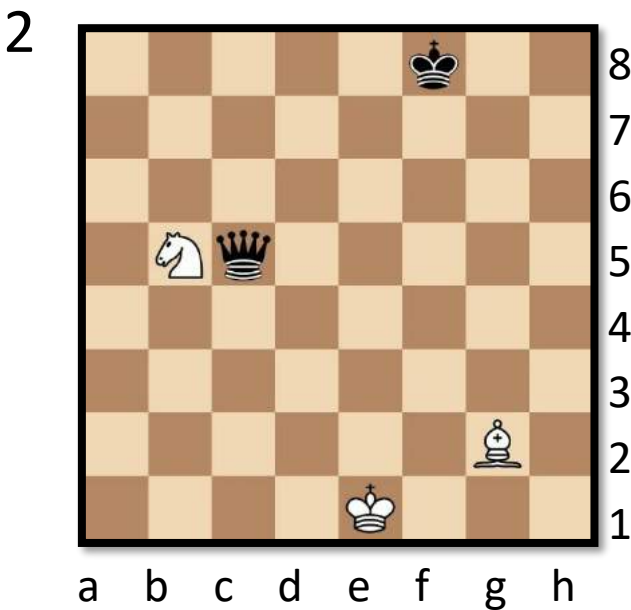
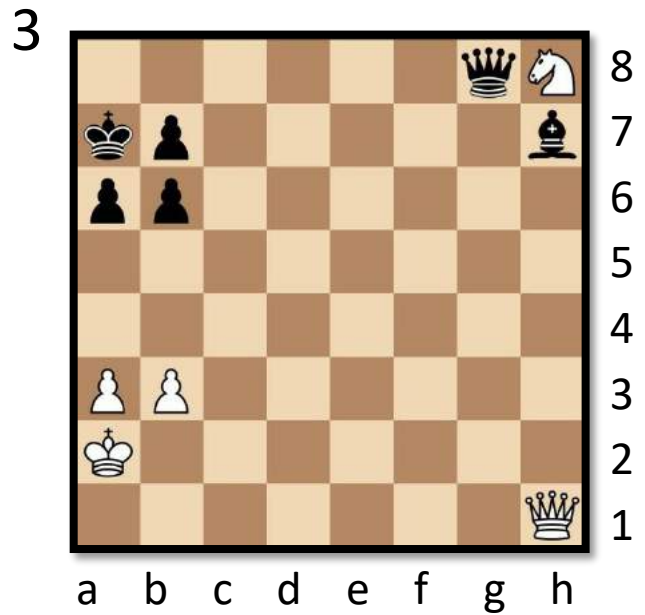
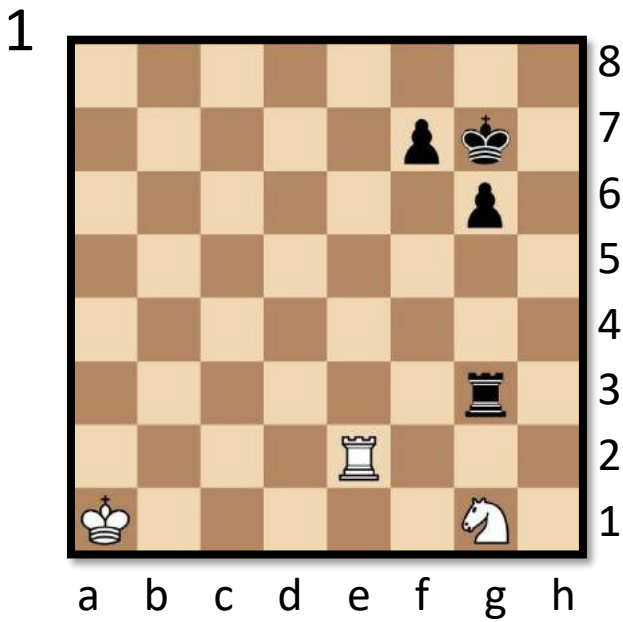
Here, the solution is a bit (OK a lot!) trickier and requires consideration of multiple variations. If you are familiar with coordinates, it is probably best that you write your answer out as shown.



1.Qe1 e6 (1..c6 2.Qa5#) 2. Qh4#
.....
.....

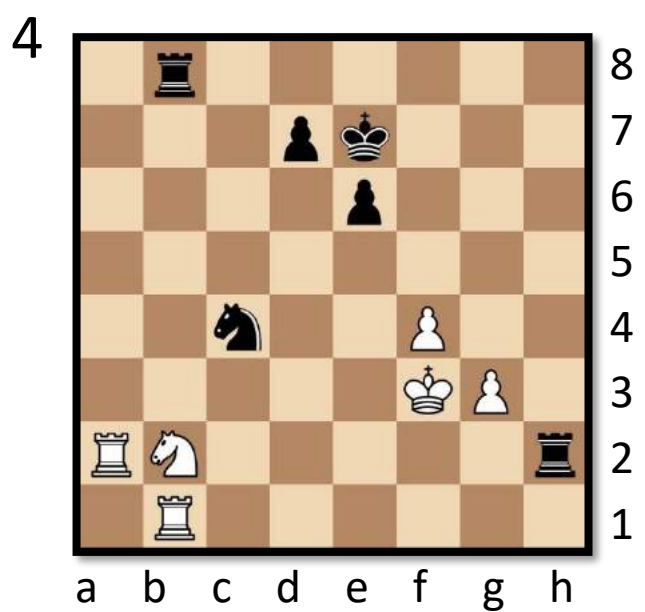
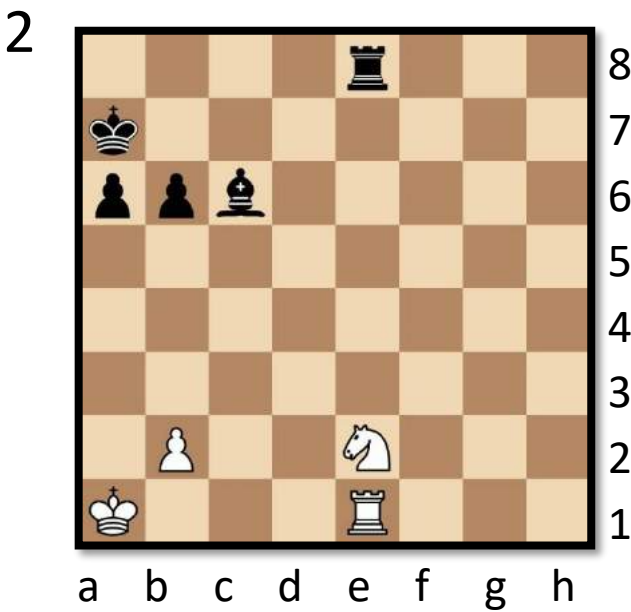
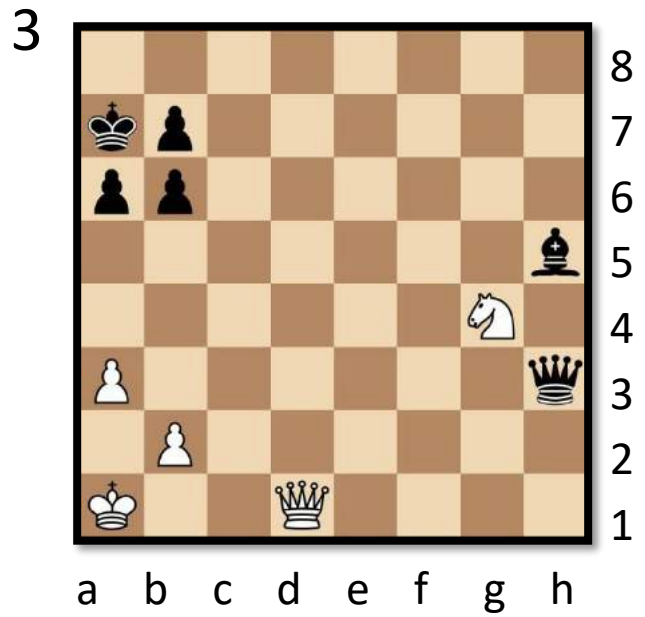
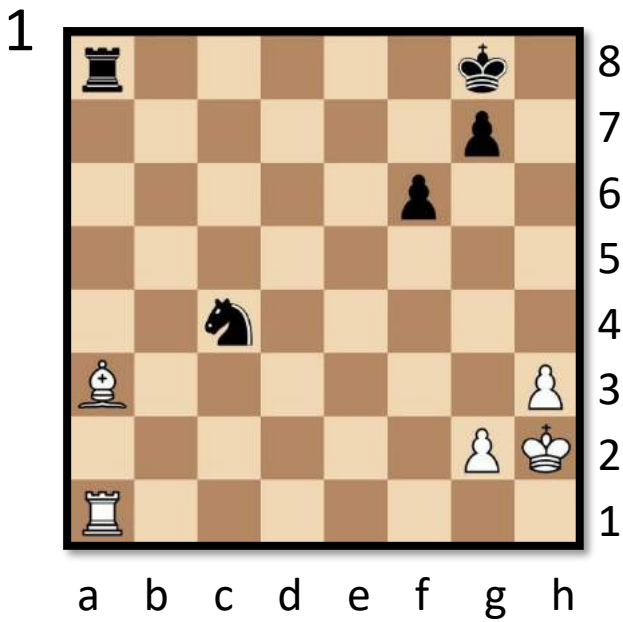
Deca

In the positions below a white piece is attacked. You need to find a way to defend so that you don't lose material. Remember it is often a good idea to defend a weaker piece with a stronger one.



Mega

In each diagram white is either in a pin. Find the defensive move to avoid loss of material. Sometimes the best form of defence is to counter-attack...



Giga

In each diagram it is white to move. Try and find the best move and write down your key variation. Sometimes the moves are defensive in nature.

1

a b c d e f g h

.....
.....

3

a b c d e f g h

.....
.....

2

a b c d e f g h

.....
.....

4

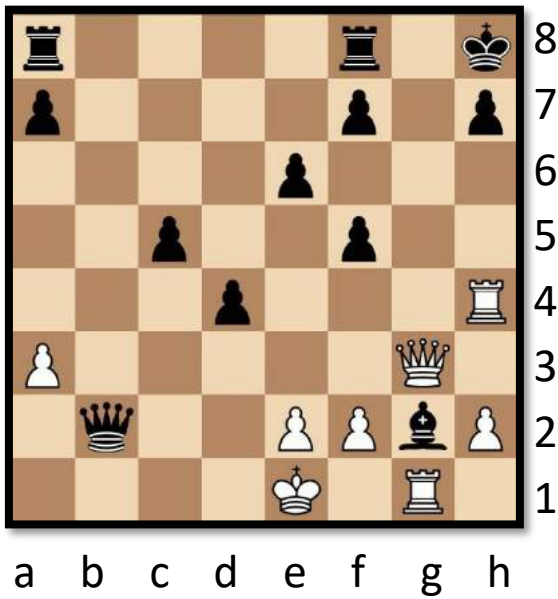
a b c d e f g h

.....
.....

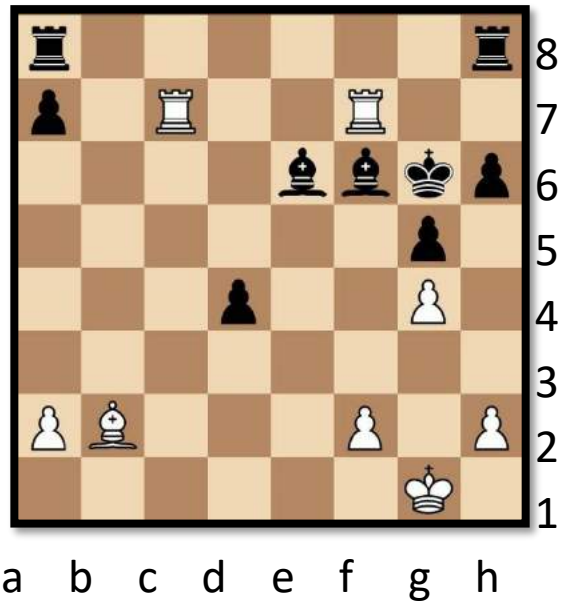
Tera

In each diagram it is white to play and checkmate in three moves. Write down the main variation.

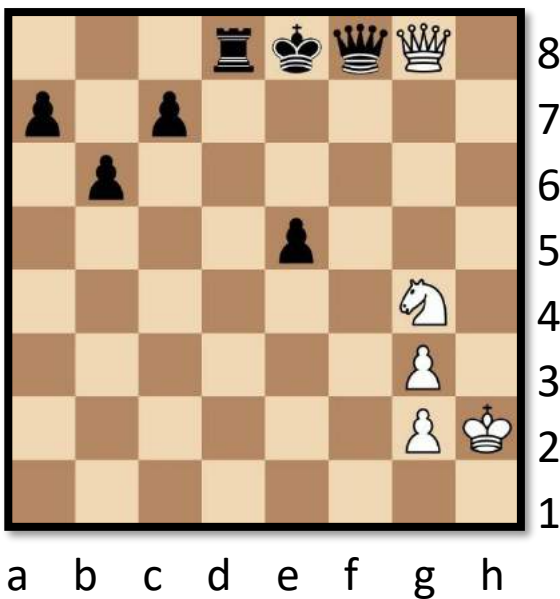
1



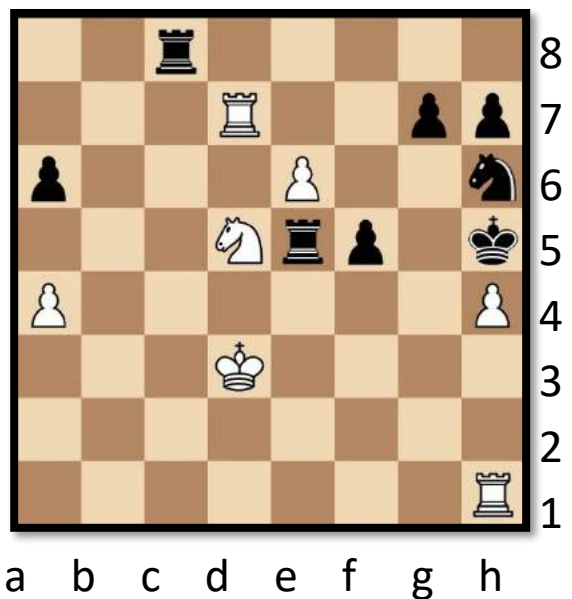
3



2

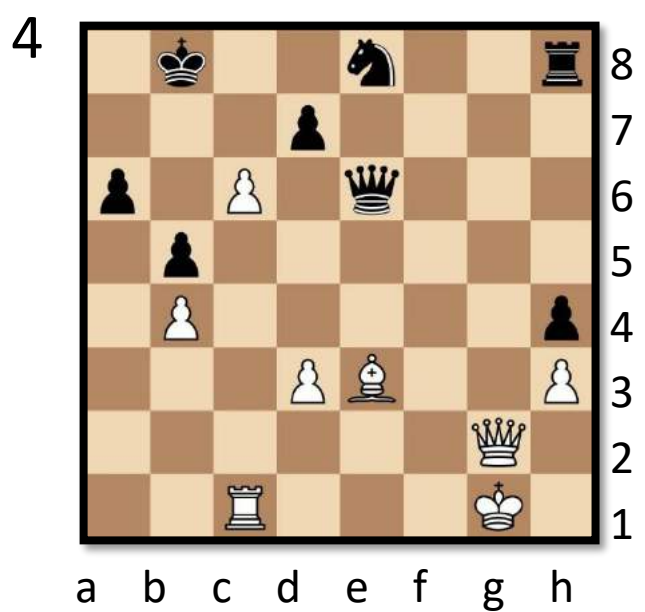
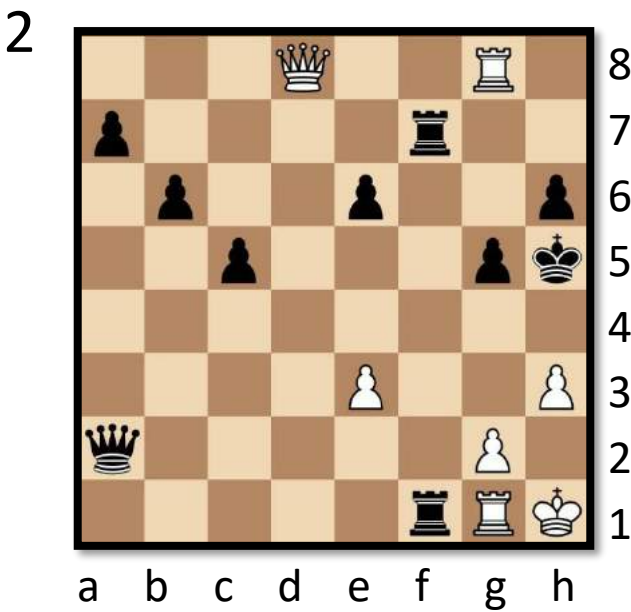
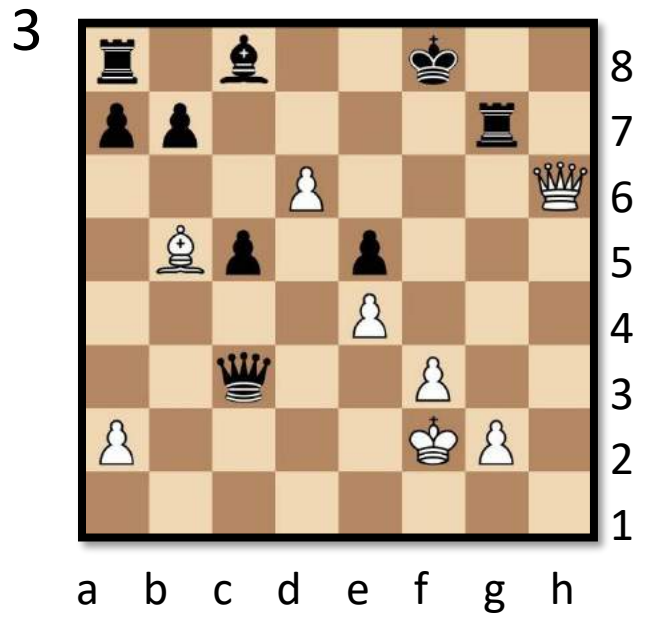
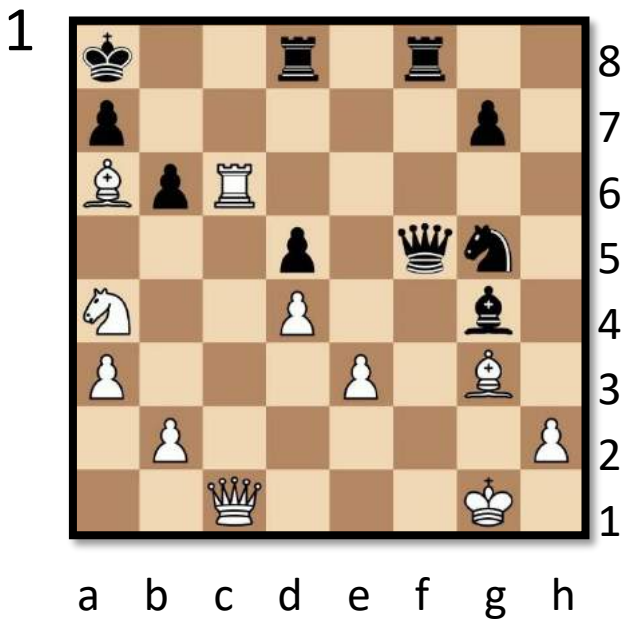


4



Exa

In each diagram it is white to move and checkmate in four moves. Write down the main variation.

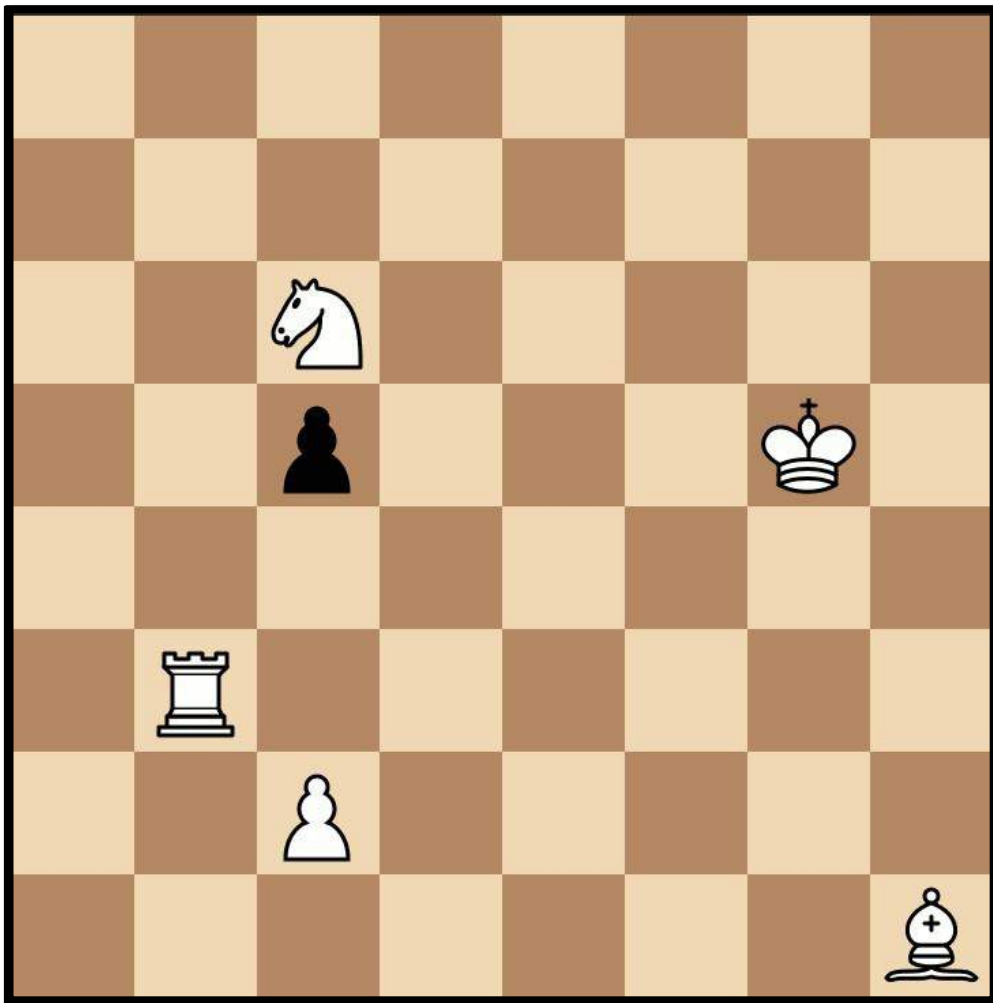


Fun Puzzles

Over the next couple of pages you will find some more casual puzzles with a range of difficulty levels!



Triple Loyd - Easier

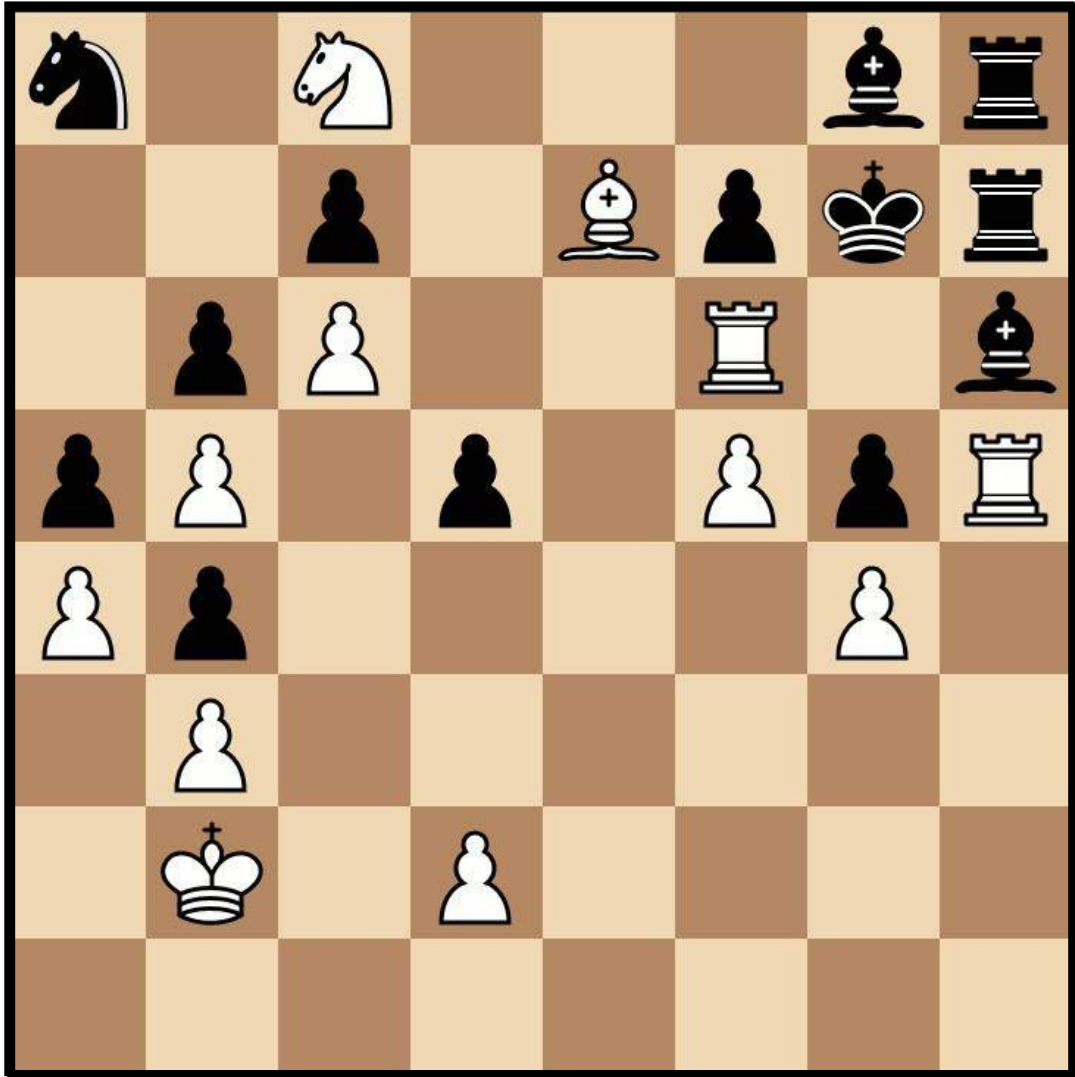


In a “Triple Loyd” puzzle you will notice the black king is missing from the board. You have to place the black king in 3 different positions (though sometimes the same square may be used twice)!

- 1) In the first position the black king is in checkmate
- 2) In the second position the black king is in stalemate
- 3) In the third position white can deliver checkmate in one move (and write down this move)!

Mate in Six

Difficulty: Fiendish !!



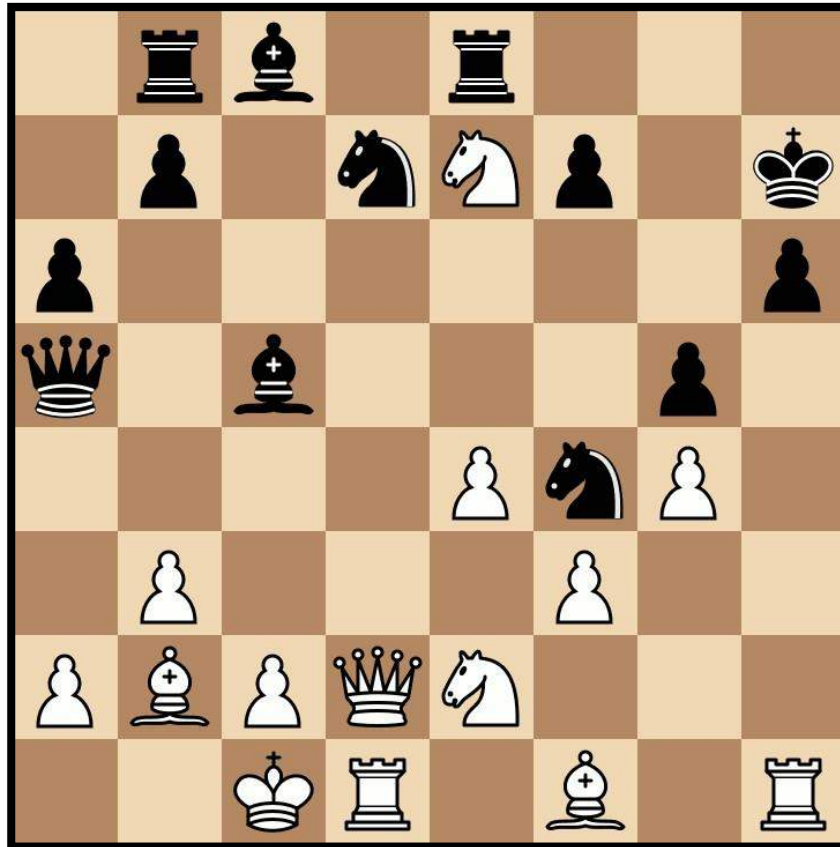
White to play and checkmate black in six moves (that is 6 moves for white).

This puzzle is extremely difficult and so we have left a rather large hint at the bottom of the final page. If you solve this without help please get in touch as even we needed a hint with this one...!

Swap Mate

PUZZLE
OF THE
WEEK

Difficulty: Medium



Swap any two pieces around so that the black king is in checkmate.

It can be any 2 pieces (for instance the black rook on b8 for the white knight on e7. The resulting position must be legal (no pawns on 1st or 8th ranks) and it must be possible to reach that position by normal means.

Submit your solution for a chance to win a prize!

Submit your answer via the form below:

<https://airtable.com/shrVsrBdsSWPRRDVK>

Correct answers will have a shot of winning a prize! Previous prizes include merchandise and invitations to master challenge matches

Take a look at...



Spring Club

Online Spring Chess Clubs

From January 2021 the UK Chess Challenge are continuing CLUB – a family membership where players get access to weekly online competitions and lessons which are banded into five ability levels. There are three membership types so you can choose the features and budget that is right for you. The start date is the 11th January.

We are passionate about giving children the opportunity to “Learn, Practice and Play” and our clubs have all three of these elements in abundance mixed in of course with that vital ingredient – fun!



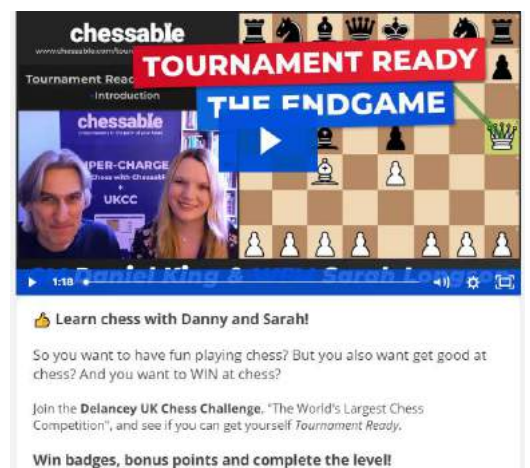
Check out our weekly Zoom lessons with WFM Sarah Longson on our website using the link below! We run classes every weekday for each ability level as well as tournaments weekdays and weekends!

<https://www.delanceyukschoolschesschallenge.com/spring-term>

If you enjoyed solving the tactics puzzles today you might enjoy WFM Sarah Longson and GM Danny King’s Chessable course on **Endgames!**

You can find out more online or using the link below.

<https://www.chessable.com/tournament-ready-the-endgame/course/33413/>



chessable
www.chessable.com/learn

TOURNAMENT READY

Tournament Ready Introduction

THE ENDGAME

PER-CHARGE
Chess with Chessable
UKCC

Learn chess with Danny and Sarah!

So you want to have fun playing chess? But you also want get good at chess? And you want to WIN at chess?

Join the **Delancey UK Chess Challenge**. "The World's Largest Chess Competition", and see if you can get yourself *Tournament Ready*.

Win badges, bonus points and complete the level!

Contact Us

Any questions, comments or ideas about anything chess related we’d love to hear from you!

Email: admin@ukchess.co.uk

Phone: 0161 485 1729

Facebook: <https://www.facebook.com/DelanceyUKSchoolsChessChallenge/>

Hint to mate in 6: The first move is 1.Rh1 and the last move is 6.Ba3-b2 checkmate...